

STATE OF ILLINOIS
DEPARTMENT OF TRANSPORTATION

ROUTE NO.	SECTION	COUNTY	TOTAL SHEETS	SHEET	SHEET NO. 8
		Will	16	12	11 SHEETS
FED. ROAD DIST. NO. 7	ILLINOIS	FED. AID PROJECT			

Contract: 62861

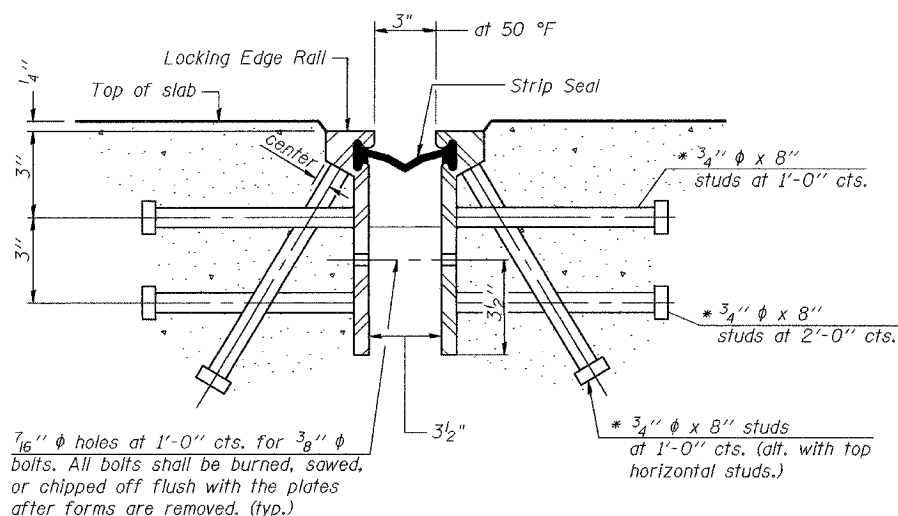
GENERAL NOTES

The strip seal shall be made continuous and shall have a minimum thickness of 1/4". The configuration of the strip seal shall match the configuration of the Locking Edge Rails.

The height and thickness of the Locking Edge Rails shown are minimum dimensions. The actual configuration of the Locking Edge Rails and matching strip seal may vary from manufacturer to manufacturer. Flanged edge rails will not be allowed.

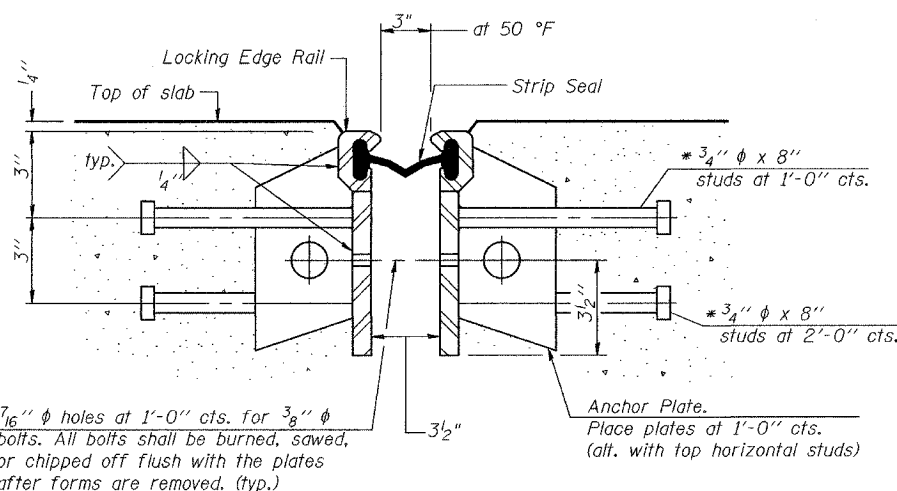
Locking Edge Rails may be spliced at slope discontinuities and stage construction joints.

The manufacturer's recommended installation methods shall be followed.



SECTION THRU ROLLED RAIL EXP. JOINT

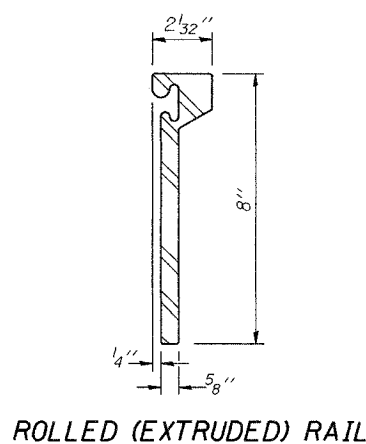
(170 Studs Required)
(76 Stage I, 94 Stage II)



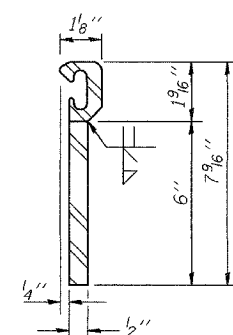
SECTION THRU WELDED RAIL EXP. JOINT

(106 Studs Required)
(48 Stage I, 58 Stage II)
(64 Anchor Plates Required)
(28 Stage I, 36 Stage II)

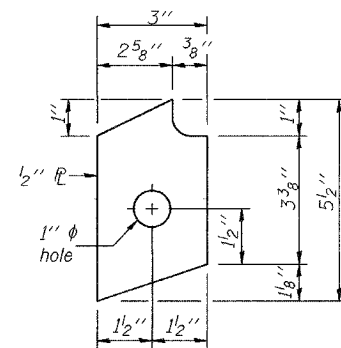
* Granular or solid flux filled headed studs conforming to Article 1006.32 of the Std. Specs., automatically end welded.



ROLLED (EXTRUDED) RAIL

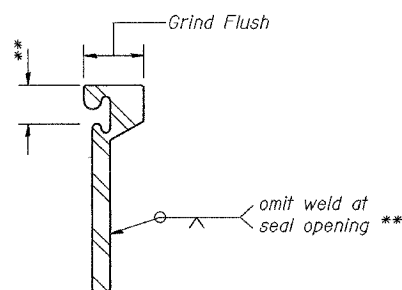


WELDED RAIL



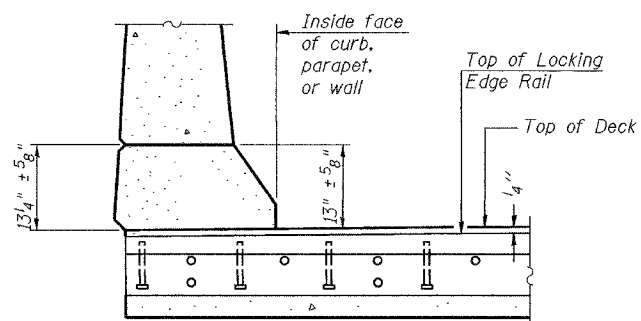
ANCHOR PL
(for welded rail)

LOCKING EDGE RAILS



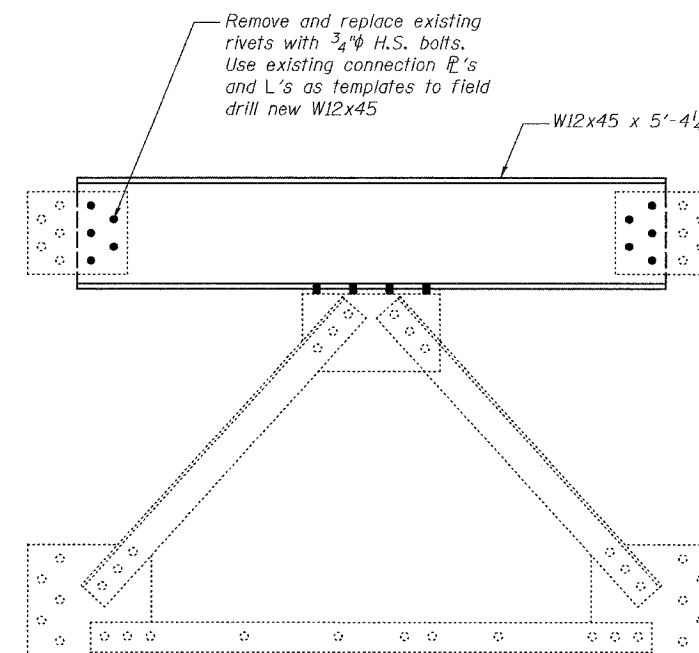
LOCKING EDGE RAIL SPLICE

The inside of the locking edge rail groove shall be free of weld residue.



AT PARAPET

TYPICAL END TREATMENTS



CROSS FRAME REPAIR DETAIL

Repair (5)
(3 Locations Required)
Between Girders 1 and 2 in Span 3 at Pier 3
and Between Girders 4 and 5, and Girders 5 and 6
in Span 7 at Pier 6

**PIER 6 STRIP SEAL AND
CROSS-FRAME REPAIR DETAILS
JOINT DETAILS**

F.A.I. RT.55
WILL COUNTY
SN 099-0008

DESIGNED	A.T.H.
CHECKED	J.S.B.
DRAWN	Drew Christopher
CHECKED	J.S.B. A.T.H.

January 24, 2005
EXAMINED *John A. Morris*
ENGINEER OF STRUCTURAL SERVICES
PASSED *Ralph E. Anderson*
ENGINEER OF BRIDGES AND STRUCTURES