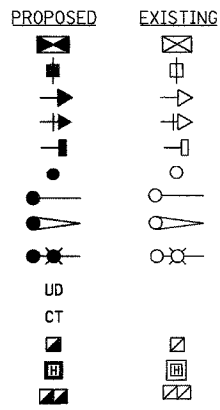
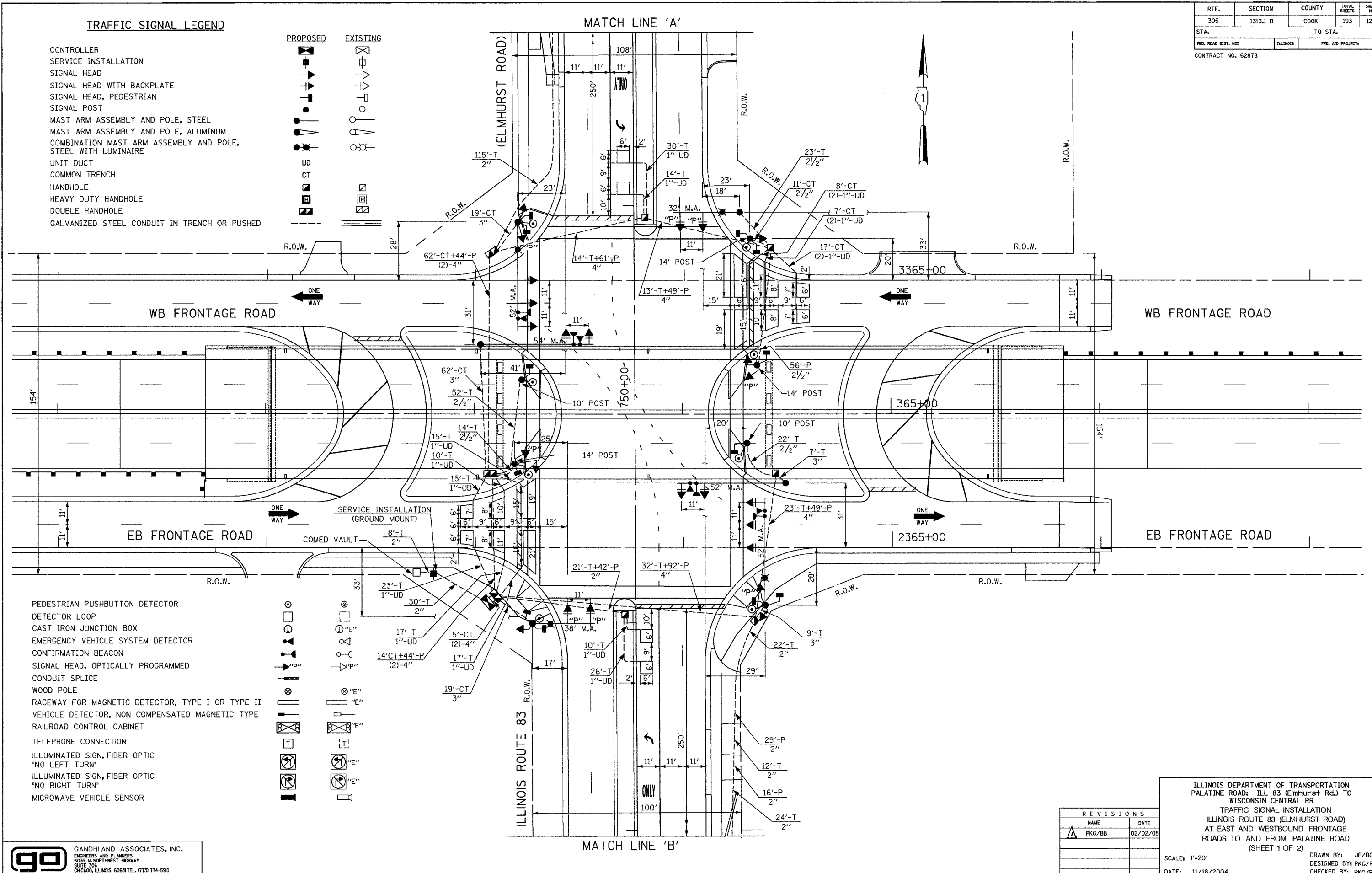


TRAFFIC SIGNAL LEGEND

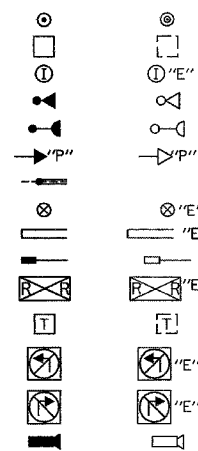
- CONTROLLER
 SERVICE INSTALLATION
 SIGNAL HEAD
 SIGNAL HEAD WITH BACKPLATE
 SIGNAL HEAD, PEDESTRIAN
 SIGNAL POST
 MAST ARM ASSEMBLY AND POLE, STEEL
 MAST ARM ASSEMBLY AND POLE, ALUMINUM
 COMBINATION MAST ARM ASSEMBLY AND POLE, STEEL WITH LUMINAIRE
 UNIT DUCT
 COMMON TRENCH
 HANDHOLE
 HEAVY DUTY HANDHOLE
 DOUBLE HANDHOLE
 GALVANIZED STEEL CONDUIT IN TRENCH OR PUSHED



RTE.	SECTION	COUNTY	TOTAL SHEETS	SHEET NO
305	1313.1 B	COOK	193	122
STA.		TO STA.		
FED. ROAD DIST. NO.		ILLINOIS	FED. AID PROJECT	
CONTRACT NO. 62878				



- PEDESTRIAN PUSHBUTTON DETECTOR
 DETECTOR LOOP
 CAST IRON JUNCTION BOX
 EMERGENCY VEHICLE SYSTEM DETECTOR
 CONFIRMATION BEACON
 SIGNAL HEAD, OPTICALLY PROGRAMMED
 CONDUIT SPLICE
 WOOD POLE
 RACEWAY FOR MAGNETIC DETECTOR, TYPE I OR TYPE II
 VEHICLE DETECTOR, NON COMPENSATED MAGNETIC TYPE
 RAILROAD CONTROL CABINET
 TELEPHONE CONNECTION
 ILLUMINATED SIGN, FIBER OPTIC
 "NO LEFT TURN"
 ILLUMINATED SIGN, FIBER OPTIC
 "NO RIGHT TURN"
 MICROWAVE VEHICLE SENSOR



REVISIONS	
NAME	DATE
PKG/BB	02/02/05

ILLINOIS DEPARTMENT OF TRANSPORTATION
 PALATINE ROAD: ILL 83 (Elmhurst Rd.) TO
 WISCONSIN CENTRAL RR
 TRAFFIC SIGNAL INSTALLATION
 ILLINOIS ROUTE 83 (ELMHURST ROAD)
 AT EAST AND WESTBOUND FRONTAGE
 ROADS TO AND FROM PALATINE ROAD
 (SHEET 1 OF 2)

SCALE: 1"=20'
 DATE: 11/18/2004
 DRAWN BY: JF/BC
 DESIGNED BY: PKG/RRM
 CHECKED BY: PKG/RRM