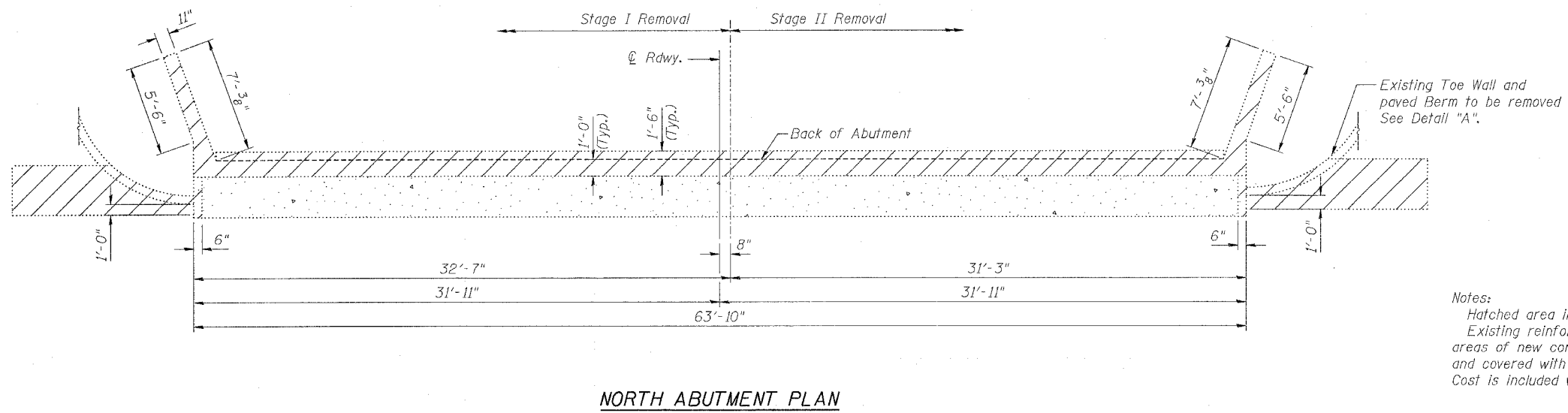
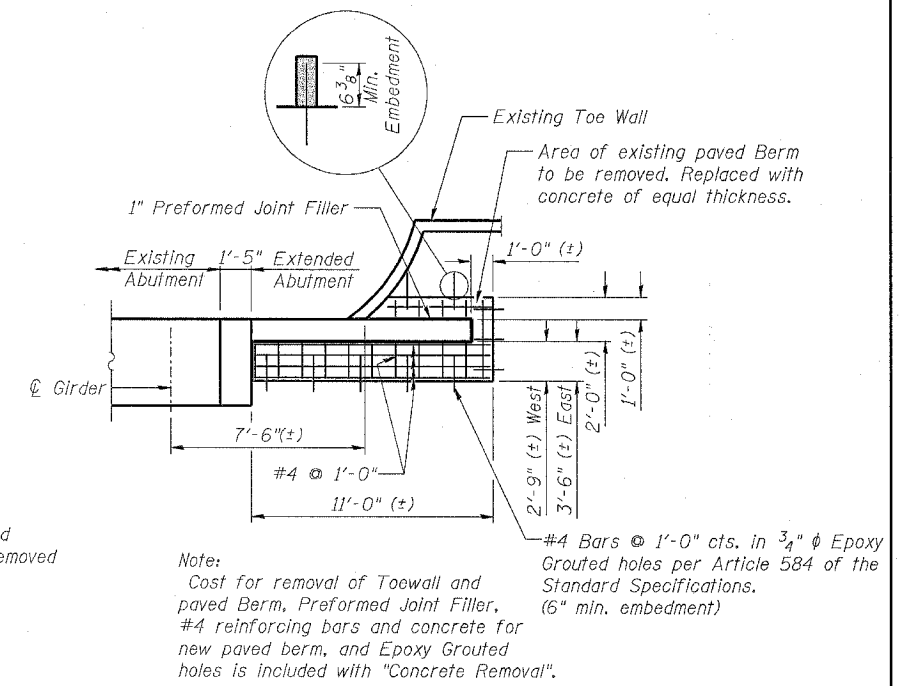
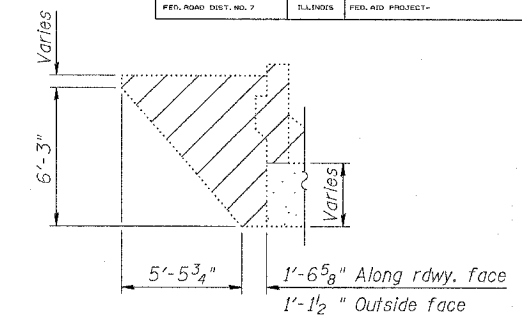
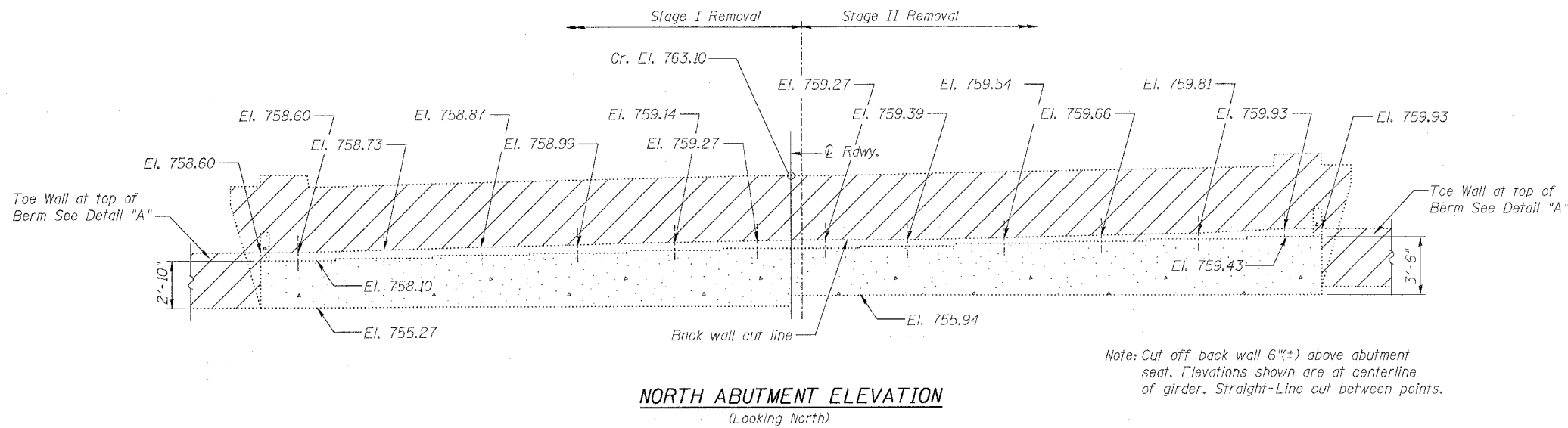


ROUTE NO.	SECTION	COUNTY	TOTAL SHEETS	SHEET NO.	SHEET NO. 15
S.B.L.	19B-2-D	STEPHENSON	57	31	23 SHEETS
F.A. 5					
FED. ROAD DIST. NO. 7	D.A. FUNDS	FED. AID PROJECT			



**BILL OF MATERIAL**

Item	Unit	Total
Concrete Removal	Cu. Yd.	13.7

Notes:  
Hatched area indicates "Concrete Removal".  
Existing reinforcement bars not extending into areas of new construction shall be cut off flush and covered with a 2 in. layer of cement mortar.  
Cost is included with "Concrete Removal".

**CONCRETE REMOVAL**  
**NORTH ABUTMENT**  
U.S. 20 B.R. OVER YELLOW CREEK  
F.A. RT. 5 SEC. 19B-2-D  
STEPHENSON COUNTY  
STATION 56+25.00  
STRUCTURE NUMBER 089-0008

DESIGNED	L.C.M.	20
CHECKED	S.D.K.	EXAMINED
DRAWN	T.L.N.	PASSED
CHECKED	S.D.K.	ENGINEER OF BRIDGE DESIGN
		ENGINEER OF BRIDGES AND STRUCTURES

