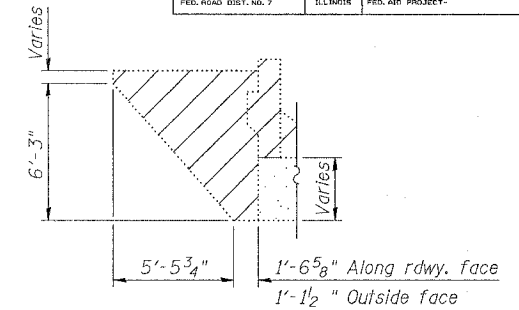
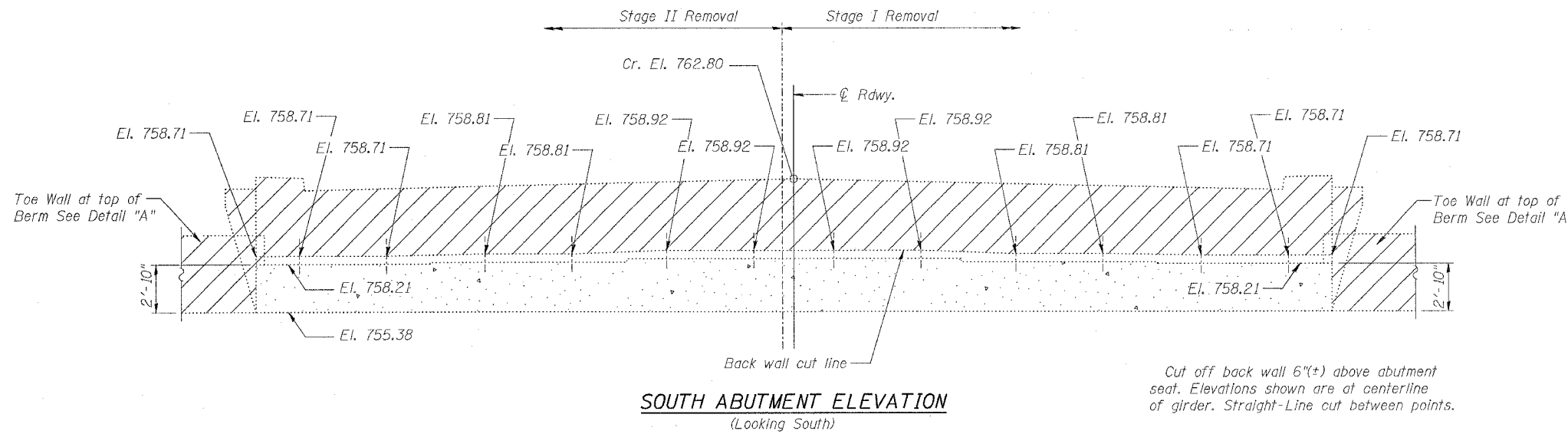


ROUTE NO.	SECTION	COUNTY	TOTAL SHEETS	SHEET NO.
S.B.I. F.A. 5	19B-2-D	STEPHENSON	57	32
FED. ROAD DIST. NO. 7		ILLINOIS	FED. AID PROJECT-	

SHEET NO. 16
23 SHEETS

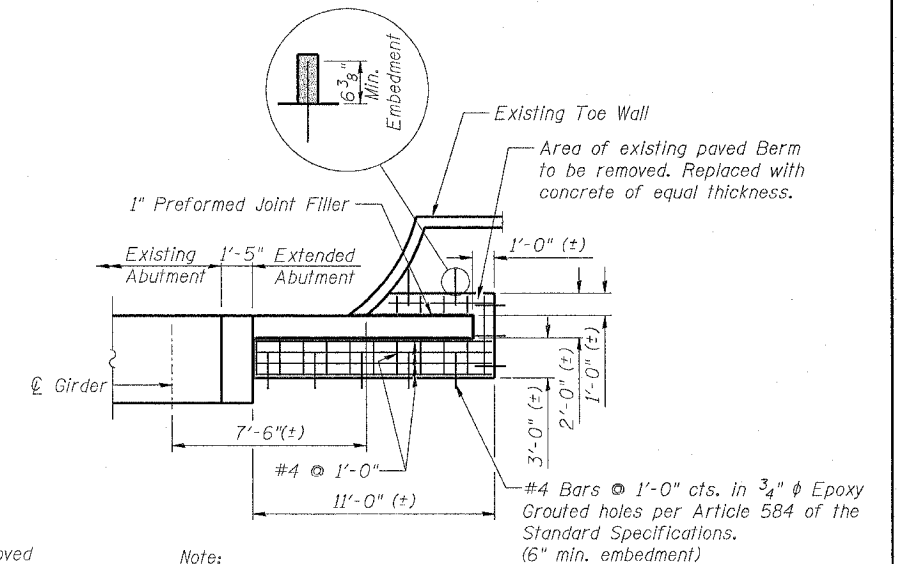


**WINGWALL ELEVATION
SOUTH ABUTMENT**



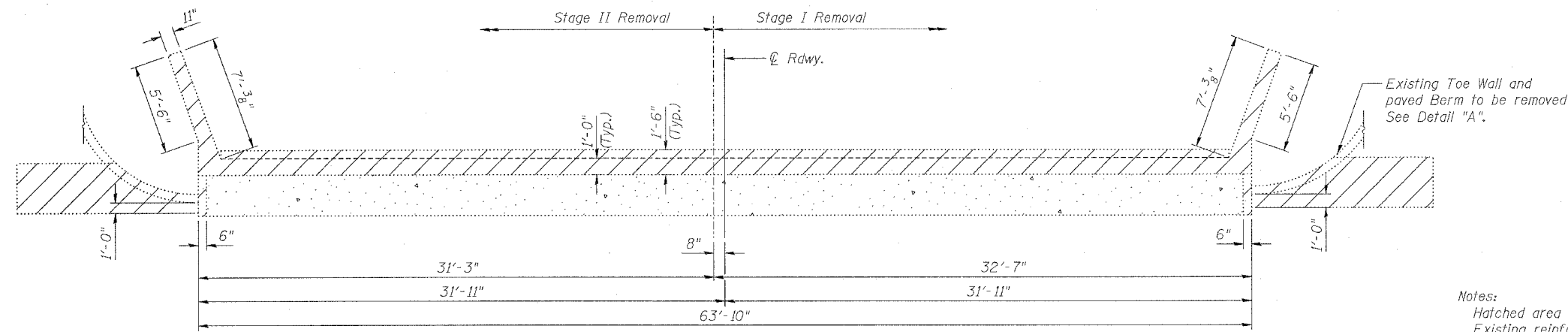
**SOUTH ABUTMENT ELEVATION
(Looking South)**

Cut off back wall 6"(*) above abutment seat. Elevations shown are at centerline of girder. Straight-Line cut between points.



Note:
Cost for removal of Toewall and paved Berm, Preformed Joint Filler, #4 reinforcing bars and concrete for new paved berm, and Epoxy Grouted holes is included with "Concrete Removal".

**DETAIL "A" (PLAN VIEW)
(Typ. Both Wings)**



SOUTH ABUTMENT PLAN

Notes:
Hatched area indicates "Concrete Removal".
Existing reinforcement bars not extending into areas of new construction shall be cut off flush and covered with a 2 in. layer of cement mortar. Cost is included with "Concrete Removal".

BILL OF MATERIAL

Item	Unit	Total
Concrete Removal	Cu. Yd.	13.8

**CONCRETE REMOVAL
SOUTH ABUTMENT
U.S. 20 B.R. OVER YELLOW CREEK
F.A. RT. 5 SEC. 19B-2-D
STEPHENSON COUNTY
STATION 56+25.00
STRUCTURE NUMBER 089-0008**

DESIGNED L.C.M.	20
CHECKED S.D.K.	EXAMINED
DRAWN T.L.N.	PASSED
CHECKED S.D.K.	ENGINEER OF BRIDGE DESIGN
	ENGINEER OF BRIDGES AND STRUCTURES

