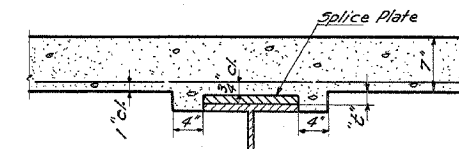


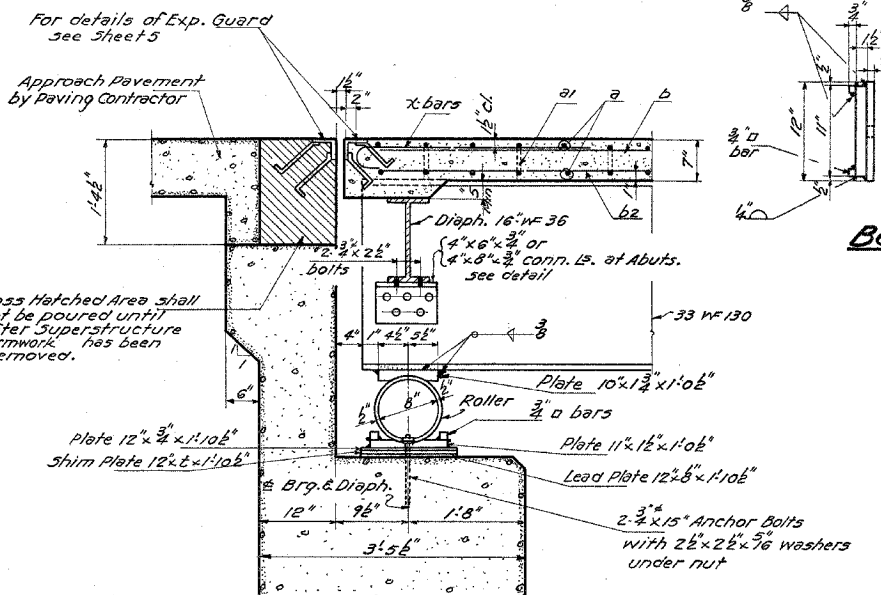
S.B.I. ROUTE NO.	SECTION	COUNTY	TOTAL SHEETS	SHEET NO.
19VF-1, 19F-1	STEPHENSON	57	42	
19VB-1, 19B-1				
FED. ROAD DIST. NO. 7		ILLINOIS		FED. AID PROJECT

STATE OF ILLINOIS
DEPARTMENT OF PUBLIC WORKS & BUILDINGS
DIVISION OF HIGHWAYS

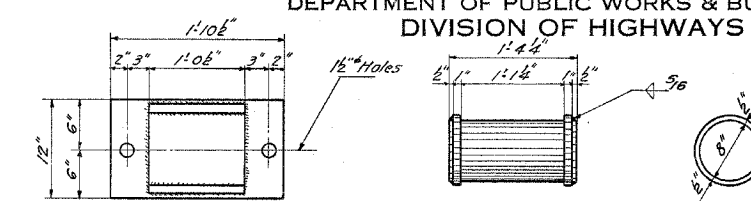


DETAIL OF FILLET

METHOD OF DETERMINING FILLET HEIGHT "f"
After all Structural Steel has been erected, elevations of the top flanges of the beams shall be taken at intervals not to exceed 10 ft. From these elevations subtract increment of Dead Load Deflection for these points determined from Dead Load Deflection Diagram. The elevation so obtained subtracted from the theoretical grade elevation, minus floor thickness equals the fillet height above top of beam

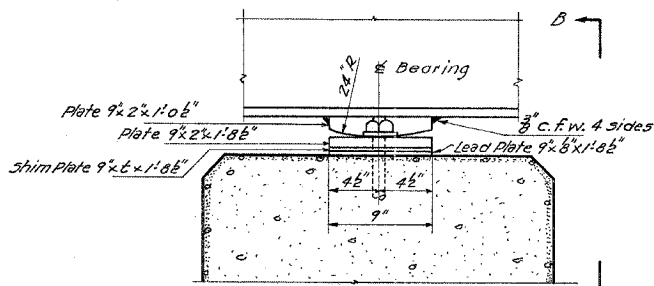


SECTION THRU ABUTMENTS

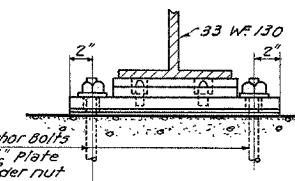


ROLLER AT ABUTMENTS

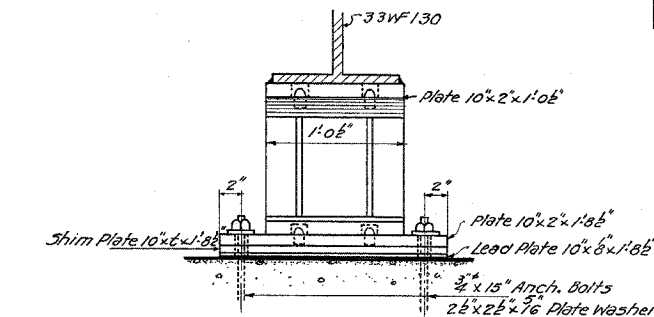
BOTT. BRG. PLATES AT ABUTS.
24 Req'd



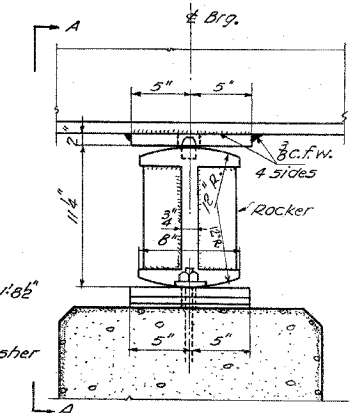
BEARING DETAIL PIER 1



SECTION B-B



SECTION A-A

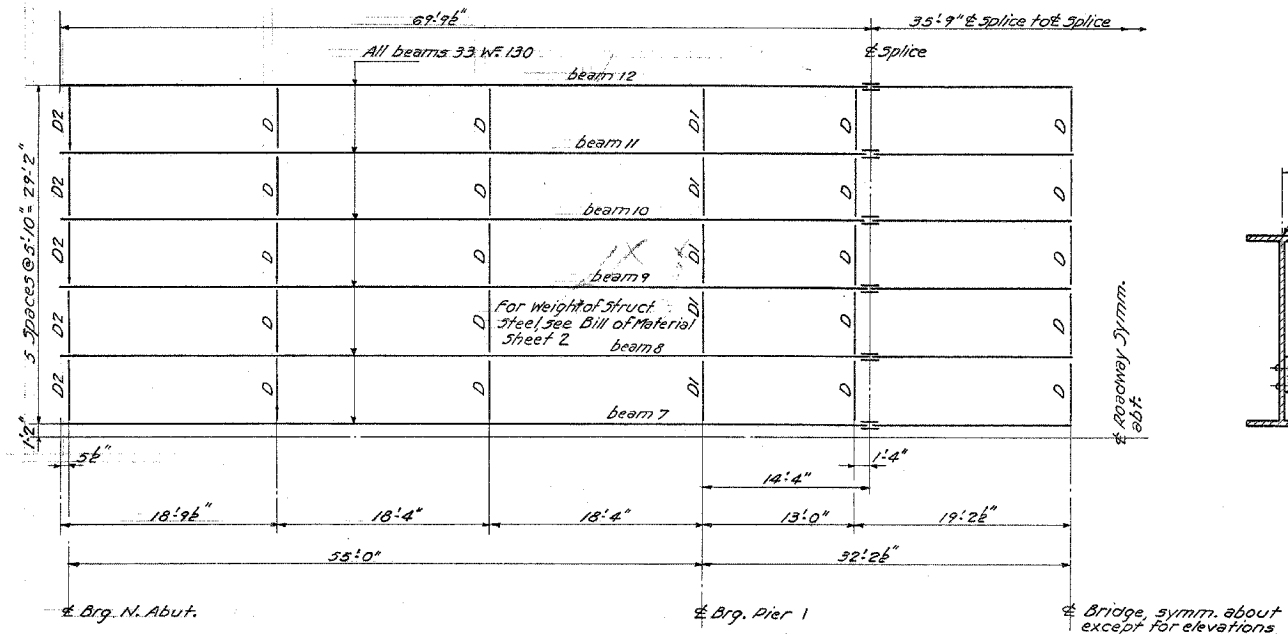


BEARING DETAILS PIER 2

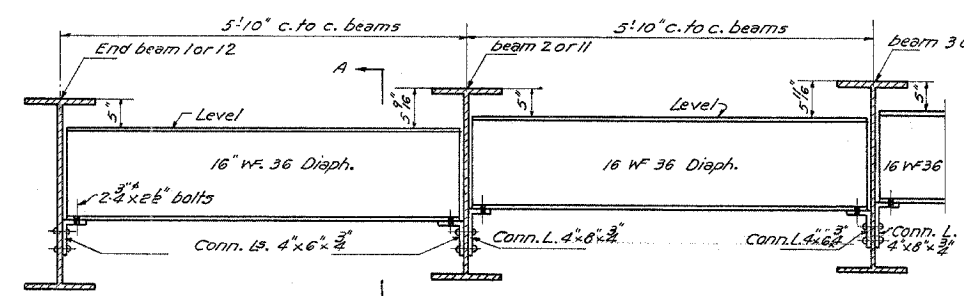
SHIM PLATE THICKNESS - t

Location	Beam Number											
	1	2	3	4	5	6	7	8	9	10	11	12
No. Abut.	0	0	0	0	0	0	0	0	0	0	0	0
Pier 1	0	8	8	8	0	3	3	14	0	11	0	5
Pier 2	0	16	0	16	0	1	1	3	1	4	0	0
So. Abut.	0	16	0	16	0	16	16	0	16	0	16	0

Beam 1 at w. side

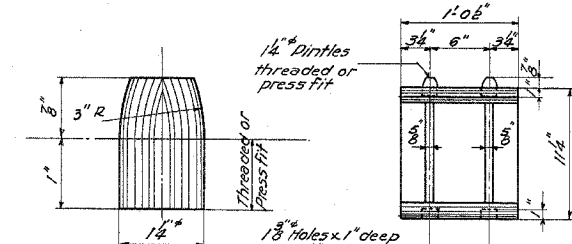


LAYOUT OF STRUCTURAL STEEL PLAN



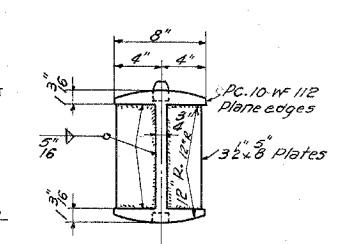
DETAIL OF DIAPHRAGM-D2 AT SO. ABUT.

All Diaphragms level as shown above



PINTLE

72 Req'd.

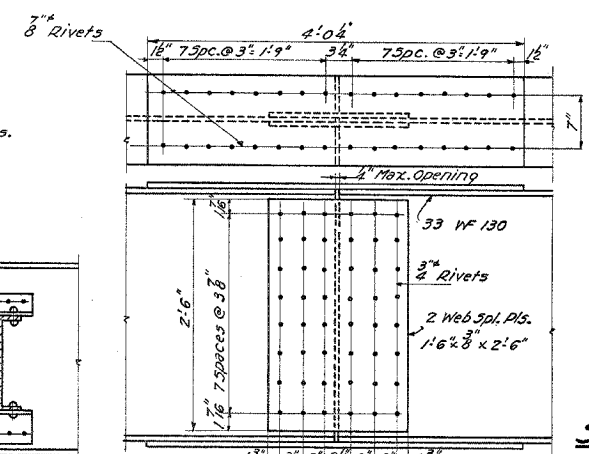


DETAIL OF ROCKER - PIER 2

12 Req'd.

TOP BEARING PLATE - PIER 2

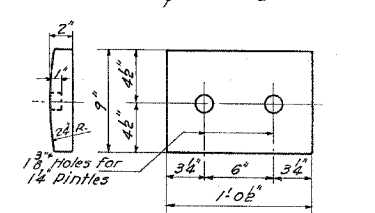
12 Req'd.



DETAIL OF BEAM SPLICE

BOTT. BRG. PLATE - PIER 1 & 2

12 Req'd. - Pier 1
12 Req'd. - Pier 2

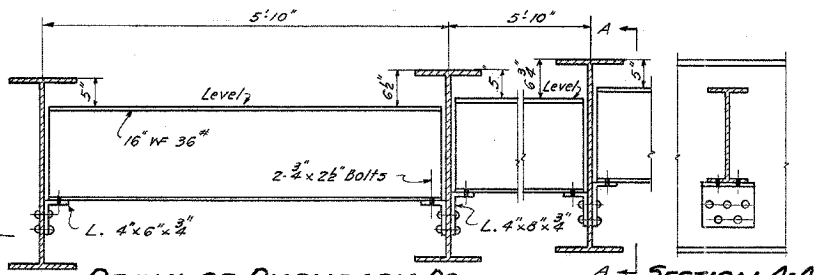


TOP BRG. DETAIL PIER 1

12 Req'd.

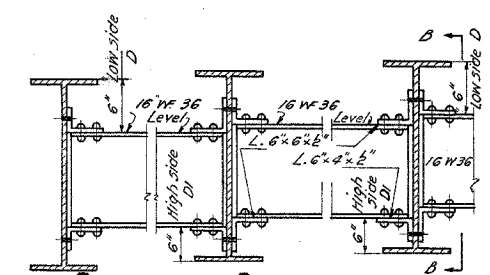
DESIGNED	M. H. Kahl
CHECKED	W. N. Sommer
DRAWN	M. H. Kahl
CHECKED	2072

EXAMINED	V. W. Rovine	Mar. 2 1951
PASSED	E. H. Hunt	
APPROVED	R. H. Baileys	



DETAIL OF DIAPHRAGM-D2 AT N. ABUTMENT

SECTION A-A



DETAIL OF DIAPHRAGM-D2 DI

SECTION B-B

DETAILS
S.B.I. ROUTE 5 - SEC. 19 BF
STEPHENSON COUNTY
STATION 56+25