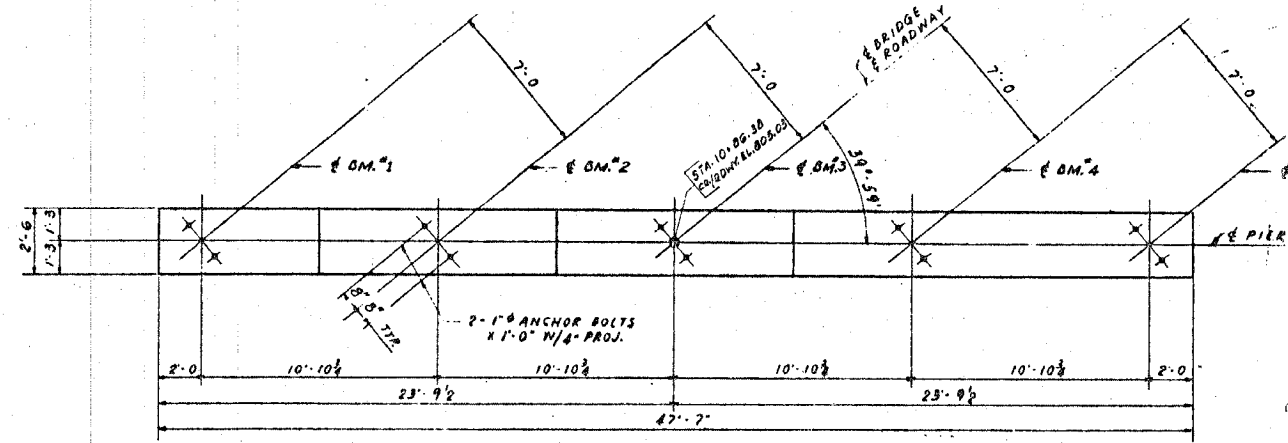
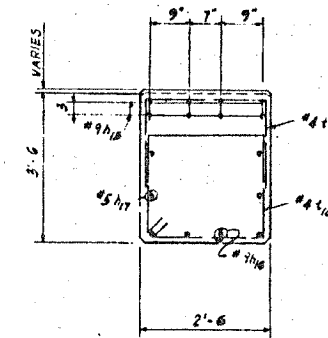


SECTION	COUNTY	TOTAL SHEETS	SHEET NO.
WINNEBAGO	317	191	

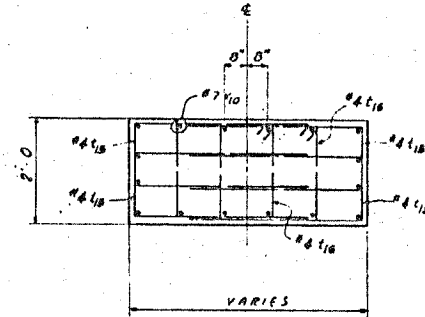
STA. TO STA.
 FED. ROAD DIST. NO. ILLINOIS FED. AID PROJECT



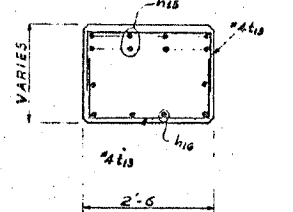
TOP PLAN
 SCALE 1/4" = 1'-0"



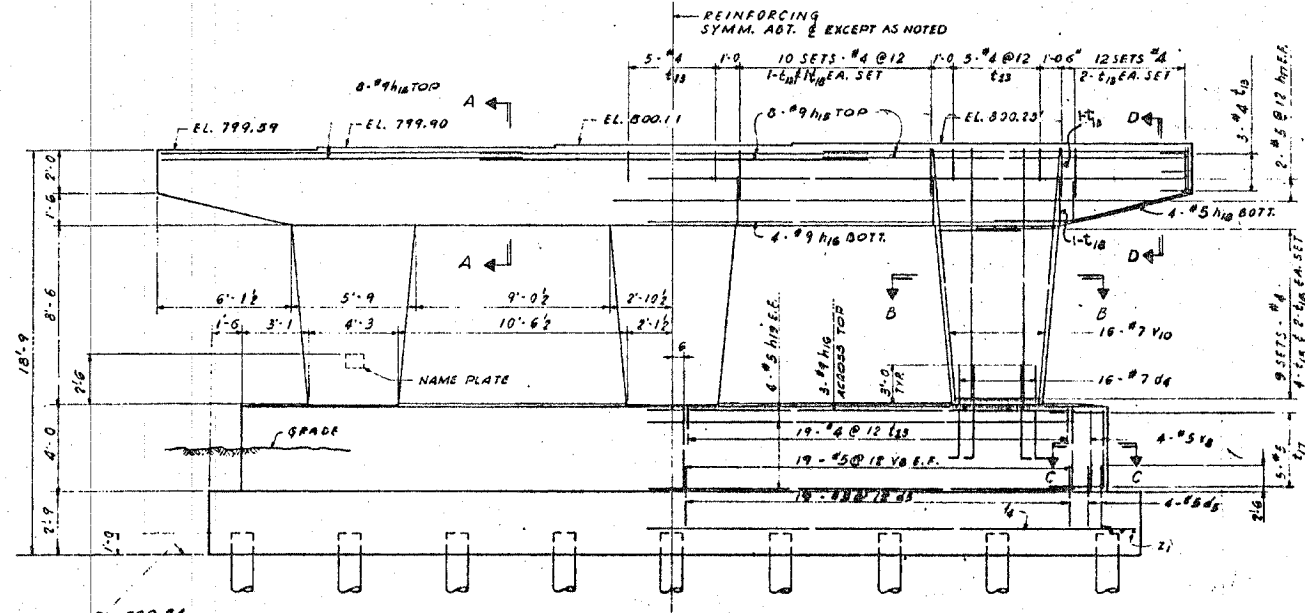
SECTION A-A



SECTION B-B



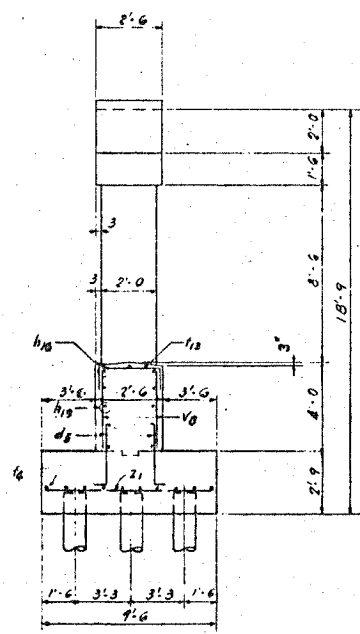
SECTION D-D



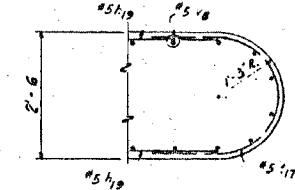
DIMENSIONS REINFORCING

NOTE: PLACE A NAME PLATE ON THE NORTH FACE AT THE WEST END.

ELEVATION
 SCALE 1/4" = 1'-0"



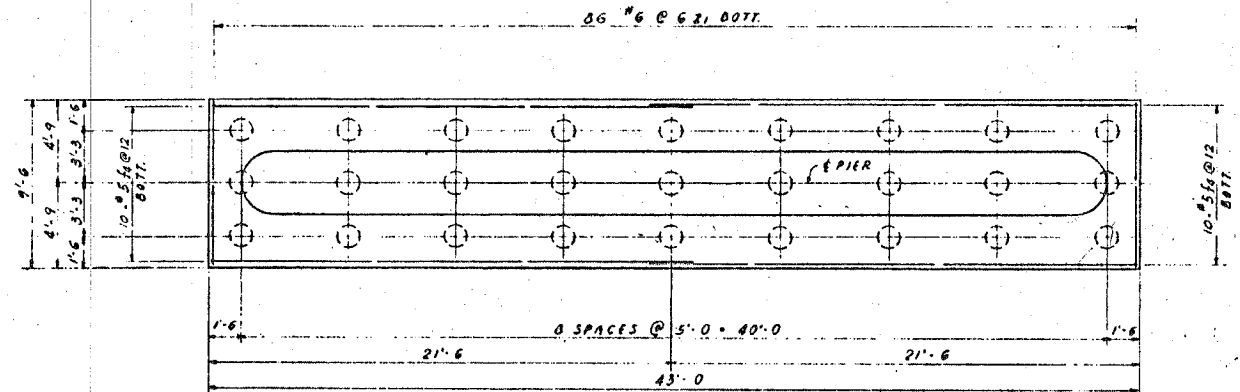
END VIEW



SECTION C-C

NOTES
 FOR GENERAL NOTES SEE SH. #2
 FOR REINFORCING SCHEDULE SEE SH. #15

PILE DATA
 20 TON CRESOTED TIMBER PILES
 NUMBER REQ'D. - 27
 ESTIMATED LENGTH - 10 FT.



FOOTING PLAN

QUANTITIES FOR PIER 3		
ITEM	UNIT	TOTAL
CLASS "X" CONCRETE	CU. YDS	77.3
REINFORCEMENT BARS	LBS.	8610
CRESOTED PILES	LIN. FT.	270
METAL SHOTS	EACH	27
CLASS "A" EXCAVATION FOR STRUCTURES	CU. YDS.	82

REVISIONS	
NAME	DATE

ILLINOIS DEPARTMENT OF TRANSPORTATION

SCALE: VERT. / HORIZ.
 DATE

DRAWN BY
 CHECKED BY

PIER 3
 SOUTH PIER AT
 PERRYVILLE ROAD
 SN 101-0098

FOR INFORMATION ONLY

PLOT DATE = Tue Dec 21 09:23:37 2004
 FILE NAME = c:\projects\sn101-0098\p12506p1.dgn
 PLOT SCALE = 3/32" = 1' / IN.
 REFERENCE = SHEET #