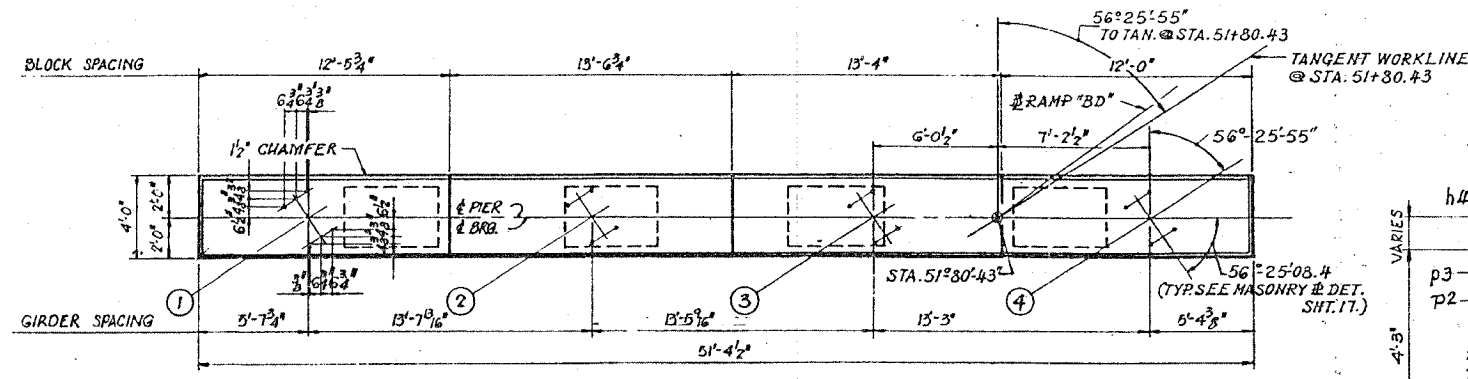
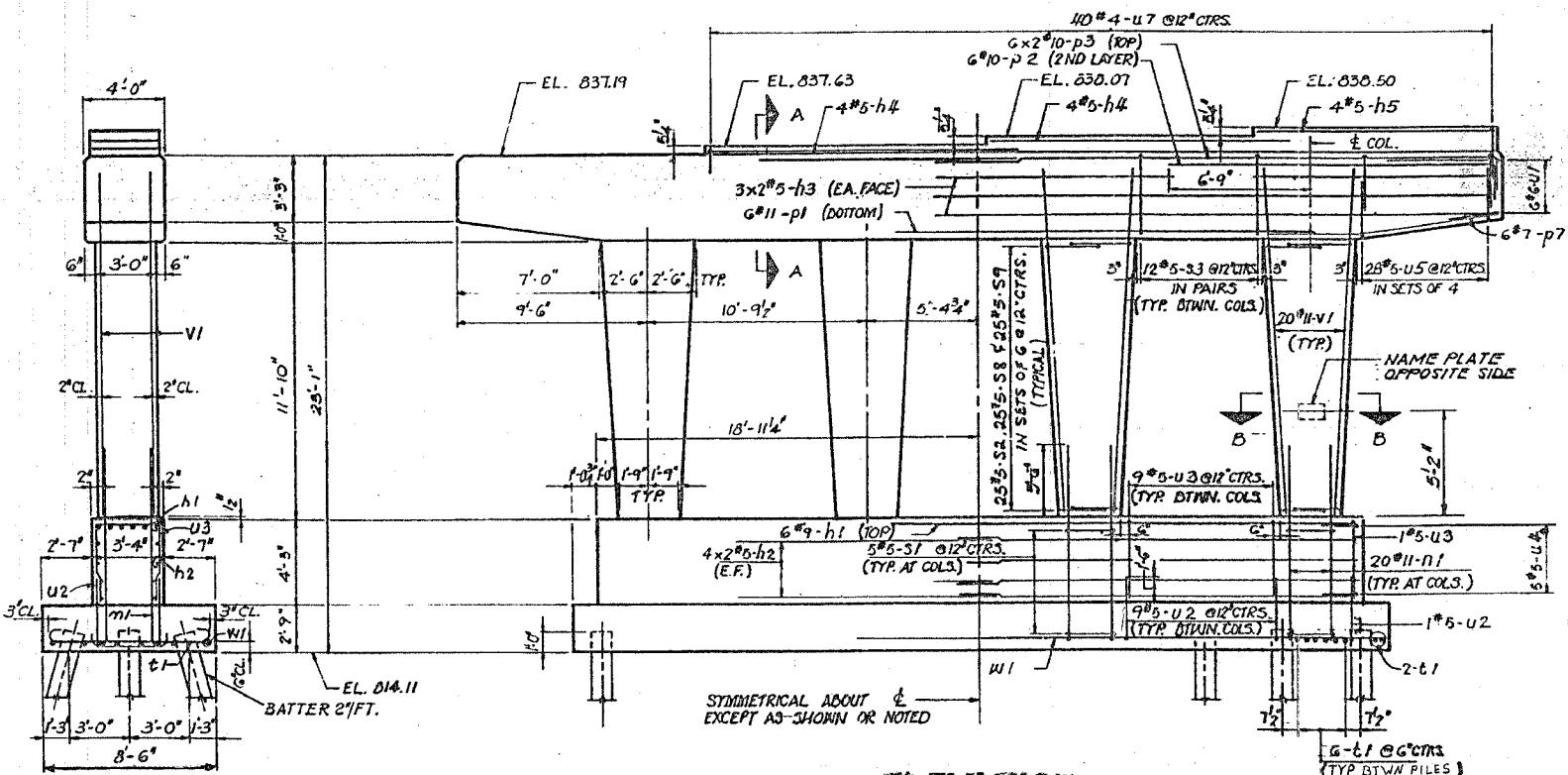


F.A. RTL.	SECTION	COUNTY	TOTAL SHEETS	SHEET NO.
**	**	WINNEBAGO	317	105
STA.	TO STA.			
FED. ROAD DIST. NO.		ILLINOIS FED. AID PROJECT		



TOP PLAN



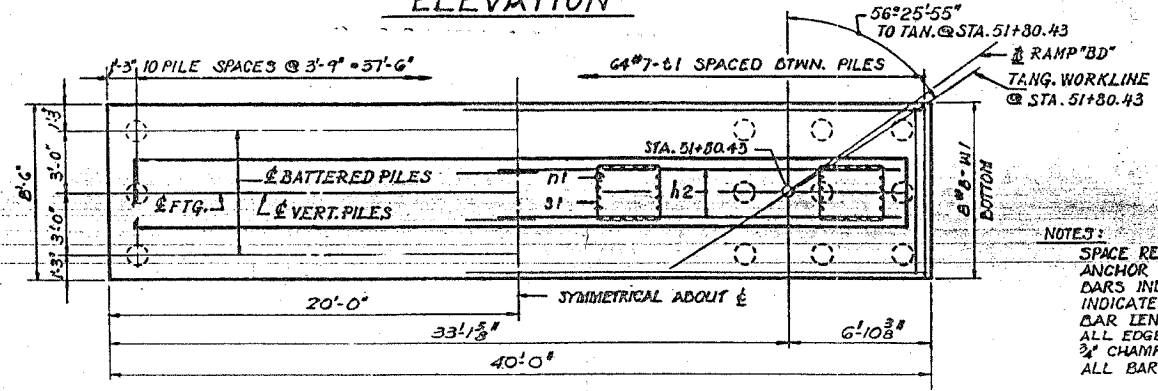
ELEVATION

END VIEW

PILE DATA

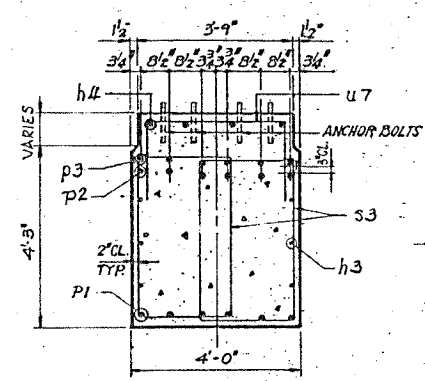
TYPE	CONCRETE
CAPACITY	20 TON
EST. LENGTH	25'
NO. REQUIRED	35*

\*INCLUDES ONE TEST PILE

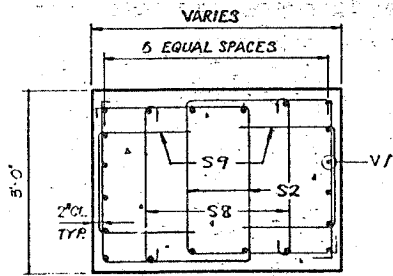


FOOTING PLAN

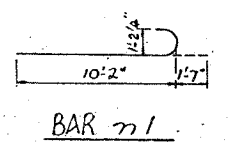
MEDIAN PIER  
 AT RAMP BD  
 SN 101-0136



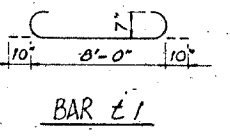
SECTION A-A



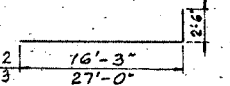
SECTION B-B



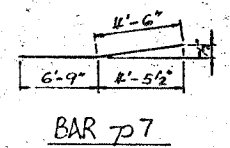
BAR m1



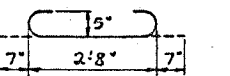
BAR t1



BARS p2 & p3



BAR p7



BAR s8

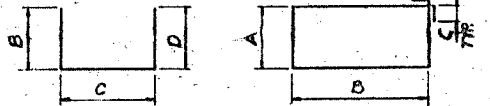
NOTE:  
 ALL BAR DIMENSIONS  
 ARE OUT TO OUT.

BILL OF MATERIAL

BAR NO.	SIZE	LENGTH	SHAPE
h1	6 #9	37'-6"	—
h2	16 #5	19'-6"	—
h3	12 #5	26'-3"	—
h4	8 #5	18'-9"	—
h5	4 #5	11'-6"	—
m1	80 #11	11'-9"	—
p1	6 #11	33'-0"	—
p2	12 #10	18'-9"	—
p3	12 #10	29'-6"	—
p7	12 #7	11'-3"	—
s1	20 #5	12'-7"	—
s2	100 #5	11'-11"	—
s3	36 #5	13'-5"	—
s8	100 #5	3'-10"	—
s9	100 #5	4'-9"	—
t1	60 #7	9'-8"	—
u1	12 #6	8'-6"	—
u2	29 #5	10'-6"	—
u3	29 #5	11'-2"	—
u4	10 #5	6'-6"	—
u5	56 #5	7'-6"	—
u7	40 #4	8'-6"	—
v1	80 #11	15'-5"	—
w1	8 #8	39'-6"	—

STRUCTURE EXCAVATION	CYLOS	G2
CLASS "X" CONCRETE	CYLOS	115.1
REINFORCEMENT BARS	LBS.	23,440
CONCRETE PILES	LIN. FT.	736
TEST PILES, CONCRETE	EACH	1



MARK	B	C	D
U1	2'-6"	3'-6"	2'-5 1/2"
U2	3'-9"	5'-0"	3'-9"
U3	4'-1"	5'-0"	4'-1"
U4	1'-10"	2'-10"	1'-9 1/2"
U5	2'-7"	2'-8"	2'-7"
U7	2'-7"	3'-8"	2'-7"
S9	1'-6"	1'-9"	1'-6"

MARK	A	B	C
S1	2'-5"	3'-2"	5 1/2"
S2	2'-8"	2'-10"	3 1/2"
S3	2'-2"	3'-11"	5 1/2"

NOTES:  
 SPACE REINFORCEMENT IN CAP TO MISS ANCHOR BOLTS.  
 BARS INDICATED THUS: 3x2#8 ETC. INDICATES 3 LINES OF BARS WITH 2 BAR LENGTHS PER LINE.  
 ALL EDGES SHALL HAVE STANDARD 3/4" CHAMFERS EXCEPT AS OTHERWISE NOTED.  
 ALL BAR DIMENSIONS ARE OUT TO OUT.

REVISIONS	
NAME	DATE

ILLINOIS DEPARTMENT OF TRANSPORTATION

SCALE: VERT. HORIZ.  
 DATE: DRAWN BY: CHECKED BY:

FOR INFORMATION ONLY

PLT DATE = Tue Dec 21 09:15:37 2004  
 FILE NAME = I:\02\2004\101-0136\101-0136.dgn  
 PLOT SCALE = 50.000000 / 1 IN.  
 REFERENCE = \*REF\*