

F.A.P. RTE.	SECTION	COUNTY	TOT. SHEETS
595	1-3-K	ROCK ISLAND	476

114
-490

D-92-096-84

STATE OF ILLINOIS
DEPARTMENT OF TRANSPORTATION
DIVISION OF HIGHWAYS

PROPOSED HIGHWAY PLANS

F.A.P. ROUTE 595 (ILLINOIS ROUTE 5)
SECTION 1-3-K

ROCK ISLAND COUNTY
C-92-041-05

FOR INDEX OF SHEETS, SEE SHEET NO. 2

DESIGN DESIGNATION
4930 (20) - MINOR COLLECTOR - 6.03 (PCC-29)



LOCATION OF SECTION INDICATED THIS: [Symbol]

I HEREBY CERTIFY THAT THIS ENGINEERING DOCUMENT WAS PREPARED BY ME OR UNDER MY DIRECT PERSONAL SUPERVISION AND THAT I AM A DULY LICENSED PROFESSIONAL ENGINEER UNDER THE LAWS OF THE STATE OF ILLINOIS.

Dwight T. Schwertley
DWIGHT T. SCHWERTLEY
IL REGISTRATION NO. 062-0338
EXPIRES 11/30/05
12/21/04 DATE

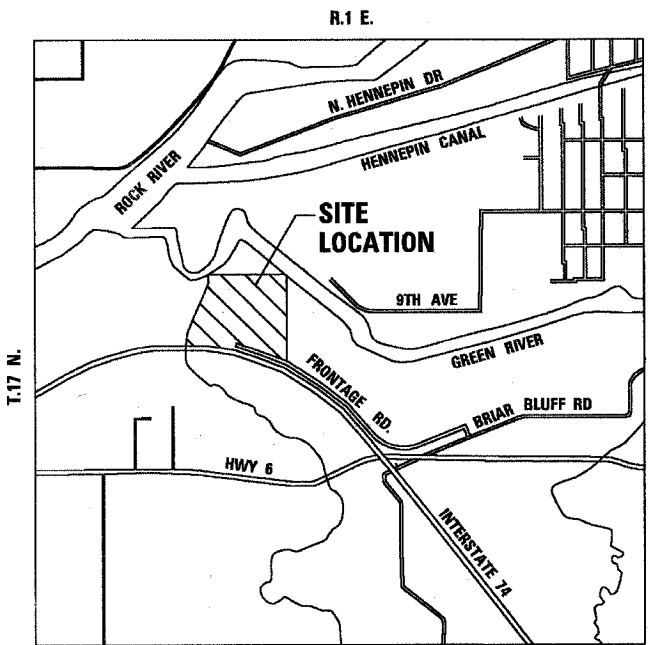
STATE OF ILLINOIS
DEPARTMENT OF TRANSPORTATION
DIVISION OF HIGHWAYS

SUBMITTED 12/23/04 20
Gregory L. Mounts
DEPUTY DIRECTOR OF HIGHWAYS, REGION TWO ENGINEER

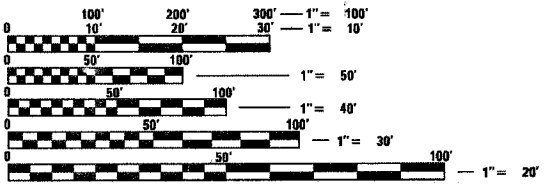
20
ENGINEER OF DESIGN AND ENVIRONMENT

20
DIRECTOR, DIVISION OF HIGHWAYS

PRINTED BY THE AUTHORITY
OF THE STATE OF ILLINOIS



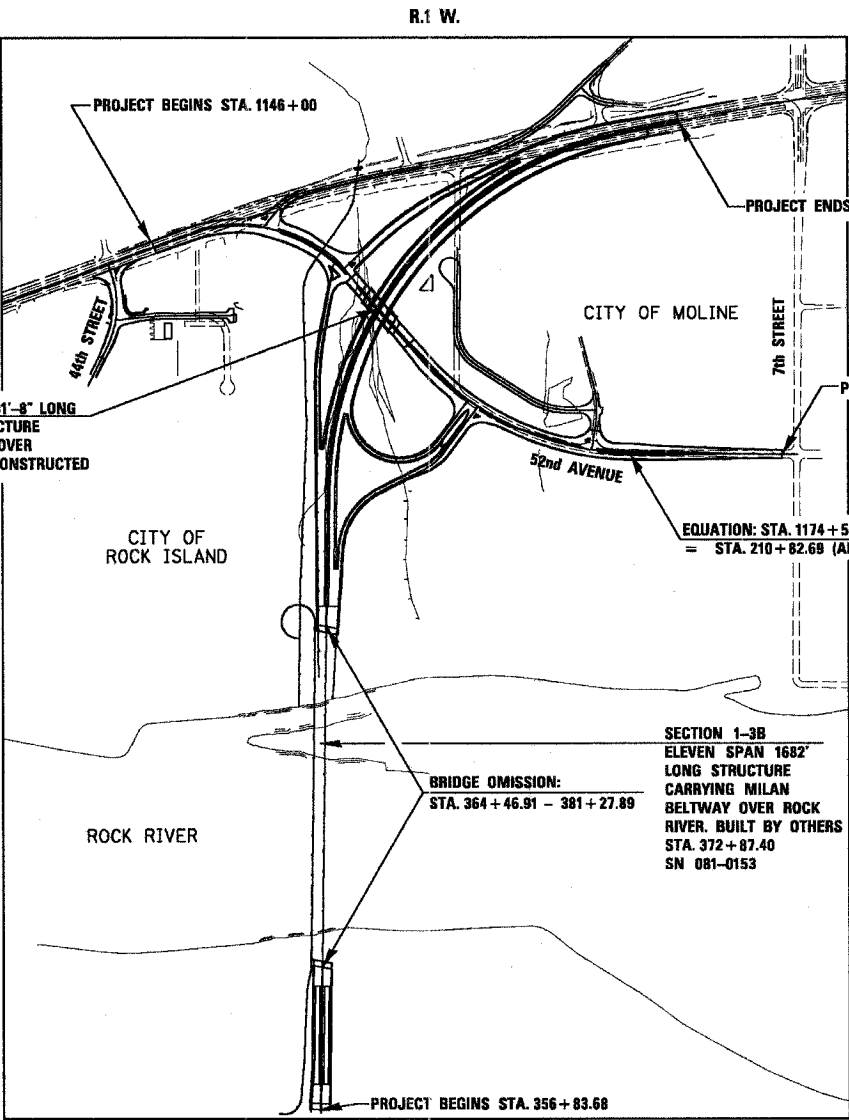
WETLANDS LOCATION MAP



FULL SIZE PLANS HAVE BEEN PREPARED USING STANDARD ENGINEERING SCALES. REDUCED SIZED PLANS WILL NOT CONFORM TO STANDARD SCALES. IN MAKING MEASUREMENTS ON REDUCED PLANS, THE ABOVE SCALES MAY BE USED.

J.U.L.I.E.
JOINT UTILITY LOCATION INFORMATION FOR EXCAVATION
1-800-892-0123

SOUTH LINE TOWNSHIP : SECTION 18
CONTACT NO. 64647



INCLUDE A TWO SPAN 201'-8" LONG GRADE SEPARATION STRUCTURE CARRYING 52ND AVENUE OVER MILAN BELTWAY TO BE CONSTRUCTED UNDER THIS CONTRACT STA. 1159+12.92 SN 081-0156

SECTION 1-3B
ELEVEN SPAN 1682' LONG STRUCTURE CARRYING MILAN BELTWAY OVER ROCK RIVER. BUILT BY OTHERS STA. 372+87.40 SN 081-0153



LOCATION MAP

SCALE = 1"=500'
GROSS LENGTH OF PROJECT = 9451.28 FEET = 1.790 MILES
NET LENGTH OF PROJECT = 7770.30 FEET = 1.472 MILES

PREPARED BY
MISSMAN, STANLEY & ASSOCIATES

PROJECT ENGINEER : ROBERT V.
SR. SQUAD LEADER : BECKY MARRUFFO 815-284-5902
CONSULTANT : DWIGHT T. SCHWERTLEY
MISSMAN, STANLEY & ASSOCIATES
309-788-7644