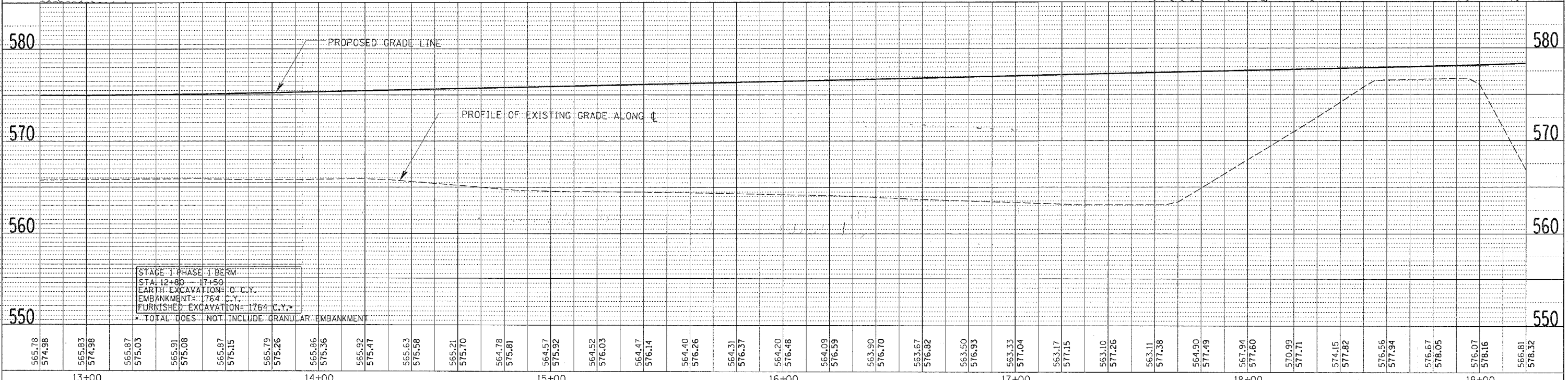
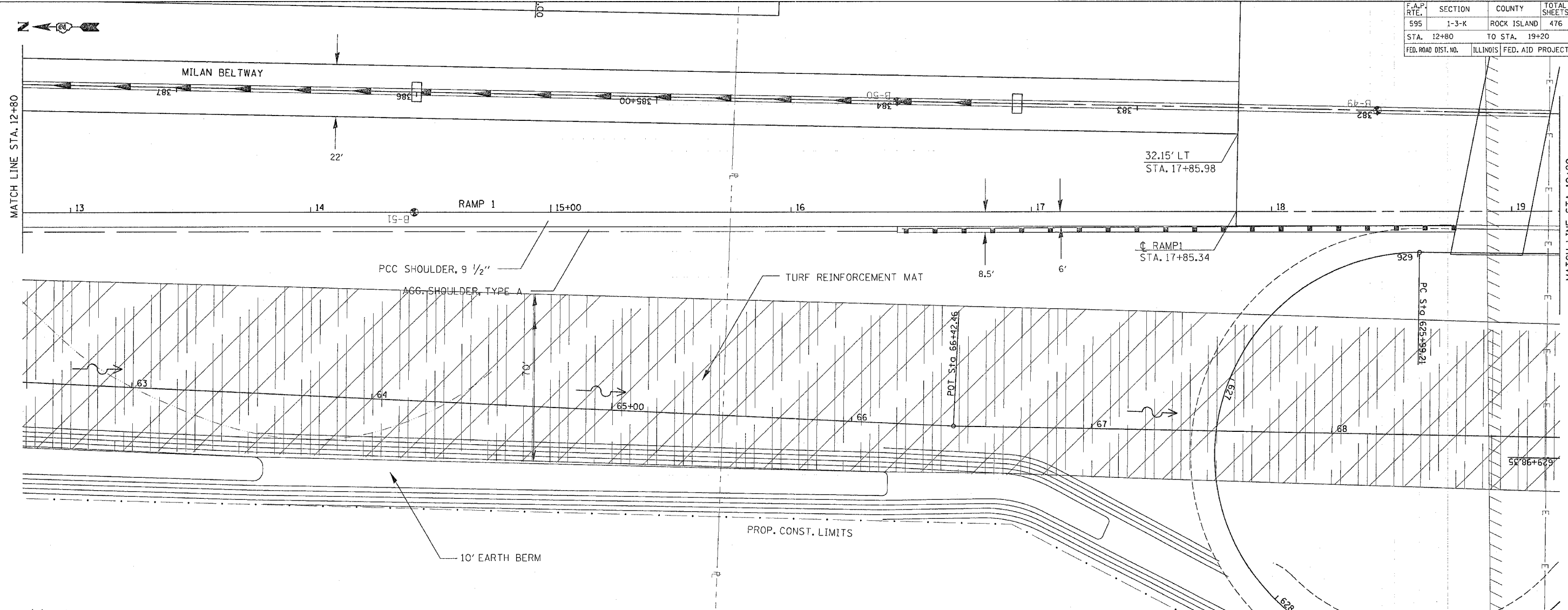


F.A.P. RTE.	SECTION	COUNTY	TOTAL SHEETS	SHEET NO.
595	1-3-K	ROCK ISLAND	476	122
STA. 12+80		TO STA. 19+20		
FED. ROAD DIST. NO.	ILLINOIS	FED. AID PROJECT		



STAGE 1 PHASE 1 BERM
 STA. 12+80 - 17+50
 EARTH EXCAVATION= 0 C.Y.
 EMBANKMENT= 1764 C.Y.
 FURNISHED EXCAVATION= 1764 C.Y.
 * TOTAL DOES NOT INCLUDE GRANULAR EMBANKMENT

52ND AVENUE RAMP 1 - STA. 12+80 TO STA. 19+20

PLAN	DATE
SURVEYED	
NOTED	
CHECKED	
BY	

PROFILE	DATE
SURVEYED	
NOTED	
CHECKED	
BY	