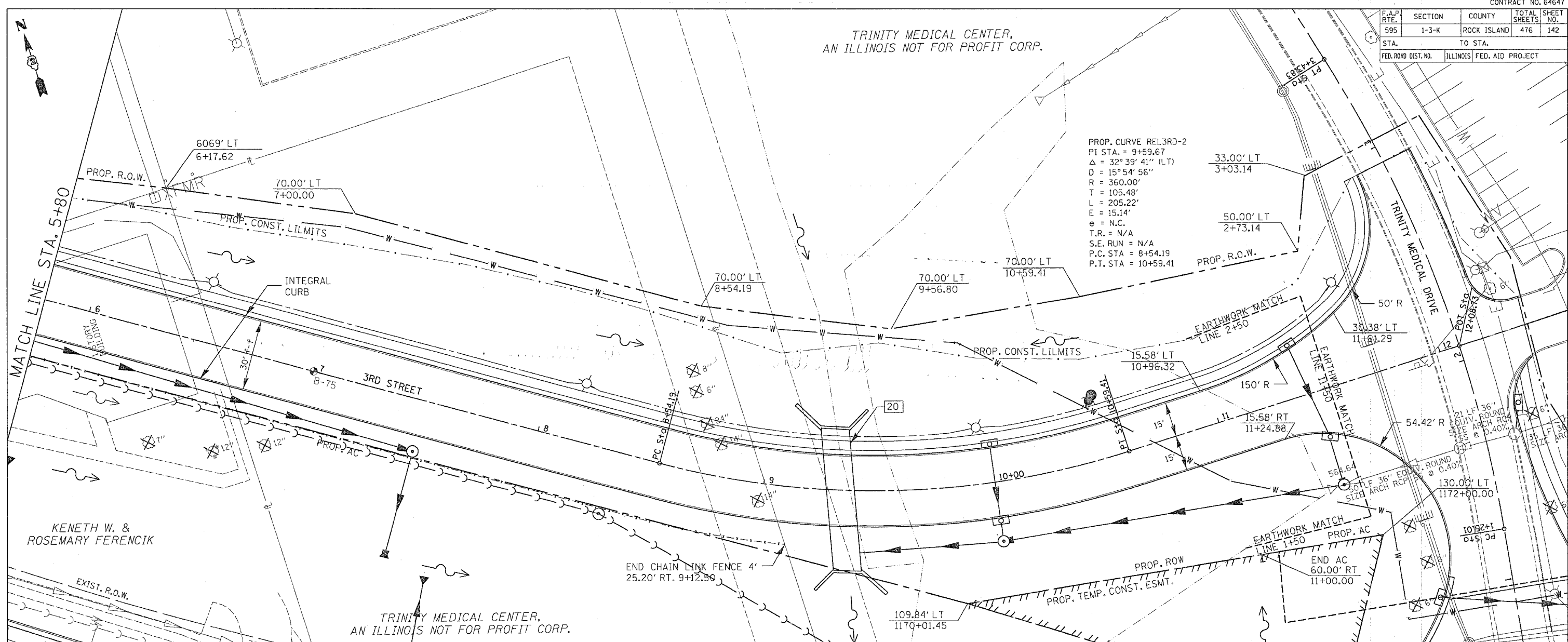


F.A.P. RTE.	SECTION	COUNTY	TOTAL SHEETS	SHEET NO.
595	1-3-K	ROCK ISLAND	476	142
STA.		TO STA.		
FED. ROAD DIST. NO.		ILLINOIS FED. AID PROJECT		

TRINITY MEDICAL CENTER,  
AN ILLINOIS NOT FOR PROFIT CORP.

PROP. CURVE REL3RD-2  
 PI STA. = 9+59.67  
 $\Delta = 32^\circ 39' 41''$  (LT)  
 $D = 15^\circ 54' 56''$   
 $R = 360.00'$   
 $T = 105.48'$   
 $L = 205.22'$   
 $E = 15.14'$   
 $e = N.C.$   
 $T.R. = N/A$   
 $S.E. RUN = N/A$   
 $P.C. STA = 8+54.19$   
 $P.T. STA = 10+59.41$



DATE: \_\_\_\_\_ BY: \_\_\_\_\_

REVISIONS:

NO.	DATE	BY	DESCRIPTION

PLAN: \_\_\_\_\_

NOTE BOOK: \_\_\_\_\_

ALIGNED CHECKED: \_\_\_\_\_

FILE NO.: \_\_\_\_\_

DATE: \_\_\_\_\_ BY: \_\_\_\_\_

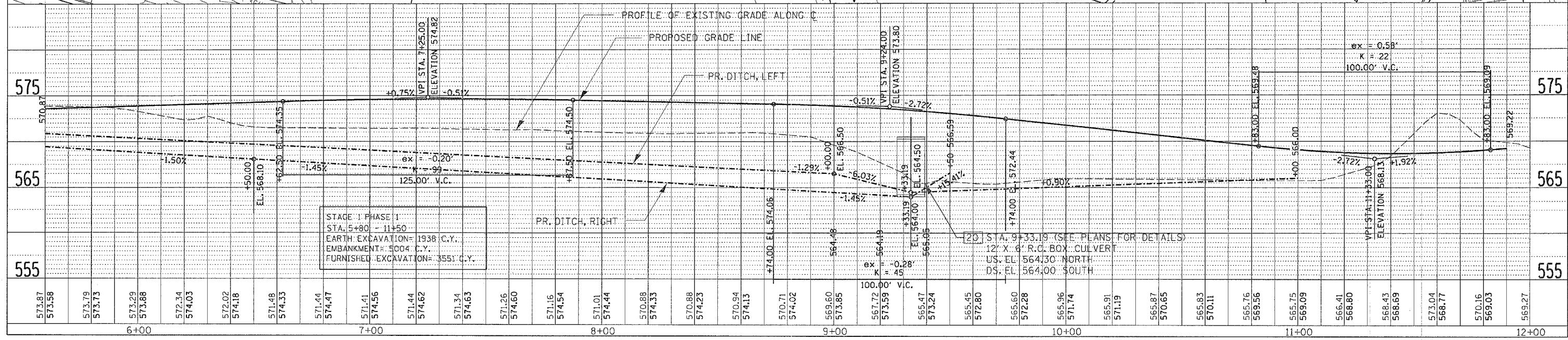
REVISIONS:

NO.	DATE	BY	DESCRIPTION

PROFILE: \_\_\_\_\_

GRADES CHECKED: \_\_\_\_\_

STRUCTURE NOTATION: \_\_\_\_\_



STAGE I PHASE I  
 STA. 5+80 - 11+50  
 EARTH EXCAVATION= 1938 C.Y.  
 EMBANKMENT= 5004 C.Y.  
 FURNISHED EXCAVATION= 3551 C.Y.

20' STA. 9+33.19 (SEE PLANS FOR DETAILS)  
 12' X 6' R.C. BOX CULVERT  
 US. EL. 564.30 NORTH  
 DS. EL. 564.00 SOUTH