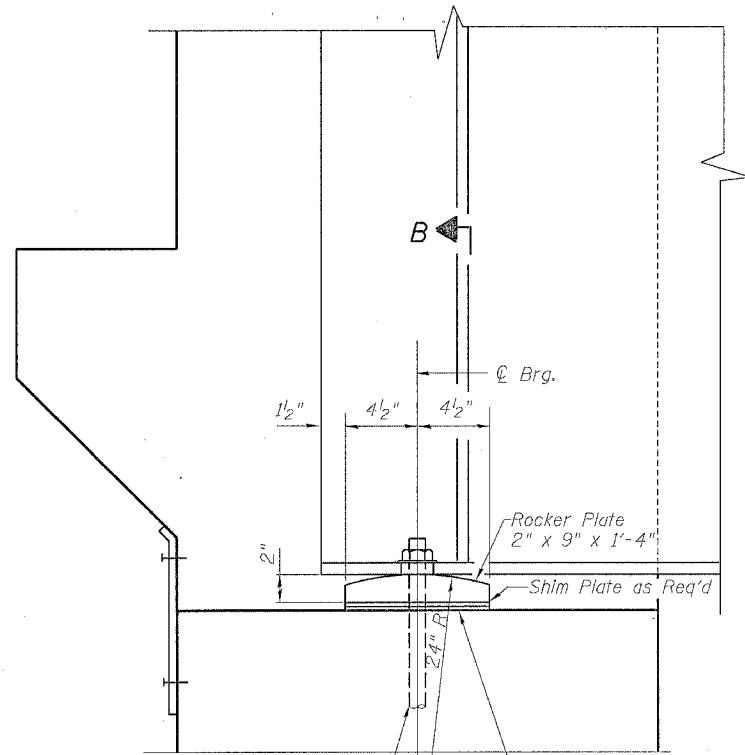


STATE OF ILLINOIS
DEPARTMENT OF TRANSPORTATION

ROUTE NO.	SECTION	COUNTY	SHEET NO.	SHEET	SHEET NO. 13
F.A.P. 595	1-3-K	Rock Island	476	264	22 SHEETS
FED. ROAD DIST. NO. 7	ILLINOIS	FED. AID PROJECT			



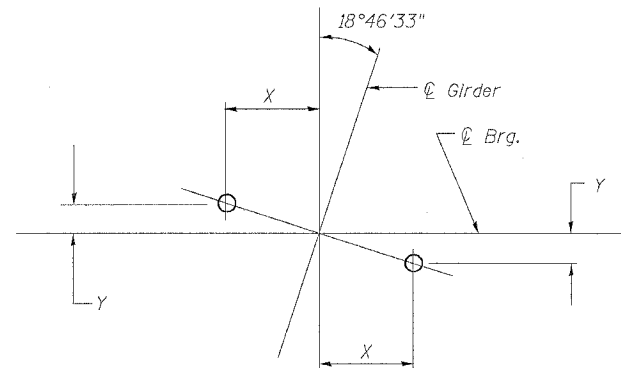
1" ϕ x 12" anchor bolt with 1 3/8" x 2" slotted hole in the bottom flange. (one each side of web.) Contractor has option of cast in place or drilled installation.

1/8" elastomeric neoprene leveling pad according to Art. 1052.02 of the Standard Specifications. Cost included with Structural Steel.

ELEVATION AT ABUTMENT

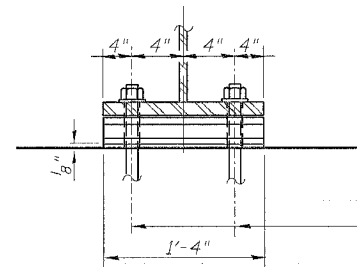
FIXED BEARING

18 Required



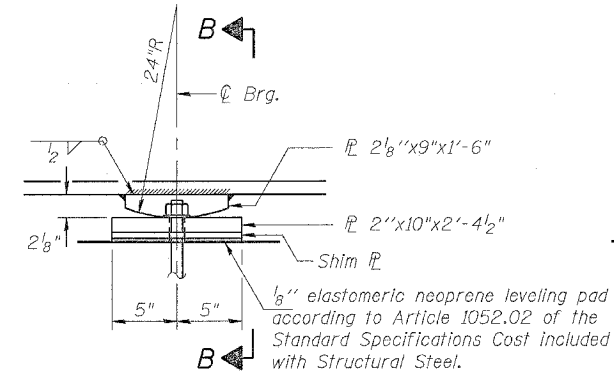
ANCHOR BOLT LOCATION DETAIL

	X	Y
Abutments	3 13/16"	1 5/16"
Pier	11 3/8"	3 7/8"



SECTION B-B

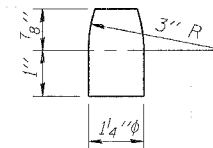
1" ϕ x 12" Anchor bolts with 2 1/4" x 2 1/4" x 5/16" \mathbb{R} washer under nut. Provide 1 1/2" ϕ Holes in bearing \mathbb{R} .



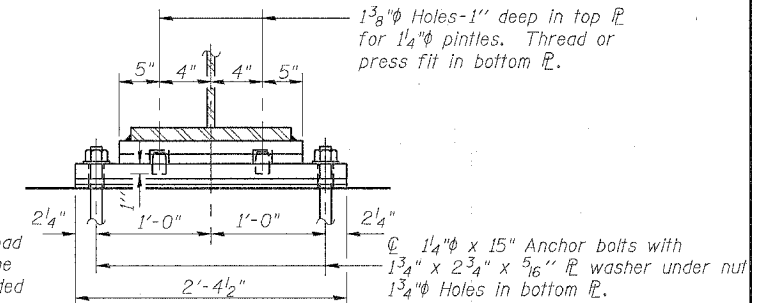
ELEVATION AT PIER

FIXED BEARING

9 Required



PINTLE



SECTION B-B

Note:
All bearing plates, shim plates and pintles shall be AASHTO M270 Grade 50.
Anchor Bolts at Fixed bearings may be built into the masonry.
See Sheet 14 for Anchor Bolt Installation.

BEARING DETAILS

52nd AVE. OVER MILAN BELTWAY
FAU ROUTE 5822 SECTION 1-3
ROCK ISLAND COUNTY
STATION 1159+12.92
STRUCTURE NO. 081-0156

DESIGNED	JDC
CHECKED	JBF
DRAWN	RAP
CHECKED	JBF