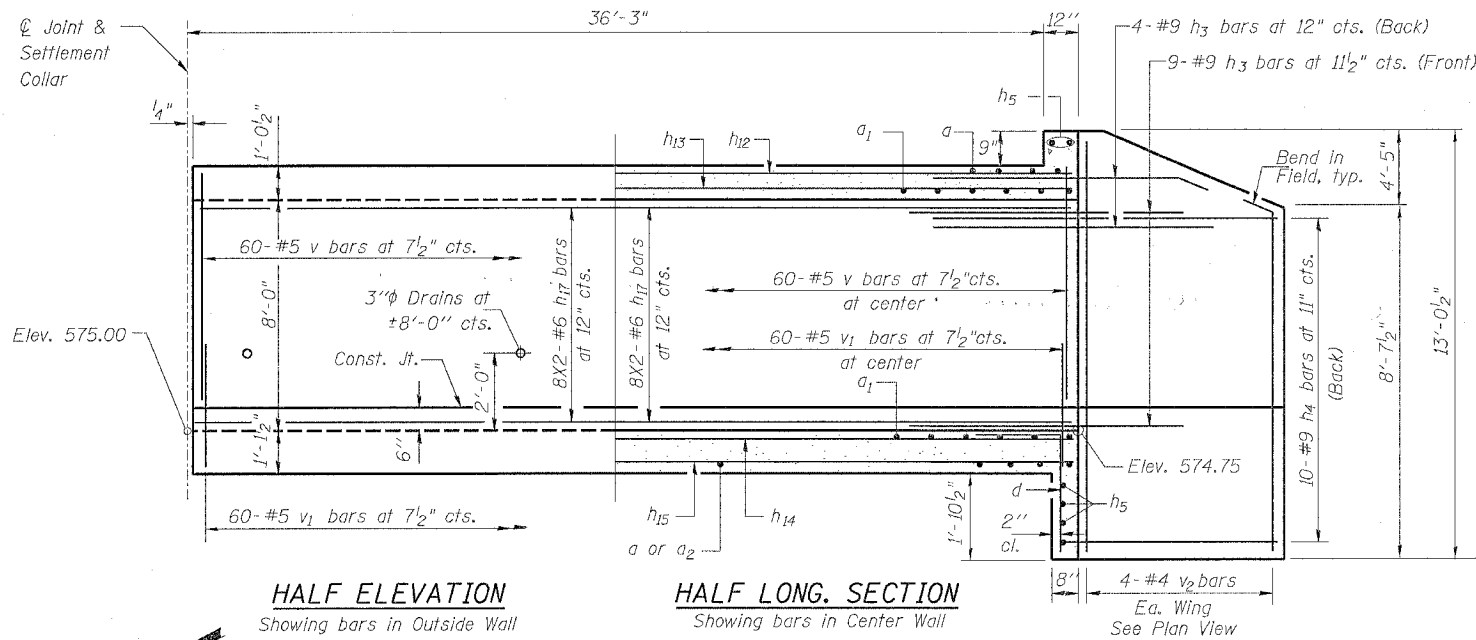


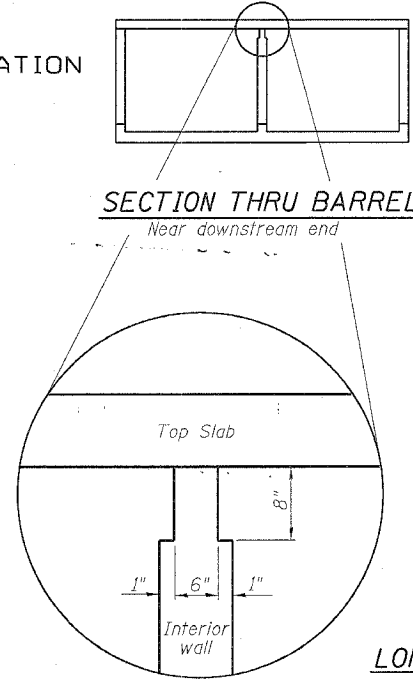
STATE OF ILLINOIS  
DEPARTMENT OF TRANSPORTATION

ROUTE NO.	SECTION	COUNTY	TOTAL SHEETS	SHEET NO.	SHEET NO. 4 7 SHEETS
F.A.P. 595	I-3-K	Rock Island	476	277	
FED. ROAD DIST. NO. 7	ILLINOIS	FED. AID PROJECT-			



**HALF ELEVATION**  
Showing bars in Outside Wall

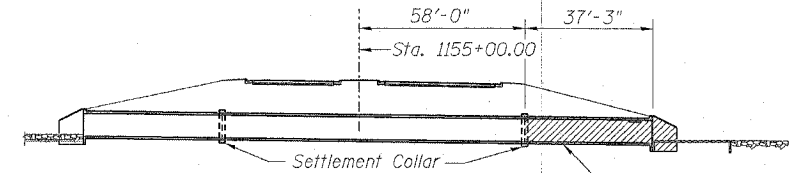
**HALF LONG. SECTION**  
Showing bars in Center Wall



**SECTION THRU BARREL**  
Near downstream end

**NOTCH DETAIL**

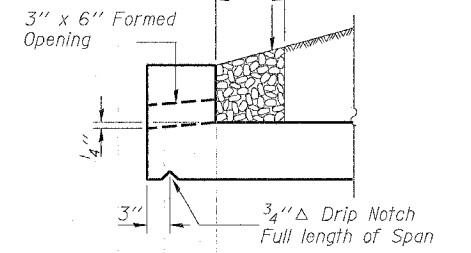
**LONGITUDINAL SECTION**  
Wingwall not shown



**KEY ELEVATION**

Looking east along  $\bar{C}$  culvert

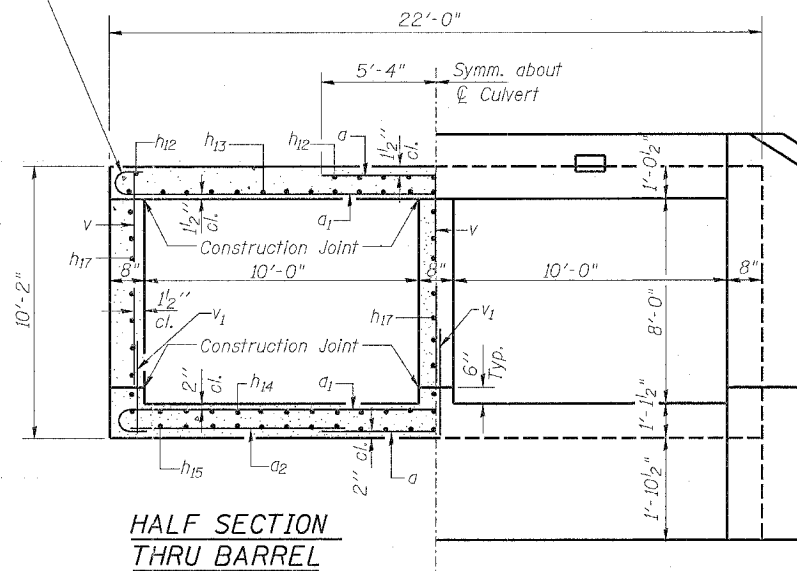
Coarse aggregate full length of headwall. To be placed by Grading Contractor. Cost included with Concrete Box Culverts.



**AT DOWNSTREAM END DRAIN DETAIL**

**PHOEBE NESTING SITE DETAILS**

Tilt hook of  $a_1$  bars if necessary for 1/2 inch min. cl.

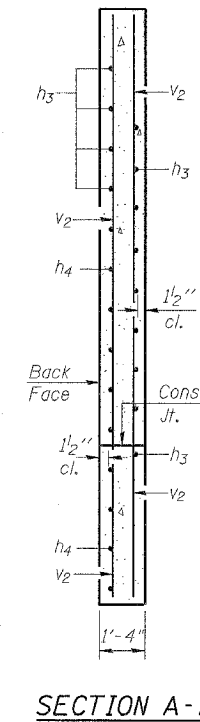


**HALF SECTION THRU BARREL**

**HALF END ELEVATION**

**BILL OF MATERIAL SOUTH SECTION**

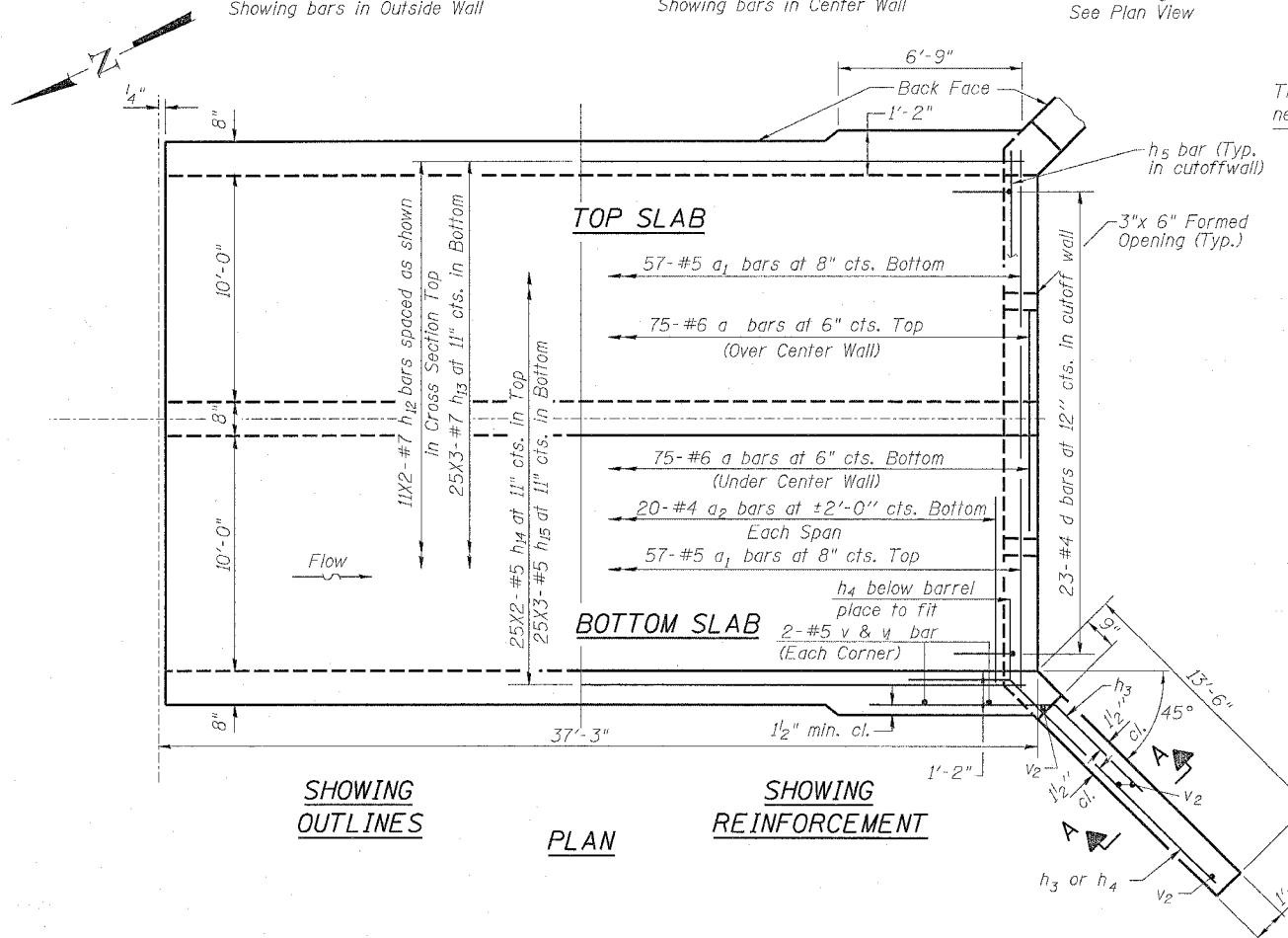
Bar	No.	Size	Length	Shape
a	150	#6	10'-8"	—
a <sub>1</sub>	114	#5	22'-10"	—
a <sub>2</sub>	40	#4	6'-10"	—
d	23	#4	4'-6"	—
h <sub>3</sub>	26	#9	8'-0"	—
h <sub>4</sub>	20	#9	16'-9"	—
h <sub>5</sub>	5	#6	21'-8"	—
h <sub>12</sub>	22	#7	19'-9"	—
h <sub>13</sub>	75	#7	14'-2"	—
h <sub>14</sub>	50	#5	19'-3"	—
h <sub>15</sub>	75	#5	13'-5"	—
h <sub>17</sub>	48	#6	19'-5"	—
v	184	#5	8'-2"	—
v <sub>1</sub>	184	#5	3'-4"	—
v <sub>2</sub>	8	#4	12'-6"	—
Concrete Box Culverts			Cu. Yd.	106.8
Reinforcement Bars			Pound	16,170



**SECTION A-A**

**CULVERT DETAILS AND SECTION**

52ND AVENUE EXTENSION  
OVER AN UNNAMED STREAM  
FAU ROUTE 5822 SECTION I-3  
ROCK ISLAND COUNTY  
STATION 1155+00  
STRUCTURE NO. 081-2035



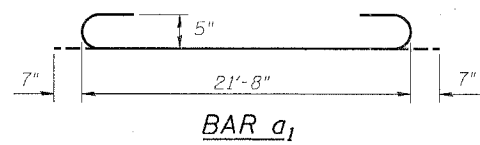
**SHOWING OUTLINES**

**PLAN**

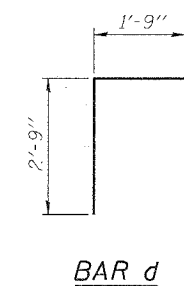
**SHOWING REINFORCEMENT**

**Lap Length**

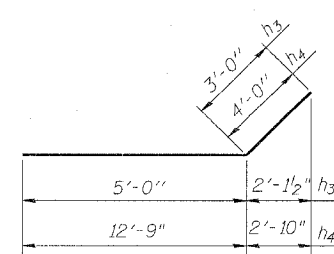
- #5 Bar 1'-8"
- #6 Bar 2'-0"
- #7 Bar 2'-9"



**BAR a<sub>1</sub>**



**BAR d**



**BARS h<sub>3</sub> & h<sub>4</sub>**

DESIGNED	JDC
CHECKED	BDF
DRAWN	RAP
CHECKED	BDF

DB-H-0 10-31-02