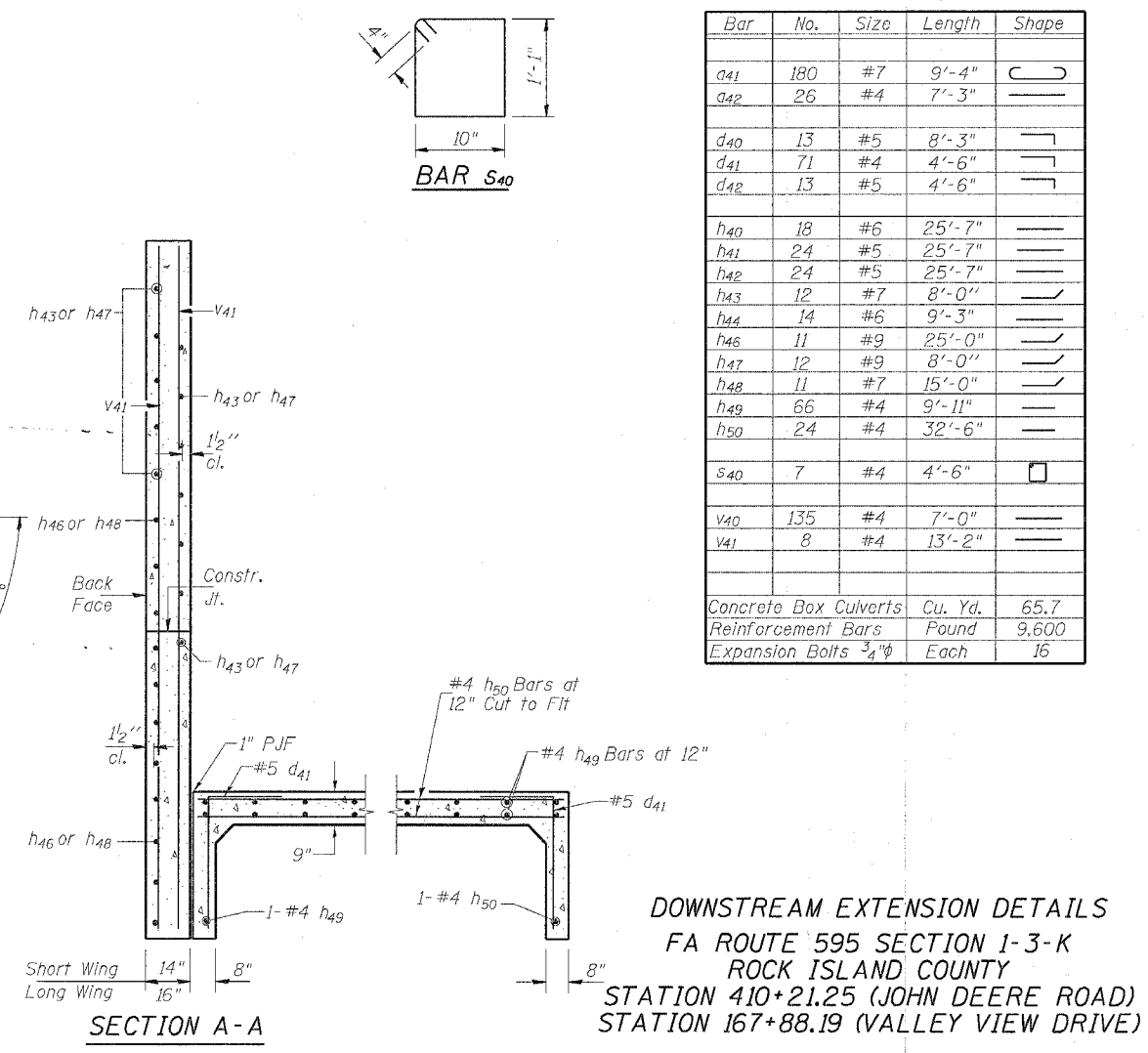
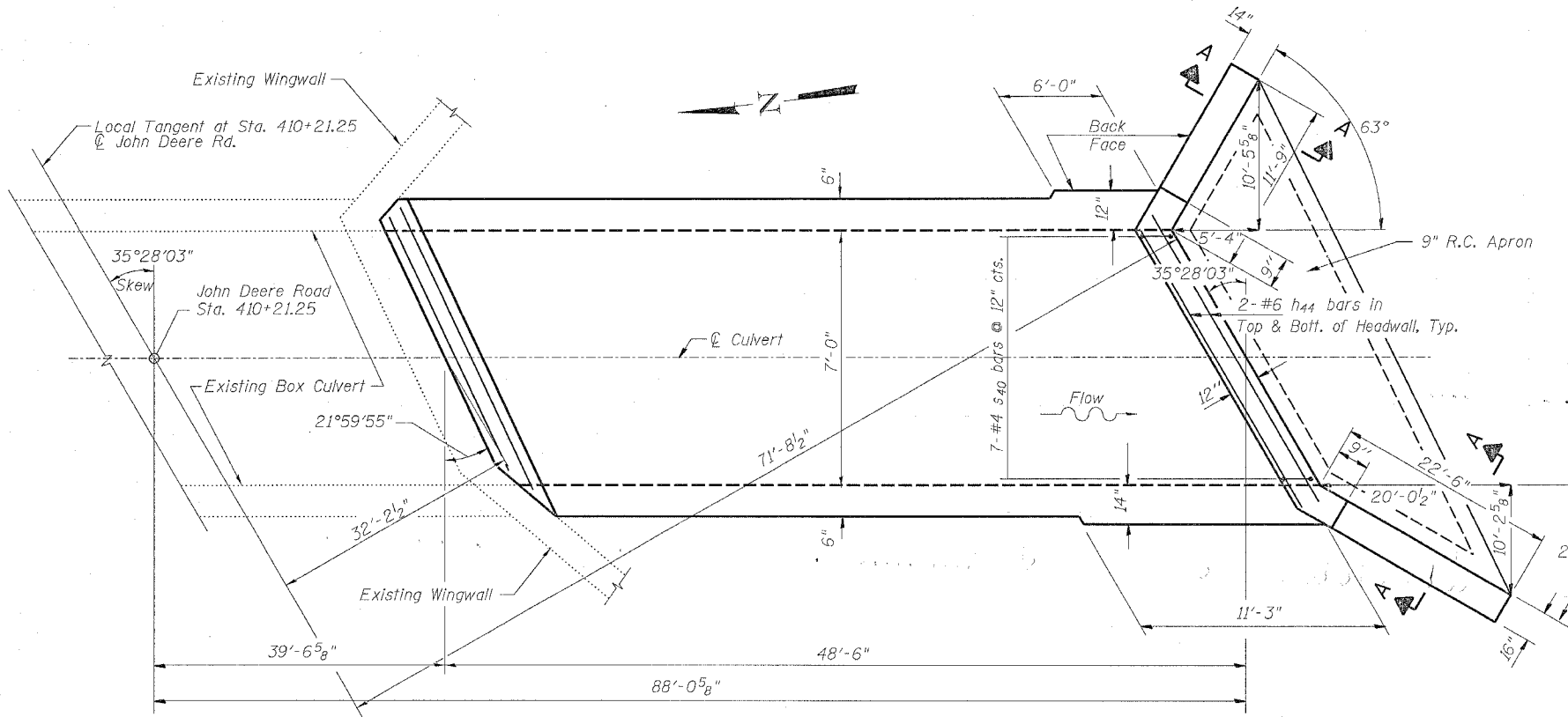
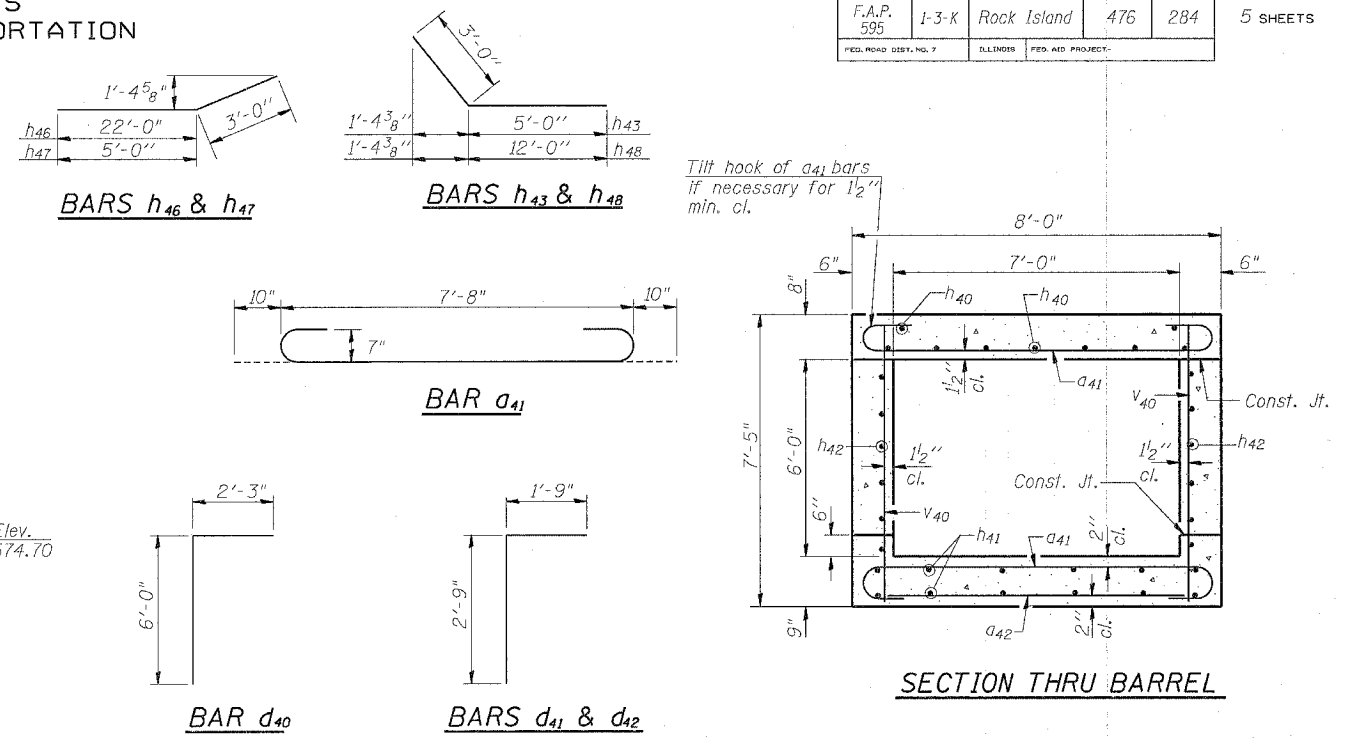
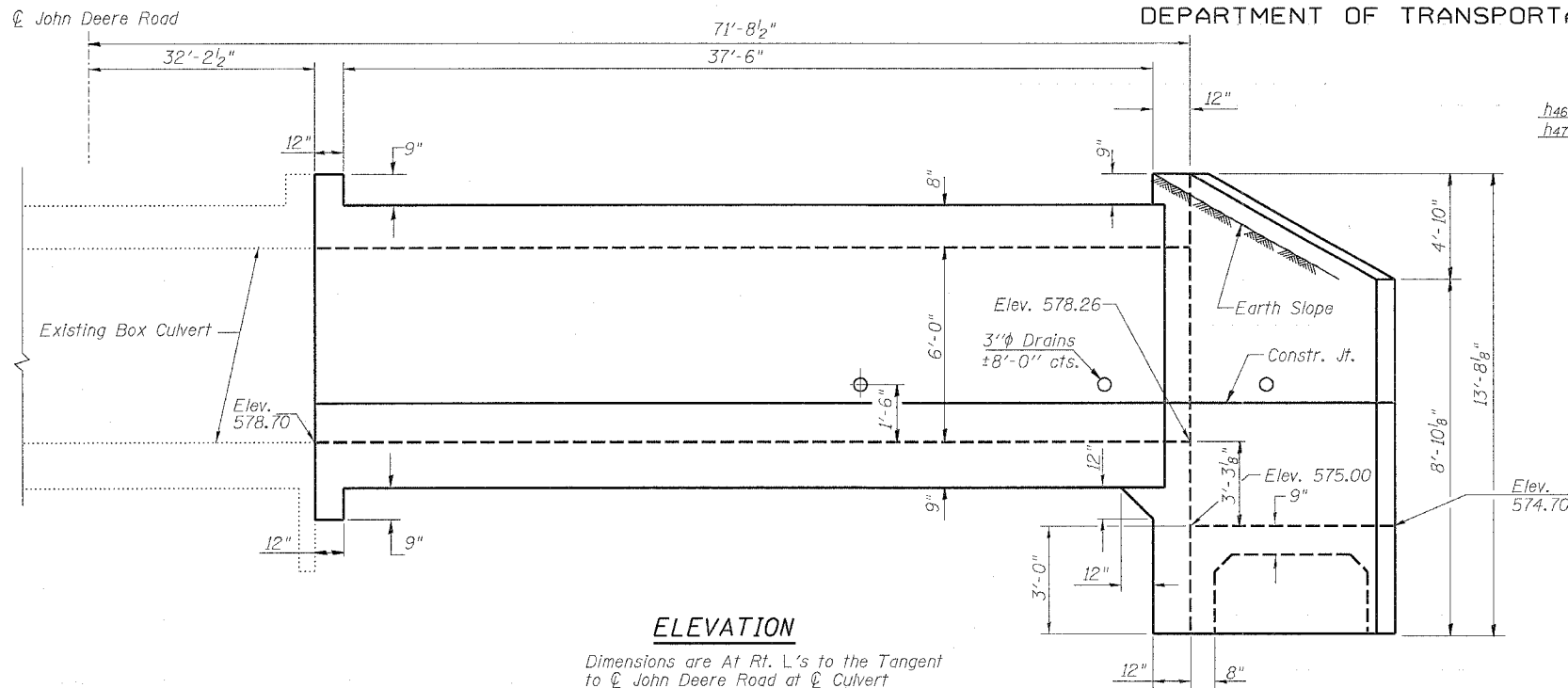


STATE OF ILLINOIS
DEPARTMENT OF TRANSPORTATION

ROUTE NO.	SECTION	COUNTY	TOTAL SHEETS	SHEET NO.
F.A.P. 595	I-3-K	Rock Island	476	284
FED. ROAD DIST. NO. 7		ILLINOIS	FED. AID PROJECT	

SHEET NO. 4
5 SHEETS



BILL OF MATERIAL

Bar No.	Size	Length	Shape
a ₄₁	180 #7	9'-4"	U
a ₄₂	26 #4	7'-3"	U
d ₄₀	13 #5	8'-3"	L
d ₄₁	71 #4	4'-6"	L
d ₄₂	13 #5	4'-6"	L
h ₄₀	18 #6	25'-7"	—
h ₄₁	24 #5	25'-7"	—
h ₄₂	24 #5	25'-7"	—
h ₄₃	12 #7	8'-0"	—
h ₄₄	14 #6	9'-3"	—
h ₄₆	11 #9	25'-0"	—
h ₄₇	12 #9	8'-0"	—
h ₄₈	11 #7	15'-0"	—
h ₄₉	66 #4	9'-11"	—
h ₅₀	24 #4	32'-6"	—
s ₄₀	7 #4	4'-6"	□
v ₄₀	135 #4	7'-0"	—
v ₄₁	8 #4	13'-2"	—

Concrete Box Culverts	Cu. Yd.	65.7
Reinforcement Bars	Pound	9,600
Expansion Bolts 3/4" φ	Each	16

NOTES

A distance of half the length of the wingwall but not less than six feet of the barrel shall be poured monolithically with the wingwalls.
Reinforcement Bars shall conform to the requirements of AASHTO M-31, M-42 or M-53, Grade 60.
Bars indicated thus 12 x 4-#5 etc. indicates 12 lines of bars with 4 lengths per line.
All construction joints shall be bonded.
Precast Culvert alternate is not allowed.

DESIGN STRESSES
f_y = 60,000 psi
f'c = 3,500 psi
LOADING HS 20-44 & ALT.

DESIGNED	JDC
CHECKED	BDF
DRAWN	RAP
CHECKED	BDF

SSB-H-L 6-1-2000