



SCALES:
 PLAN: 1"=20'
 PROFILE: 1"=20' H
 1"=5' V

BENCHMARKS	
DESCRIPTION	ELEVATION
BM #6: TOP OF SW BOLT ON FIRE HYDRANT AT THE NW CORNER OF WALNUT AND 3rd STREET.	760.64
BM #7: TOP OF SW BOLT ON FIRE HYDRANT AT THE NE CORNER OF WALNUT AND 2nd STREET.	751.59

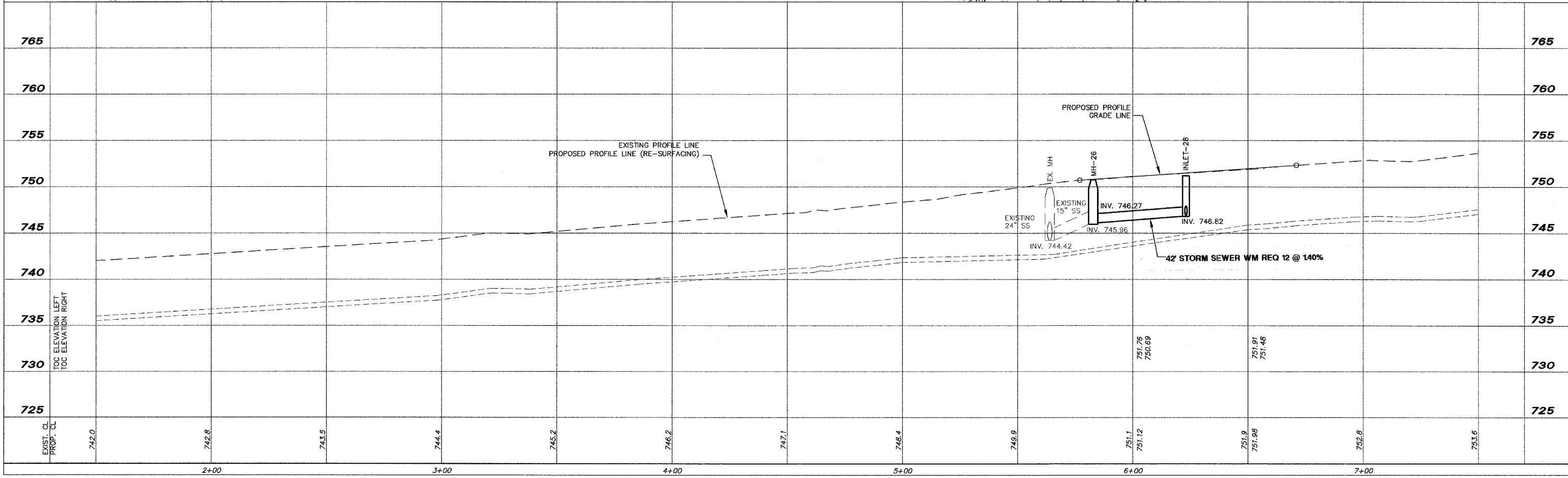
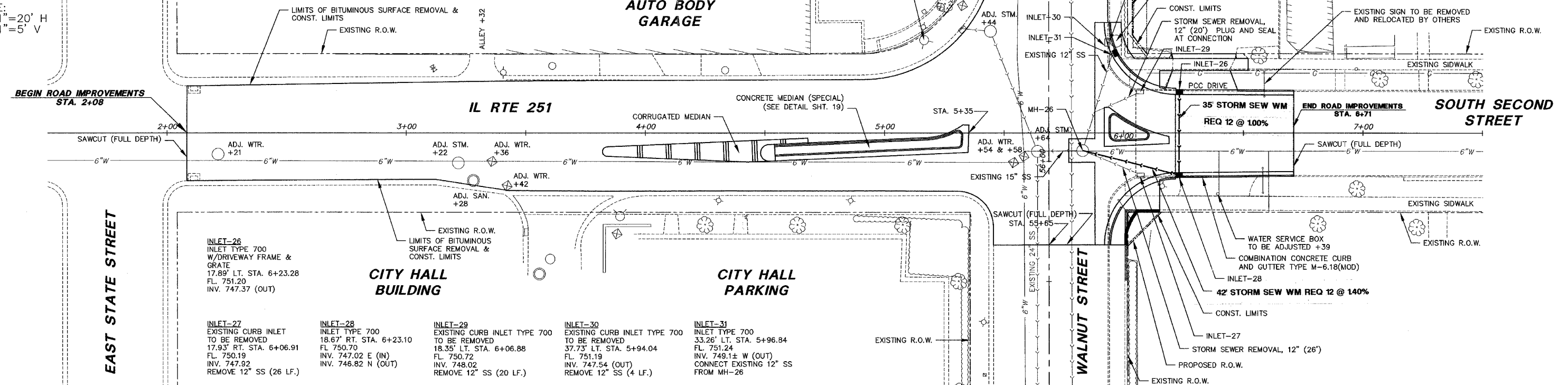
MH-26
 EXISTING STM SWR MH TO BE REMOVED & REPLACED WITH A REDUCED DEPTH MANHOLE, 5' DIA. WITH TYPE 1 FRAME & CLOSED LID 7.20' RT. STA. 5+82.82 EXISTING RIM 750.76 INV. 745.96 N (OUT) INV. 746.26 E (IN) INV. 746.27 S (IN) INV. 746.21 W (IN) PROPOSED RIM 750.76

MH-27
 EXISTING STORM SEWER MH TO BE REMOVED 38.32' LT. STA. 5+96.81 RIM 751.52 INV. 748.97 (OUT) INV. 749.07 (IN) REMOVE 12" SS FROM INLET-30

MATCH LINE STA 57+30
 SEE SHEET 11 OF 28

CONTRACT # 64A38		COUNTY		TOTAL SHEETS	SHEET NO.
FAP 303		WINNEBAGO		28	9
*140CS)TS-3					

64A38 28/9



REVISIONS		
NO.	ITEM	DATE

PLOTTING SCALE: 1"=1' DRAWN BY: BSL CHECKED BY: JWH DATE: DECEMBER 1, 2004	<p>McCLURE ENGINEERING ASSOCIATES, INC. 7282 Argus Drive Rockford, Illinois 6107 (815) 398-2332 FAX (815) 398-2496 Design Firm License: Illinois #184-000816</p>
---	--

UTILITY PLAN & PROFILE STA. 2+08- 6+71 CITY OF ROCKFORD		SHEET NO. 9 OF 28
WALNUT STREET (HES)		ROCKFORD, ILLINOIS
FILE NAME: H:\SecondSt-2004(HES)\UTLp1.dwg		JOB NUMBER: 04-28-04-045