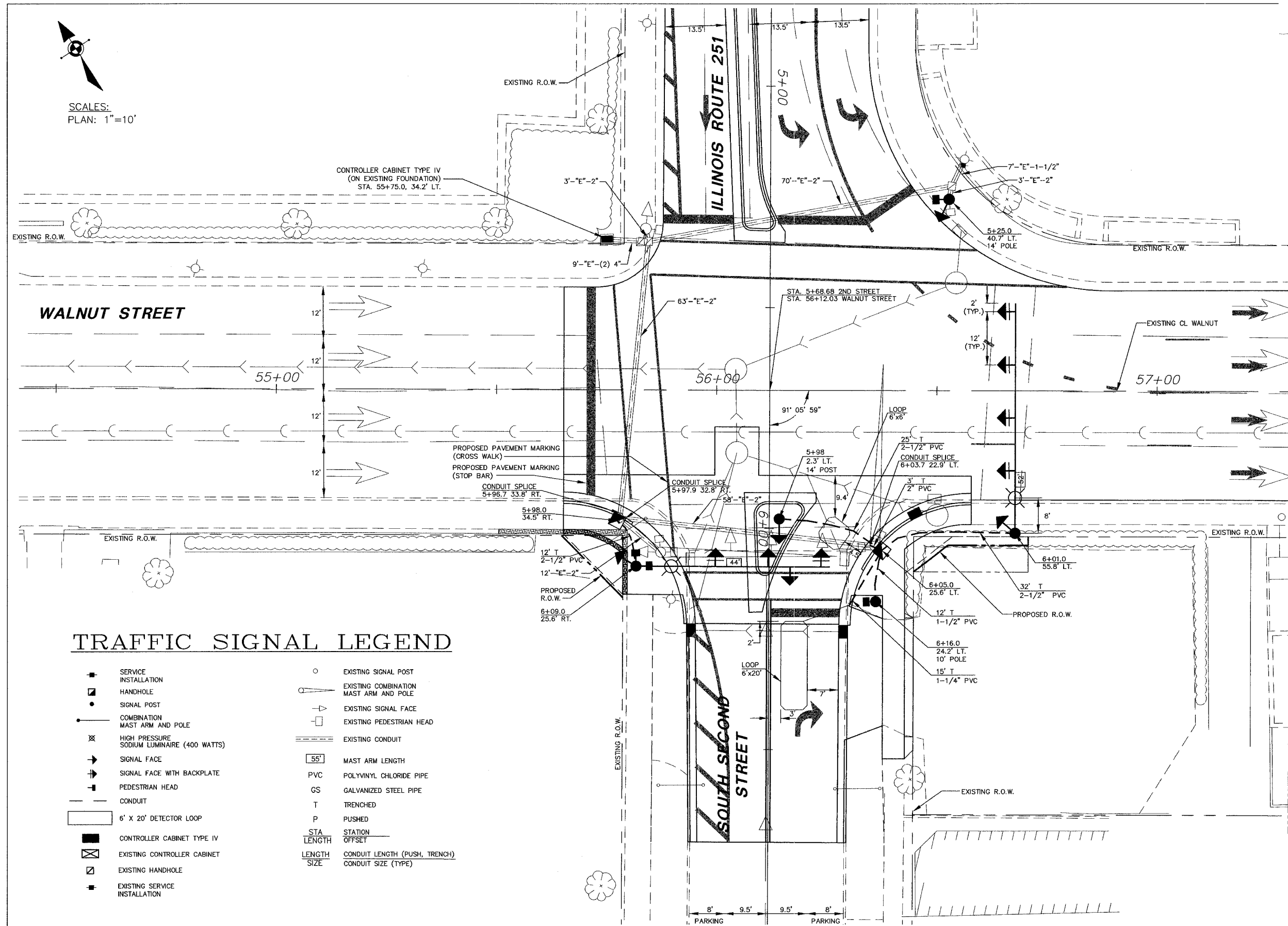


64A38
 28/16



SCALES:
 PLAN: 1"=10'



IL 251/ BUS 20

TRAFFIC SIGNAL LEGEND

- | | |
|----------------------------------------------|------------------------------------------|
| ■ SERVICE INSTALLATION | ○ EXISTING SIGNAL POST |
| ■ HANDHOLE | ○ EXISTING COMBINATION MAST ARM AND POLE |
| ● SIGNAL POST | → EXISTING SIGNAL FACE |
| ○ COMBINATION MAST ARM AND POLE | □ EXISTING PEDESTRIAN HEAD |
| ⊗ HIGH PRESSURE SODIUM LUMINAIRE (400 WATTS) | — EXISTING CONDUIT |
| → SIGNAL FACE | 55' MAST ARM LENGTH |
| → SIGNAL FACE WITH BACKPLATE | PVC POLYVINYL CHLORIDE PIPE |
| → PEDESTRIAN HEAD | GS GALVANIZED STEEL PIPE |
| — CONDUIT | T TRENCHED |
| 6' X 20' DETECTOR LOOP | P PUSHED |
| ■ CONTROLLER CABINET TYPE IV | STA STATION |
| ■ EXISTING CONTROLLER CABINET | LENGTH STATION OFFSET |
| ■ EXISTING HANDHOLE | LENGTH CONDUIT LENGTH (PUSH, TRENCH) |
| ■ EXISTING SERVICE INSTALLATION | SIZE CONDUIT SIZE (TYPE) |

REVISIONS		
NO.	ITEM	DATE

PLOTTING SCALE: 1"=1'
DRAWN BY: BSL
CHECKED BY: JWI
DATE: DECEMBER 1, 2004

McCLURE ENGINEERING ASSOCIATES, INC.
 7282 Argus Drive Rockford, Illinois 61107
 (815) 398-2332 FAX (815) 398-2496
 Design Firm License: Illinois #184-000816

TRAFFIC SIGNAL PLAN
 CITY OF ROCKFORD
 WALNUT STREET (HS)
 ROCKFORD, ILLINOIS
 FILE NAME: H:\SecondSt-2004\HES\Slgplan.dwg SEC. 140CS-TS-3 JOB NUMBER: 04-28-04-045

SHEET NO.
16 OF 28