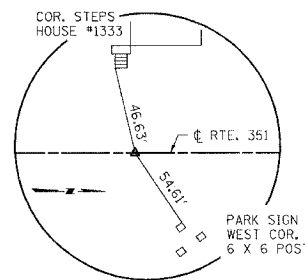
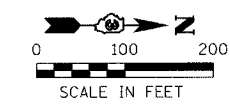


DESIGN		
INT.	DATE	REASON

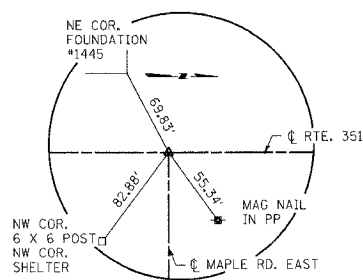
PLOTS & CHECKS			
INT.	DATE	NO.	REASON

CHECKS		
INT.	DATE	REASON

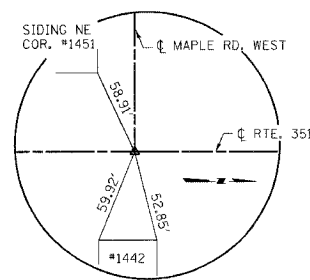
F.A.U. RTE.	SECTION	COUNTY	TOTAL SHEETS	SHEET NO.
6108	***	LASALLE	679	70
STA. _____ TO STA. _____				
FED. ROAD DIST. NO. ILLINOIS FED. AID PROJECT *** (70X, 71X)RS-1, (71X-VBR)DM CONTRACT NO. 66225				



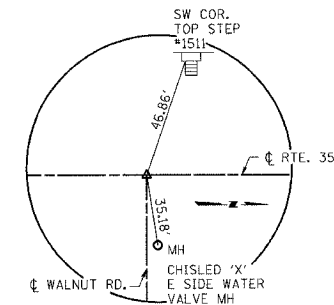
P.O.T. STA. 167+00



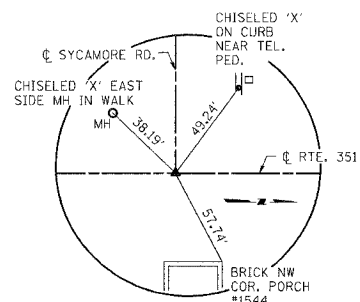
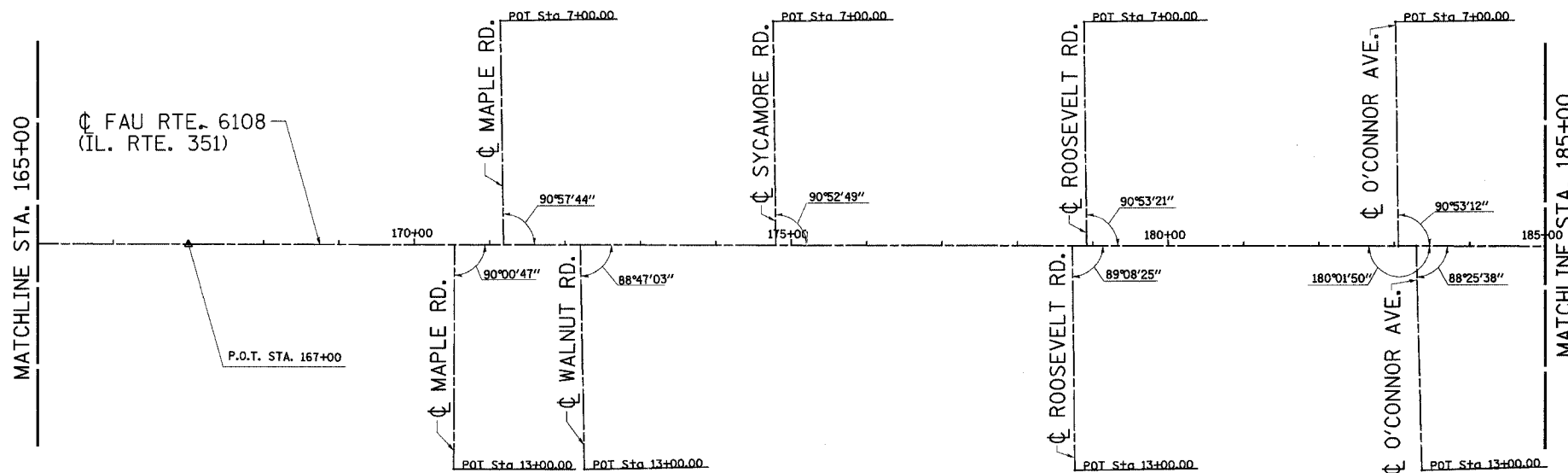
P.O.T. STA. 170+53.17 (IL RTE. 351) =
P.I. STA. 10+00.00 (MAPLE ROAD EAST)



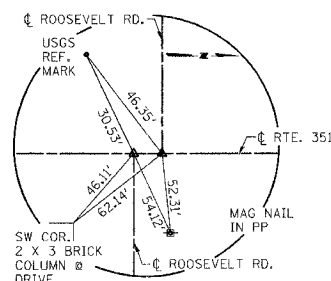
P.O.T. STA. 171+18.17 (IL RTE. 351) =
P.I. STA. 10+00.00 (MAPLE ROAD WEST)



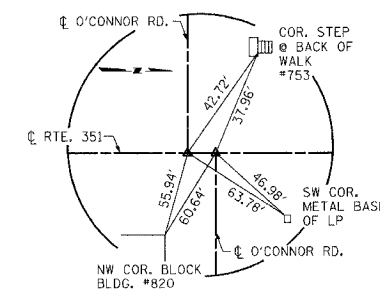
P.O.T. STA. 172+20.16 (IL RTE. 351) =
P.I. STA. 10+00.00 (WALNUT RD.)



P.O.T. STA. 174+79.52 (IL RTE. 351) =
P.I. STA. 10+00.00 (SYCAMORE RD.)



STATION EQUATION
P.O.T. STA. 178+72.81 (IL RTE. 351) =
P.I. STA. 10+00.00 (ROOSEVELT RD. EAST)
P.O.T. STA. 178+92.09 (IL RTE. 351) =
P.I. STA. 10+00.00 (ROOSEVELT RD. WEST)



STATION EQUATION
P.I. STA. 183+05.54 (IL RTE. 351) =
P.I. STA. 10+00.00 (O'CONNOR RD. WEST)
P.O.T. STA. 183+24.08 (IL RTE. 351) =
P.I. STA. 10+00.00 (O'CONNOR RD. EAST)

REVISIONS	
NAME	DATE

NOTE: ALL CENTERLINE CONTROL POINTS ARE MAG. NAILS UNLESS OTHERWISE NOTED.

ILLINOIS DEPARTMENT OF TRANSPORTATION
ALIGNMENT SCHEMATIC & TIES

FAU RTE. 6108 (IL RTE. 351)
SEC. (70X, 71X)RS-1, (71X-VBR)DM
LASALLE COUNTY

SCALE: VERT. _____
HORIZ. _____
DATE 11/16/00-PAM

DRAWN BY: MABUS
DESIGNED BY: KUNTZMAN
CHECKED BY: COLBROOK

GREENE & BRADFORD, INC.
CONSULTING ENGINEERS
2300 WEST WASHINGTON ST. DEPT. 100
SPRINGFIELD, ILLINOIS 62761
PHONE: (217) 243-8811 FAX: (217) 243-8812
WWW: WWW.GREENE-AND-BRADFORD.COM

COMPUTER FILE NO.
SCHEMATIC_C
PROJECT 01194.B.S
05/07/03-JLJ