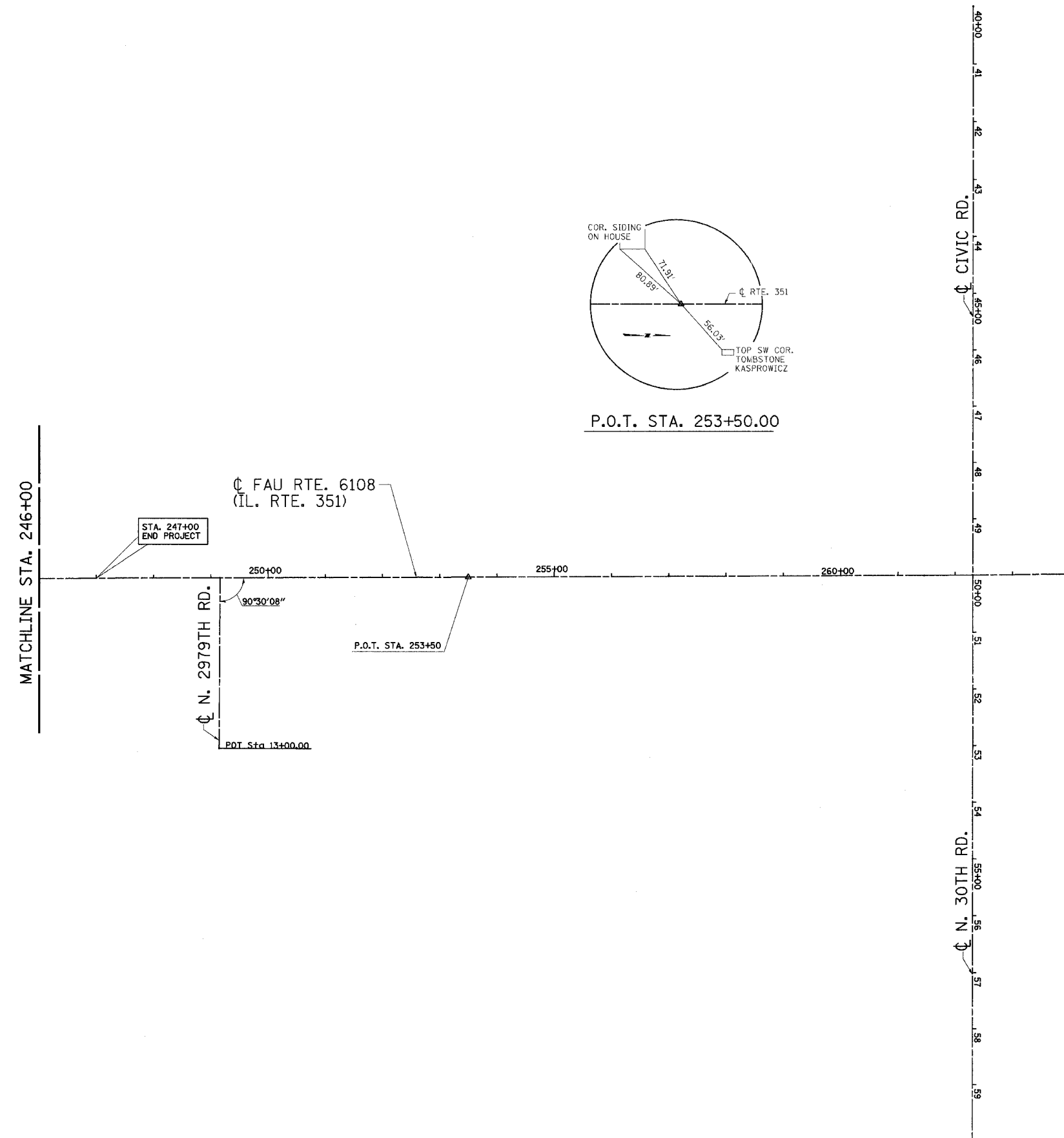
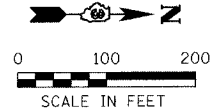


DESIGN		
INT.	DATE	REASON

PLOTS & CHECKS			
INT.	DATE	NO.	REASON

CHECKS		
INT.	DATE	REASON

F.A.U. RTE.	SECTION	COUNTY	TOTAL SHEETS	SHEET NO.
6108	...	LA SALLE	679	73
STA.		TO STA.		
FED. ROAD DIST. NO.		ILLINOIS FED. AID PROJECT		
... (70X, 71X)RS-1, (71X-VBR)DM				
CONTRACT NO. 66225				



REVISIONS	
NAME	DATE

NOTE: ALL CENTERLINE CONTROL POINTS ARE MAG. NAILS UNLESS OTHERWISE NOTED.

ILLINOIS DEPARTMENT OF TRANSPORTATION

### ALIGNMENT SCHEMATIC & TIES

FAU RTE. 6108 (IL. RTE. 351)  
SEC. (70X, 71X)RS-1, (71X-VBR)DM  
LASALLE COUNTY

SCALE: VERT.     DRAWN BY: MABUS  
              HORIZ.     DESIGNED BY: KUNTZMAN  
DATE 11/16/00-PAM     CHECKED BY: COLBROOK

**GREENE & BRADFORD, INC.**     COMPUTER FILE NO.  
CONSULTING ENGINEERS     OF SPRINGFIELD     SCHEMATIC.F  
200 CONVENT ROAD     PROJECT 01194.B.S  
CHICAGO, ILLINOIS 60607     PROJECT MANAGER  
(312) 527-8444     FAX (312) 527-8111     www.greenebro.com     05/07/03-JLJ

IDOTPL-100 1"=100' 8/07/00

FAU RTE. 6108 (IL. RTE. 351) LASALLE CO.