

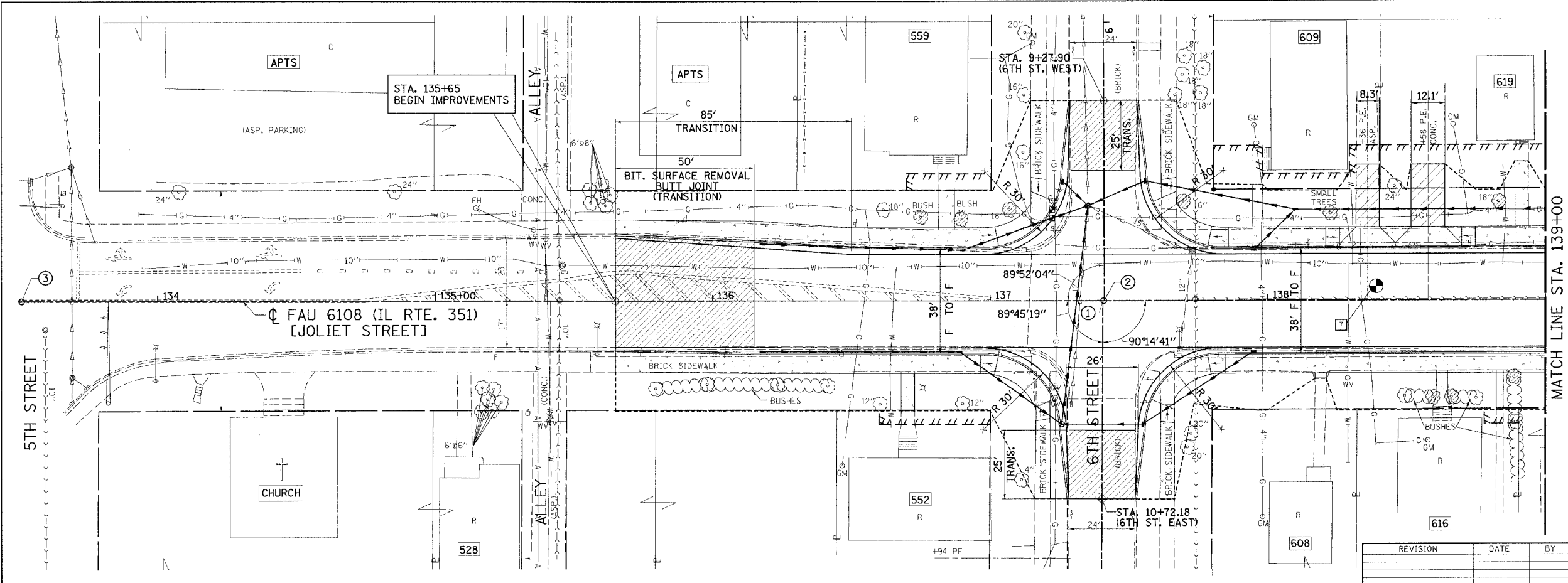
DESIGN	INT.	DATE	REASON

PLAN	DATE	BY

PLOTS & CHECKS	INT.	DATE	NO.	REASON

PROFILE	DATE	BY

CHECKS	INT.	DATE	REASON



F.A.U. RTE.	SECTION	COUNTY	TOTAL SHEETS	SHEET NO.
6108	***	LA SALLE	679	87
STA. 134+00		TO STA. 139+00		
FED. ROAD DIST. NO.	ILLINOIS	FED. AID PROJECT		
*** (70X, 71XRS-1, (71X-VBR)DM CONTRACT NO. 66225				

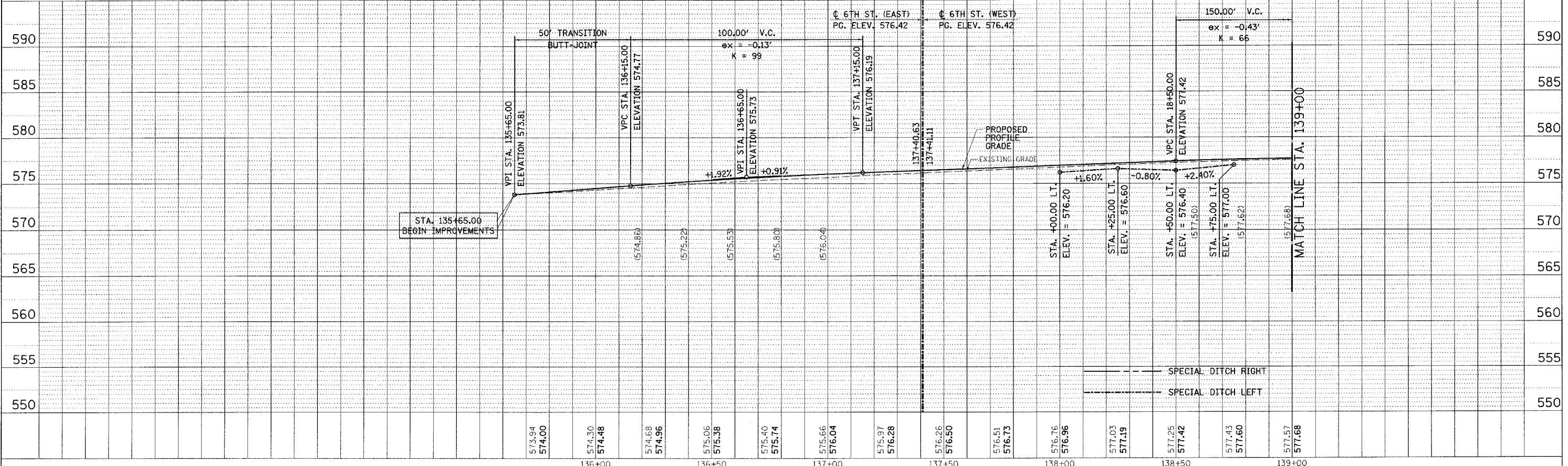
- ① STA. 137+40.63 (IL. RTE. 351) = STA. 10+00 (6TH ST. EAST)
- ② STA. 137+41.11 (IL. RTE. 351) = STA. 10+00 (6TH ST. WEST)
- ③ STA. 133+51.00

PAVEMENT CORE
 1 1/2" PCC (GOOD)
 3 3/4" BIT. (GOOD)

REVISION DATE BY

GREENE & BRADFORD, INC.
 CIVIL ENGINEERS
 1010 N. 1ST ST., SUITE 100, LA SALLE, IL 62850
 (618) 236-1234 FAX (618) 236-1235
 www.greenesandbradford.com

COMPUTER FILE NO. PLN351A-01
 PROJECT: 01194_B.S
 04/01/04-RPB



C:\PLOT\910506.HC\FAU04.DWG: 12/16/2004 1:30:12 PM user = gregj