

DESIGN		
INT.	DATE	REASON

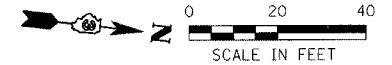
PLAN		
NO.	DATE	BY

PLOTS & CHECKS			
INT.	DATE	NO.	REASON

PROFILE		
NO.	DATE	BY

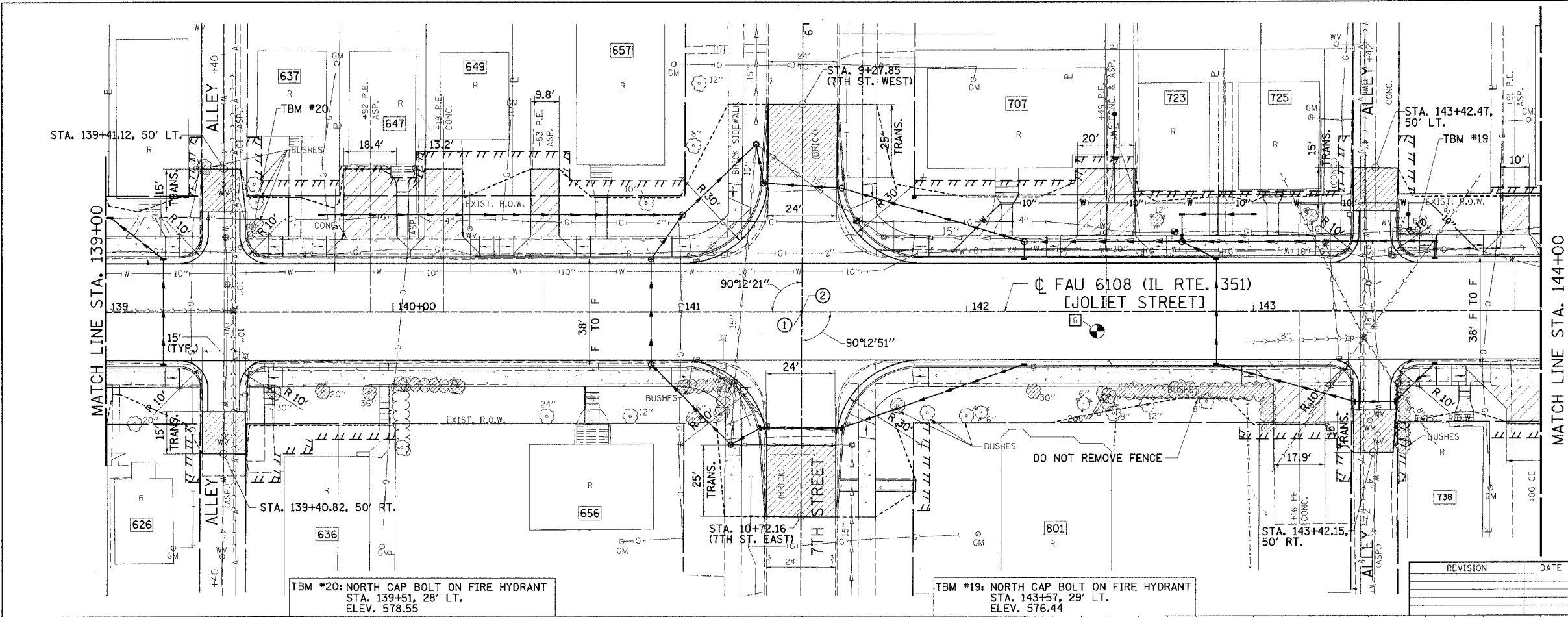
CHECKS		
INT.	DATE	REASON

F.A.U. RTE.	SECTION	COUNTY	TOTAL SHEETS	SHEET NO.
6108	***	LA SALLE	679	88
STA.	139+00	TO STA.	144+00	
FED. ROAD DIST. NO.	ILLINOIS	FED. AID PROJECT		
*** (70X,71X)RS-1, (71X-VBR)DM CONTRACT NO. 66225				



- ① STA. 141+42.44 (IL. RTE. 351) = STA. 10+00 (7TH ST. EAST)
- ② STA. 141+42.56 (IL. RTE. 351) = STA. 10+00 (7TH ST. WEST)

⑥ PAVEMENT CORE
 7 1/2" PCC (GOOD)
 4 1/2" BIT. (GOOD)



TBM #20: NORTH CAP BOLT ON FIRE HYDRANT
 STA. 139+51, 28' LT.
 ELEV. 578.55

TBM #19: NORTH CAP BOLT ON FIRE HYDRANT
 STA. 143+57, 29' LT.
 ELEV. 576.44

REVISION	DATE	BY

GREENE & BRADFORD, INC.
 CONSULTING ENGINEERS
 1015 S. 10TH ST. SUITE 201, LA SALLE, ILL. 61301
 (815) 288-1111 FAX (815) 288-1112
 © 1991 GREENE & BRADFORD, INC. COMPANY LICENSE NO. 04/01/04-RPB

COMPUTER FILE NO.
 PLN351A-02
 PROJECT: 01194.B.S

