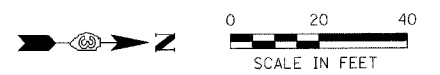


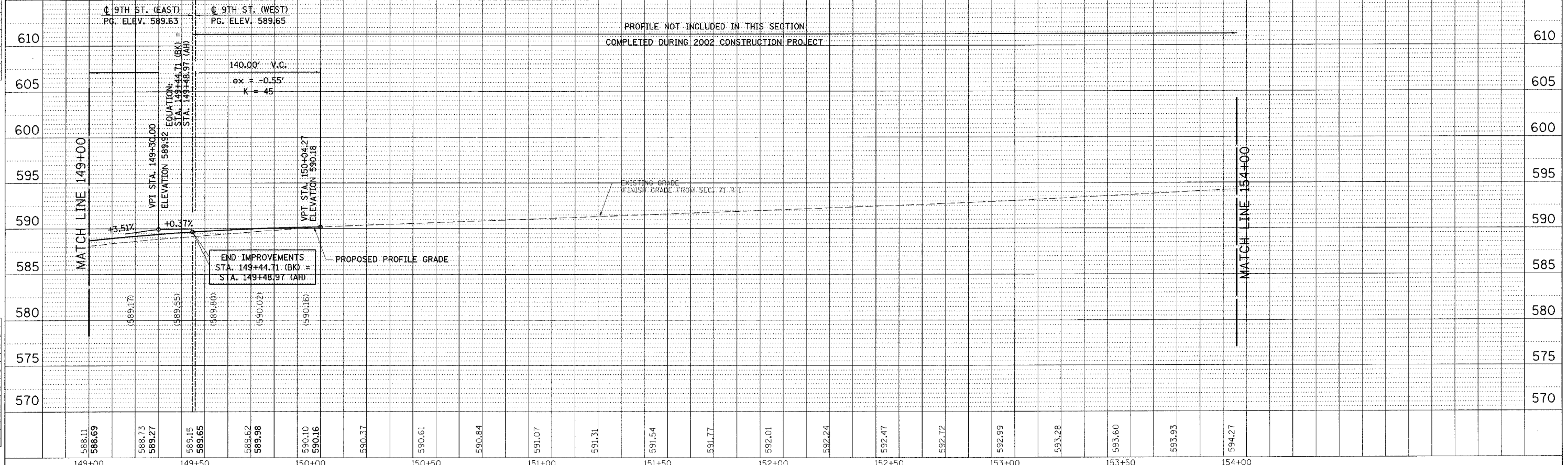
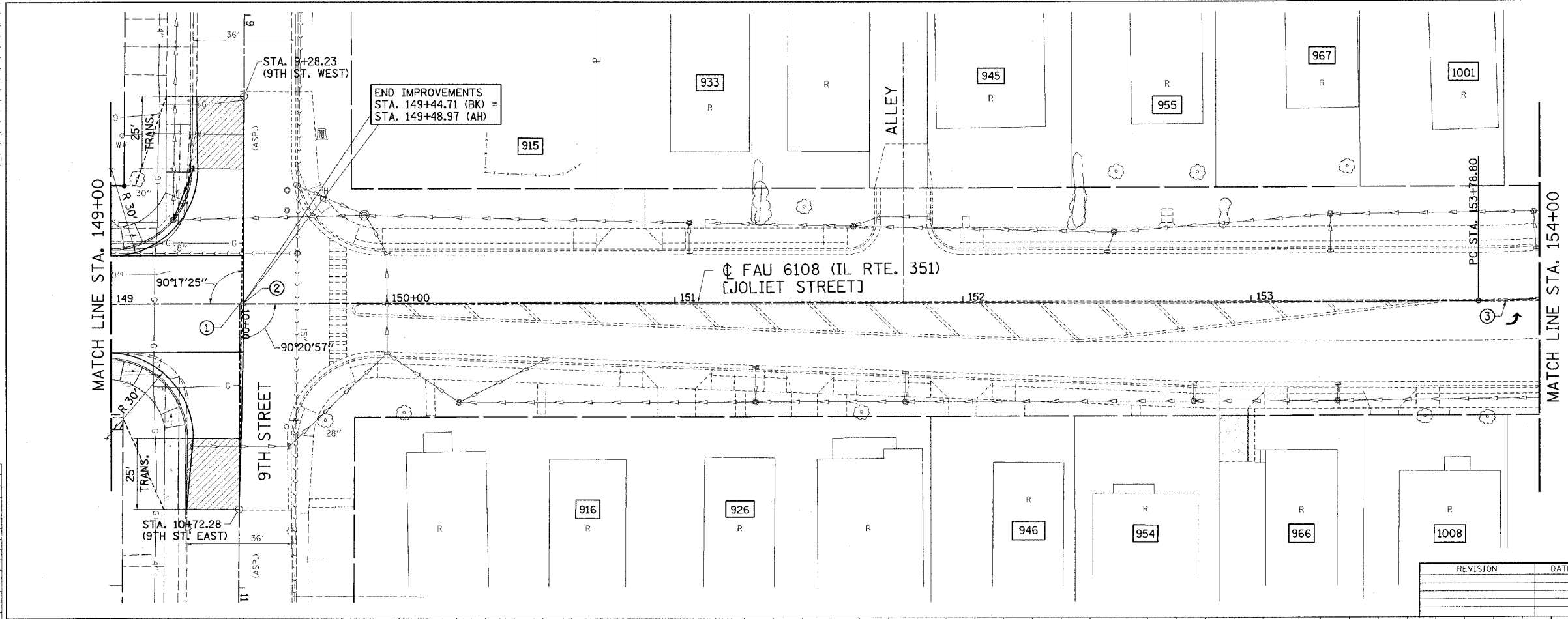
F.A.U. RTE. 6108	SECTION ***	COUNTY LA SALLE	TOTAL SHEETS 679	SHEET NO. 90
STA. 149+00	TO STA. 154+00			
FED. ROAD DIST. NO. ILLINOIS *** (70X, 71X)RS-1, (71X-VBR)DM CONTRACT NO. 66225			FED. AID PROJECT	



- STATION EQUATION  
 STA. 149+44.71 (BK) =  
 STA. 149+48.97 (AH) =  
 STA. 10+00 (9TH ST. EAST)
- STA. 149+50.19 (IL. RTE. 351) =  
 STA. 10+00 (9TH ST. WEST)
- CURVE DATA  
 P.I. STA. = 154+46.70  
 $\Delta = 23^{\circ}25'59''$   
 $D = 17^{\circ}30'01''$   
 $T = 67.90'$   
 $L = 133.90'$   
 $R = 327.40'$   
 $E = 6.97'$   
 P.C. STA. = 153+78.80  
 P.T. STA. = 155+12.70

NOTE: HEAVY DASH INDICATES 2002 CONSTRUCTION PROJECT.

REVISION	DATE	BY	COMPUTER FILE NO.
			PLN351B-01
			PROJECT: 01194-B.S 03/16/04-RPB



DESIGN	INT. DATE	REASON

PLAN	DATE	BY

PLOTS & CHECKS	INT. DATE	NO.	REASON

PROFILE	DATE	BY

CHECKS	INT. DATE	REASON