

DESIGN	DATE	REASON

PLAN	DATE	BY

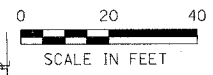
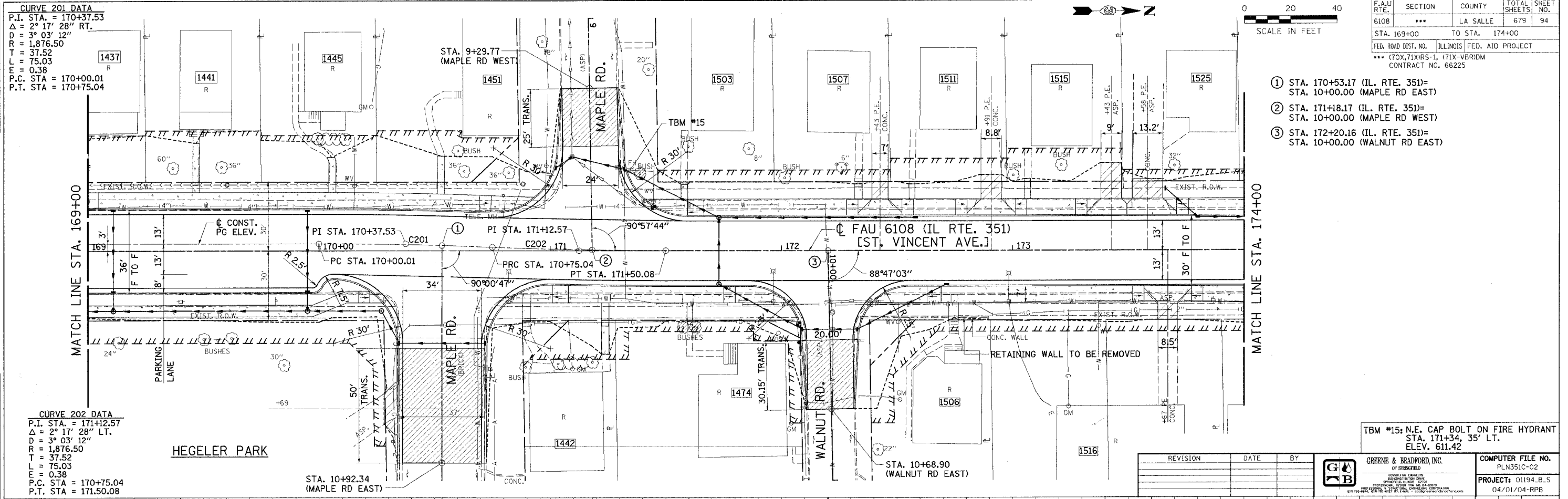
PLOTS & CHECKS	DATE	NO.	REASON

PROFILE	DATE	BY

CHECKS	DATE	REASON

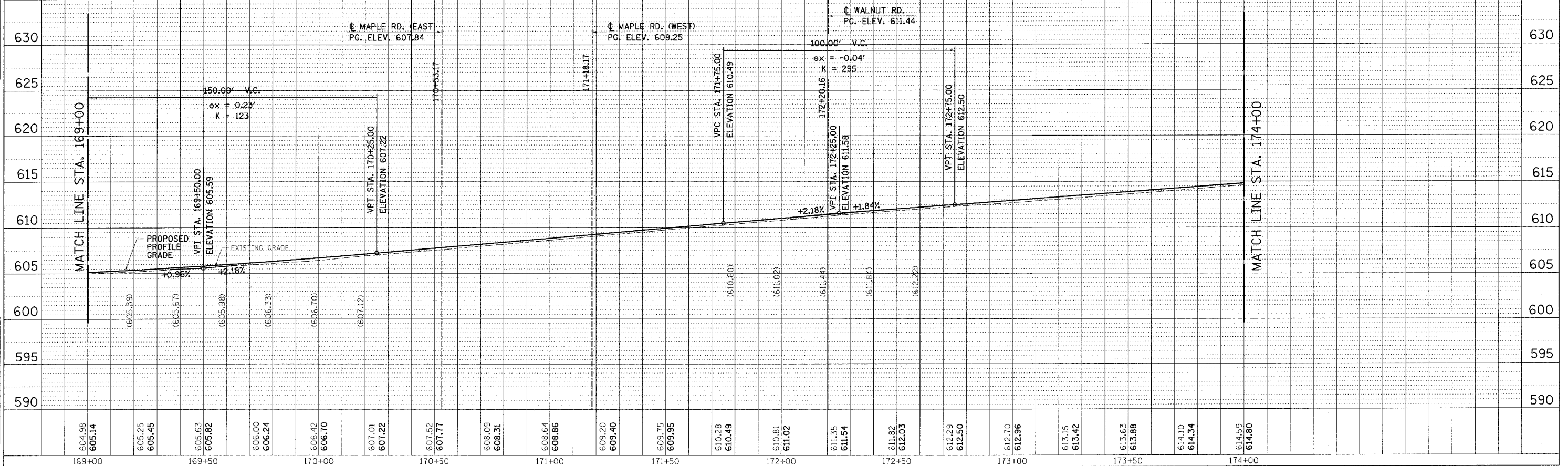
CURVE 201 DATA
 P.I. STA. = 170+37.53
 $\Delta = 2^\circ 17' 28''$ RT.
 $D = 3^\circ 03' 12''$
 $R = 1,876.50$
 $T = 37.52$
 $L = 75.03$
 $E = 0.38$
 P.C. STA. = 170+00.01
 P.T. STA. = 170+75.04

CURVE 202 DATA
 P.I. STA. = 171+12.57
 $\Delta = 2^\circ 17' 28''$ LT.
 $D = 3^\circ 03' 12''$
 $R = 1,876.50$
 $T = 37.52$
 $L = 75.03$
 $E = 0.38$
 P.C. STA. = 170+75.04
 P.T. STA. = 171.50.08



F.A.U. RTE.	SECTION	COUNTY	TOTAL SHEETS	SHEET NO.
6108	...	LA SALLE	679	94
STA. 169+00		TO STA. 174+00		
FED. ROAD DIST. NO. [ILLINOIS] FED. AID PROJECT				
** (70X, 71X)RS-1, (71X-VBR)DM CONTRACT NO. 66225				

- ① STA. 170+53.17 (IL. RTE. 351)= STA. 10+00.00 (MAPLE RD EAST)
- ② STA. 171+18.17 (IL. RTE. 351)= STA. 10+00.00 (MAPLE RD WEST)
- ③ STA. 172+20.16 (IL. RTE. 351)= STA. 10+00.00 (WALNUT RD EAST)



100TEPP - 1st 8/25/98

FAU RTE. 6108 (IL RTE. 351) LA SALLE CO.