

| F.A.U. RTE. | SECTION | COUNTY | TOTAL SHEETS | SHEET NO. |
|-------------|---------|----------|--------------|-----------|
| 6108 | *** | LA SALLE | 679 | 197 |

N.E. 1/4 OF SEC. 15, T.33N., R.1E. OF THE 3RD P.M.

ORIGINAL TOWN PLAT BK. H, PAGE 19 BLOCK 35 SCHERMERHORN & WARREN RESUB. IN BLOCK 35 & 50 PLAT BK. L, PG. 44

BLOCK 50

| PARCEL | POINT TO POINT | BEARING | DISTANCE |
|------------|----------------|---------------|----------|
| 30W0008 TE | 6 TO 1 | S.83°55'43"W. | 20.45' |
| | 1 TO 2 | N.6°18'28"W. | 5.00' |
| | 2 TO 3 | N.83°55'43"E. | 15.00' |
| | 3 TO 4 | N.6°18'28"W. | 27.14' |
| | 4 TO 5 | N.83°55'43"E. | 5.42' |
| 30W0010 TE | 13 TO 12 | S.83°55'43"W. | 15.40' |
| | 12 TO 14 | N.6°18'28"W. | 30.14' |
| | 14 TO 15 | N.83°55'43"E. | 15.37' |
| 30W0009 TE | 13 TO 5 | S.6°21'40"E. | 30.13' |
| | 5 TO 7 | S.83°55'43"W. | 10.42' |
| | 7 TO 8 | N.6°18'28"W. | 18.00' |

| PARCEL | POINT TO POINT | BEARING | DISTANCE |
|------------|----------------|---------------|----------|
| 30W0011 TE | 19 TO 15 | S.6°21'40"E. | 60.27' |
| | 15 TO 14 | S.83°55'43"W. | 15.37' |
| | 14 TO 16 | N.6°18'28"W. | 20.00' |
| | 16 TO 17 | N.83°41'32"E. | 10.00' |
| 30W0012 TE | 17 TO 18 | N.6°18'28"W. | 40.23' |
| | 18 TO 19 | N.83°55'43"E. | 5.31' |
| | 20 TO 21 | S.83°55'43"W. | 5.24' |
| | 21 TO 22 | N.6°18'28"W. | 56.28' |
| 30W0014 TE | 22 TO 23 | S.83°41'32"E. | 8.00' |
| | 23 TO 24 | N.6°18'28"W. | 10.08' |
| | 24 TO 25 | N.83°53'02"E. | 13.18' |
| | 25 TO 20 | S.6°21'40"E. | 66.34' |

| PARCEL | POINT TO POINT | BEARING | DISTANCE |
|------------|----------------|---------------|----------|
| 30W0013 TE | 33A TO 30A | S.83°55'43"W. | 1.10' |
| | 30A TO 30 | N.6°18'28"W. | 5.00' |
| | 30 TO 31 | S.83°41'32"E. | 19.00' |
| | 31 TO 32 | N.6°18'28"W. | 5.08' |
| | 32 TO 33 | N.83°55'43"E. | 20.09' |

| PARCEL | POINT TO POINT | BEARING | DISTANCE |
|------------|----------------|---------------|----------|
| 30W0015 TE | 29 TO 28 | S.83°53'02"W. | 1.14' |
| | 28 TO 30A | N.6°18'28"W. | 35.6' |
| | 30A TO 33A | N.83°55'43"E. | 1.10' |
| | 33A TO 29 | S.6°21'40"E. | 35.1' |
| 30W0016 TE | 37 TO 34 | S.6°21'40"E. | 5.57' |
| | 34 TO 35 | S.83°55'43"W. | 20.08' |
| | 35 TO 36 | N.6°18'28"W. | 5.49' |
| | 36 TO 37 | N.83°41'32"E. | 20.07' |
| 30W0017 TE | 41 TO 38 | S.6°21'40"E. | 50.00' |
| | 38 TO 39 | S.83°55'43"W. | 2.05' |
| | 39 TO 40 | N.6°18'28"W. | 50.00' |
| | 40 TO 41 | N.83°55'43"E. | 2.00' |
| 30W0018 TE | 42 TO 41 | S.6°21'40"E. | 70.54' |
| | 41 TO 40A | S.83°55'43"W. | 1.00' |
| | 40 TO 43 | N.6°18'28"W. | 70.54' |
| | 43 TO 42 | N.83°55'43"E. | 0.94' |

SCHERMERHORN & WARREN RESUB. IN BLOCK 35 & 50 PLAT BK. L, PG. 44

PARCEL 30W0008
RICHARD A. CINOTTO, et ux.
TOTAL HOLDING = 3,541 SQ. FT.±
TEMPORARY EASEMENT = 250 SQ. FT.±
PURPOSE: SIDEWALK CONSTRUCTION, GRADING

PARCEL 30W0012
JAMES A. McPHERAN, et al.
TOTAL HOLDING = 3,322 SQ. FT.±
TEMPORARY EASEMENT = 426 SQ. FT.±
PURPOSE: SIDEWALK & DRIVEWAY RECONSTRUCTION, GRADING

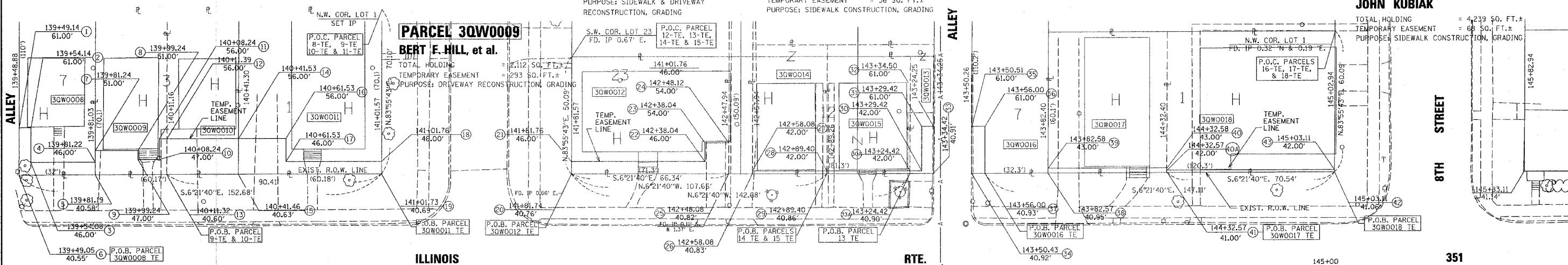
PARCEL 30W0014
YUNJIN ZHANG, et ux.
TOTAL HOLDING = 1,725 SQ. FT.±
TEMPORARY EASEMENT = 36 SQ. FT.±
PURPOSE: SIDEWALK CONSTRUCTION, GRADING

PARCEL 30W0015
GREGORY BLOCK
TOTAL HOLDING = 1,755 SQ. FT.±
TEMPORARY EASEMENT = 39 SQ. FT.±
PURPOSE: SIDEWALK CONSTRUCTION, GRADING

PARCEL 30W0016
ORVILLE RAINES
TOTAL HOLDING = 3,541 SQ. FT.±
TEMPORARY EASEMENT = 111 SQ. FT.±
PURPOSE: GRADING & SHAPING

PARCEL 30W0017
EMILY RAINES, LIFE ESTATE
TOTAL HOLDING = 3,005 SQ. FT.±
TEMPORARY EASEMENT = 101 SQ. FT.±
PURPOSE: SIDEWALK & DRIVEWAY RECONSTRUCTION

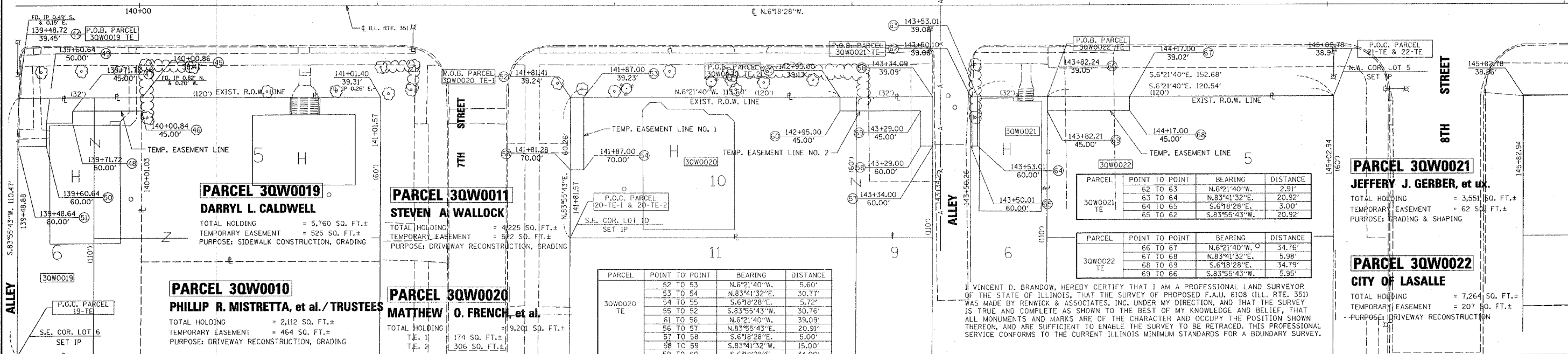
PARCEL 30W0018
JOHN KUBIAK
TOTAL HOLDING = 4,239 SQ. FT.±
TEMPORARY EASEMENT = 68 SQ. FT.±
PURPOSE: SIDEWALK CONSTRUCTION, GRADING



ILLINOIS

RTE.

351



ILLINOIS

RTE.

351

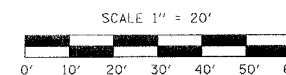
| PARCEL | POINT TO POINT | BEARING | DISTANCE |
|------------|----------------|---------------|----------|
| 30W0019 TE | 44 TO 45 | N.6°21'40"W. | 52.14' |
| | 45 TO 46 | N.83°55'43"E. | 5.59' |
| | 46 TO 47 | S.6°18'28"E. | 29.12' |
| | 47 TO 48 | N.83°41'32"E. | 5.00' |
| | 48 TO 49 | S.6°18'28"E. | 11.08' |
| | 49 TO 50 | N.83°41'32"E. | 10.00' |
| | 50 TO 51 | S.6°18'28"E. | 12.00' |

ORIGINAL TOWN PLAT BK. H, PAGE 19 BLOCK 34

N.E. 1/4 OF SEC. 15, T.33N., R.1E. OF THE 3RD P.M.

VINCENT D. BRANDOW, HEREBY CERTIFY THAT I AM A PROFESSIONAL LAND SURVEYOR OF THE STATE OF ILLINOIS, THAT THE SURVEY OF PROPOSED F.A.U. 6108 (ILL. RTE. 351) WAS MADE BY RENWICK & ASSOCIATES, INC. UNDER MY DIRECTION, AND THAT THE SURVEY IS TRUE AND COMPLETE AS SHOWN TO THE BEST OF MY KNOWLEDGE AND BELIEF, THAT ALL MONUMENTS AND MARKS ARE OF THE CHARACTER AND OCCUPY THE POSITION SHOWN THEREON, AND ARE SUFFICIENT TO ENABLE THE SURVEY TO BE RETRACED. THIS PROFESSIONAL SERVICE CONFORMS TO THE CURRENT ILLINOIS MINIMUM STANDARDS FOR A BOUNDARY SURVEY.

ILLINOIS PROFESSIONAL LAND SURVEYOR NO. 2655 11-30-04 EXPIRATION DATE



NOTE: ALL BEARINGS ARE REFERENCED TO THE ILLINOIS STATE PLANE COORDINATE SYSTEM, EAST ZONE (N.A.D. 83)

PARCEL 30W0021
JEFFERY J. GERBER, et ux.
TOTAL HOLDING = 3,551 SQ. FT.±
TEMPORARY EASEMENT = 62 SQ. FT.±
PURPOSE: GRADING & SHAPING

PARCEL 30W0022
CITY OF LASALLE
TOTAL HOLDING = 7,264 SQ. FT.±
TEMPORARY EASEMENT = 207 SQ. FT.±
PURPOSE: DRIVEWAY RECONSTRUCTION

| RIGHT OF WAY PLANS | |
|--------------------|-----------------------------|
| ROUTE | F.A.U. 6108 (ILL. RTE. 351) |
| SECTION | (70X,71X)RS-1,(71X-VBR)DM |
| PROJECT | |
| COUNTY | LASALLE |
| JOB NUMBER | R-93-011-01 |
| STATION | 139+35 TO 145+80 |
| SHEET | 197 OF 679 SCALE 1" = 20' |