

F.A.U. RTE.	SECTION	COUNTY	TOTAL SHEETS	SHEET NO.
6108	***	LA SALLE	679	198
STA.	TO STA.			
FED. ROAD DIST. NO.	ILLINOIS FED. AID PROJECT			

\*\*\* (70X,71X)RS-1, (71X-VBR)DM

N.E. 1/4 OF SEC. 15, T.33N., R.1E. OF THE 3RD P.M.

BLOCK 22

ORIGINAL TOWN  
PLAT BK. H, PAGE 19

**PARCEL 30W0030**

**STEVEN M. RODDA, et al.**

TOTAL HOLDING = 3,749 SQ. FT.±  
TEMPORARY EASEMENT = 115 SQ. FT.±  
PURPOSE: DRIVEWAY RECONSTRUCTION, GRADING

PARCEL	POINT TO POINT	BEARING	DISTANCE
30W0030 TE	77 TO 76	S.83°55'43"W.	5.64'
	76 TO 78	N.6°26'46"W.	20.38'
	78 TO 79	N.83°33'14"E.	5.67'
	79 TO 77	S.6°21'40"E.	20.42'

PARCEL	POINT TO POINT	BEARING	DISTANCE
30W0028 TE	74 TO 69	S.6°21'40"E.	32.14'
	69 TO 70	S.83°55'43"W.	19.71'
	70 TO 71	N.6°18'28"W.	5.12'
	71 TO 72	N.83°41'32"E.	12.00'
	72 TO 73	N.6°18'28"W.	26.97'
73 TO 74	N.83°55'43"E.	7.68'	

PARCEL	POINT TO POINT	BEARING	DISTANCE
30W0029 TE	77 TO 74	S.6°21'40"E.	60.54'
	74 TO 75	S.83°55'43"W.	5.68'
	75 TO 76	N.6°19'47"W.	60.54'
	76 TO 77	N.83°55'43"E.	5.64'

**PARCEL 30W0029**

**MICHAEL V. McCOY, et al.**

TOTAL HOLDING = 7,276 SQ. FT.±  
TEMPORARY EASEMENT = 343 SQ. FT.±  
PURPOSE: DRIVEWAY RECONSTRUCTION, GRADING

**PARCEL 30W0028**

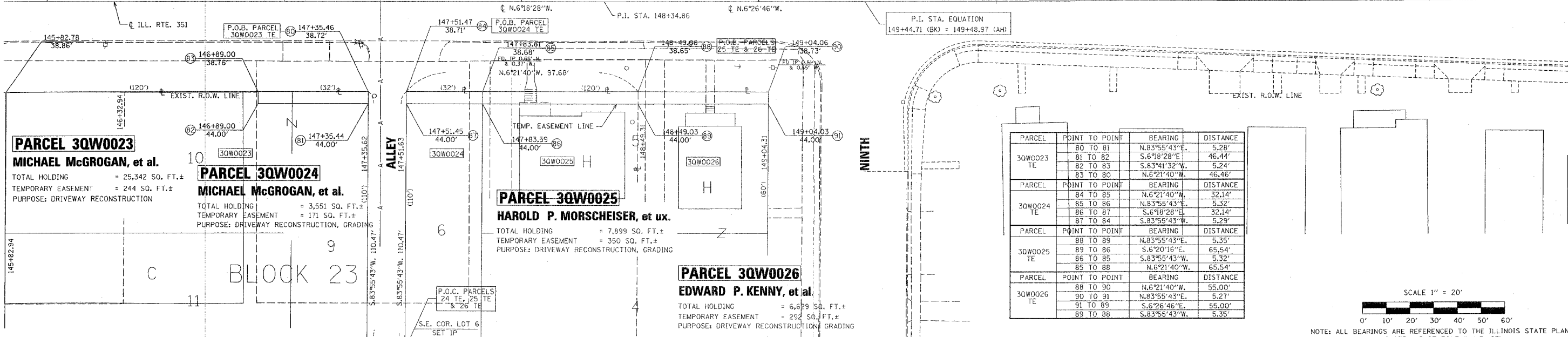
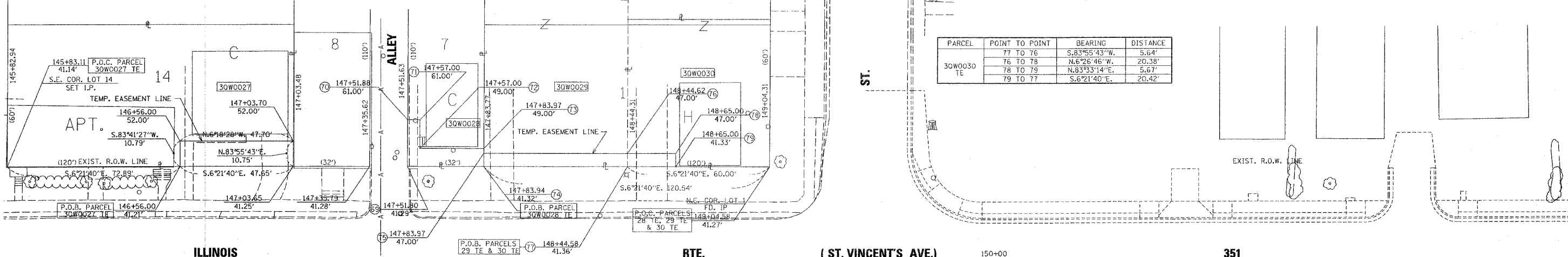
**RONALD J. FRANKLIN, et ux.**

TOTAL HOLDING = 3,541 SQ. FT.±  
TEMPORARY EASEMENT = 309 SQ. FT.±  
PURPOSE: GRADING & SHAPING

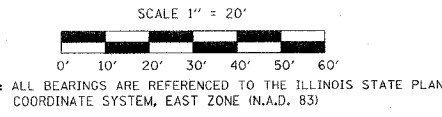
**PARCEL 30W0027**

**FRANK R. FOUTS**

TOTAL HOLDING = 7,243 SQ. FT.±  
TEMPORARY EASEMENT = 514 SQ. FT.±  
PURPOSE: SIDEWALK & DRIVEWAY RECONSTRUCTION, GRADING



PARCEL	POINT TO POINT	BEARING	DISTANCE
30W0023 TE	80 TO 81	N.83°55'43"E.	5.28'
	81 TO 82	S.6°18'28"E.	46.44'
	82 TO 83	S.83°41'32"W.	5.24'
	83 TO 80	N.6°21'40"W.	46.46'
30W0024 TE	84 TO 85	N.6°21'40"W.	32.14'
	85 TO 86	N.83°55'43"E.	5.32'
	86 TO 87	S.6°18'28"E.	32.14'
	87 TO 84	S.83°55'43"W.	5.29'
30W0025 TE	88 TO 89	N.83°55'43"E.	5.35'
	89 TO 86	S.6°20'16"E.	65.54'
	86 TO 85	S.83°55'43"W.	5.32'
	85 TO 88	N.6°21'40"W.	65.54'
30W0026 TE	88 TO 90	N.6°21'40"W.	55.00'
	90 TO 91	N.83°55'43"E.	5.27'
	91 TO 89	S.6°26'46"E.	55.00'
	89 TO 88	S.83°55'43"W.	5.35'



RIGHT OF WAY PLANS	
ROUTE	F.A.U. 6108 (IL. RTE. 351)
SECTION	(70X,71X)RS-1,(71X-VBR)DM
PROJECT	
COUNTY	LASALLE
JOB NUMBER	R-93-011-01
STATION	145+80 TO 152+00
SHEET	198 OF 679 SCALE 1" = 20'

I VINCENT D. BRANDOW, HEREBY CERTIFY THAT I AM A PROFESSIONAL LAND SURVEYOR OF THE STATE OF ILLINOIS, THAT THE SURVEY OF PROPOSED F.A.U. 6108 (ILL. RTE. 351) WAS MADE BY RENWICK & ASSOCIATES, INC. UNDER MY DIRECTION, AND THAT THE SURVEY IS TRUE AND COMPLETE AS SHOWN TO THE BEST OF MY KNOWLEDGE AND BELIEF, THAT ALL MONUMENTS AND MARKS ARE OF THE CHARACTER AND OCCUPY THE POSITION SHOWN THEREON, AND ARE SUFFICIENT TO ENABLE THE SURVEY TO BE RETRACED. THIS PROFESSIONAL SERVICE CONFORMS TO THE CURRENT ILLINOIS MINIMUM STANDARDS FOR A BOUNDARY SURVEY.

DATE: \_\_\_\_\_ ILLINOIS PROFESSIONAL LAND SURVEYOR NO. 2655  
SURVEY BOOK NO. \_\_\_\_\_ 11-30-04 EXPIRATION DATE

N.E. 1/4 OF SEC. 15, T.33N., R.1E. OF THE 3RD P.M.