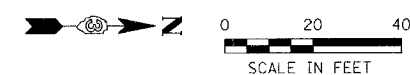
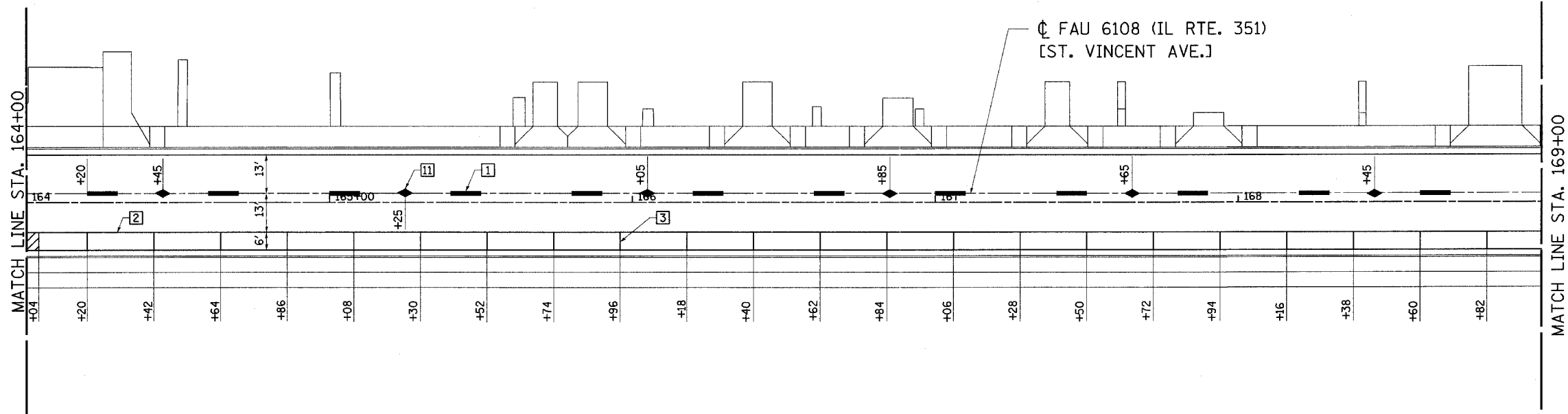


DESIGN		
INT.	DATE	REASON



F.A.U. RTE.	SECTION	COUNTY	TOTAL SHEETS	SHEET NO.
6108	...	LA SALLE	679	241
STA. 164+00		TO STA. 174+00		
FED. ROAD DIST. NO.		ILLINOIS	FED. AID PROJECT	
...		(70X,71X)RS-1, (71X-VBR)DM		
CONTRACT NO. 66225				

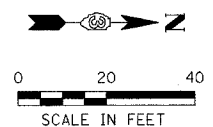
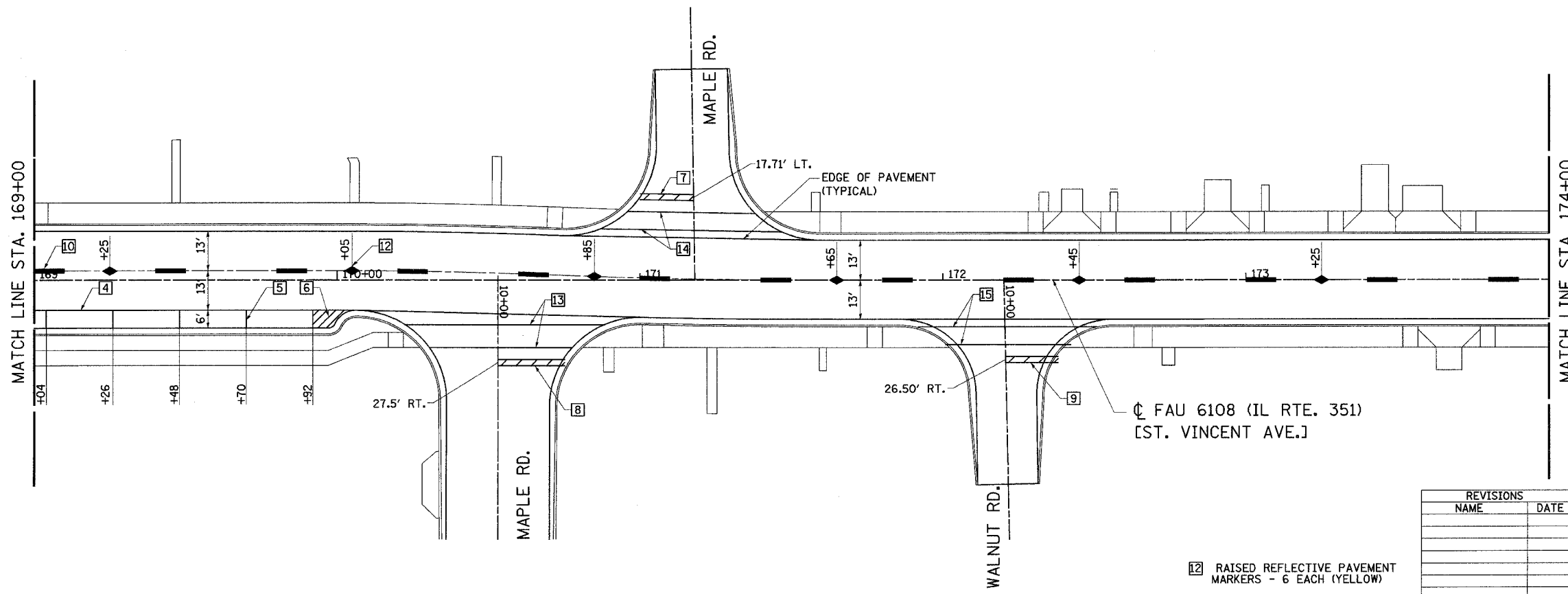


PLOTS & CHECKS		
INT.	DATE	REASON

- 1 THERMOPLASTIC PAVEMENT MARKING-LINE 6" (YELLOW-SKIP DASH) 120 FOOT
- 2 THERMOPLASTIC PAVEMENT MARKING-LINE 4" (WHITE) 500 FOOT
- 3 THERMOPLASTIC PAVEMENT MARKING-LINE 4" (WHITE) 138 FOOT
- 4 THERMOPLASTIC PAVEMENT MARKING-LINE 4" (WHITE) 105 FOOT
- 5 THERMOPLASTIC PAVEMENT MARKING-LINE 4" (WHITE) 30 FOOT
- 6 THERMOPLASTIC PAVEMENT MARKING-LINE 4" (WHITE-DIAGONAL 24" SPACE) 18 FOOT
- 7 THERMOPLASTIC PAVEMENT MARKING-LINE 24" (WHITE) 15 FOOT
- 8 THERMOPLASTIC PAVEMENT MARKING-LINE 24" (WHITE) 20 FOOT
- 9 THERMOPLASTIC PAVEMENT MARKING-LINE 24" (WHITE) 21 FOOT
- 10 THERMOPLASTIC PAVEMENT MARKING-LINE 6" (YELLOW-SKIP DASH) 130 FOOT
- 11 RAISED REFLECTIVE PAVEMENT MARKERS 6 EACH (YELLOW)
- 12 RAISED REFLECTIVE PAVEMENT MARKERS 6 EACH (YELLOW)
- 13 THERMOPLASTIC PAVEMENT MARKING-LINE 6" (WHITE) 112 FOOT
- 14 THERMOPLASTIC PAVEMENT MARKING-LINE 6" (WHITE) 102 FOOT
- 15 THERMOPLASTIC PAVEMENT MARKING-LINE 6" (WHITE) 100 FOOT

FILE NAME = #FILE#
 PLOT SCALE = #OFFSCALE# DRV = #PLOTTERS#
 PLOT DATE = #DATE#
 PLOT TIME = #TIME#
 OPERATOR = #USERS#

CHECKS		
INT.	DATE	REASON



12 RAISED REFLECTIVE PAVEMENT MARKERS - 6 EACH (YELLOW)

REVISIONS	
NAME	DATE

ILLINOIS DEPARTMENT OF TRANSPORTATION

PAVEMENT STRIPING PLAN

FAU 6108 (IL RTE. 351)
 SEC. (70X,71X)RS-1, (71X-VBR)DM
 LA SALLE COUNTY

SCALE: VERT. DRAWN BY: MABUS
 HORIZ. DESIGNED BY: BOTT
 DATE 05/06/03 CHECKED BY: COLBROOK

GREEN & BRADFORD, INC.
OF SPRINGFIELD
 CIVIL ENGINEERS
 1111 S. HARRIS ST.
 SPRINGFIELD, ILL. 62761-4444
 (217) 522-1100

COMPUTER FILE NO.
PM351B-01

PROJECT 01194.B.S
07/12/03-PAM