

STATE OF ILLINOIS
DEPARTMENT OF TRANSPORTATION

F.A.U. RTE. 6108	SECTION ***	COUNTY LA SALLE	TOTAL SHEETS 679	SHEET NO. 254
SHEET NO. 4 4 SHEETS				
STA. 229+42				
FED. ROAD DIST. NO. ILLINOIS FED. AID PROJECT				
*** (70X, 71X)RS-1, (71X-VBR)DM CONTRACT NO. 66225				



Illinois Department
of Transportation
Division of Highways
District 2, Dixon

SOIL BORING LOG

Page 1 of 1

Date 8/22/01

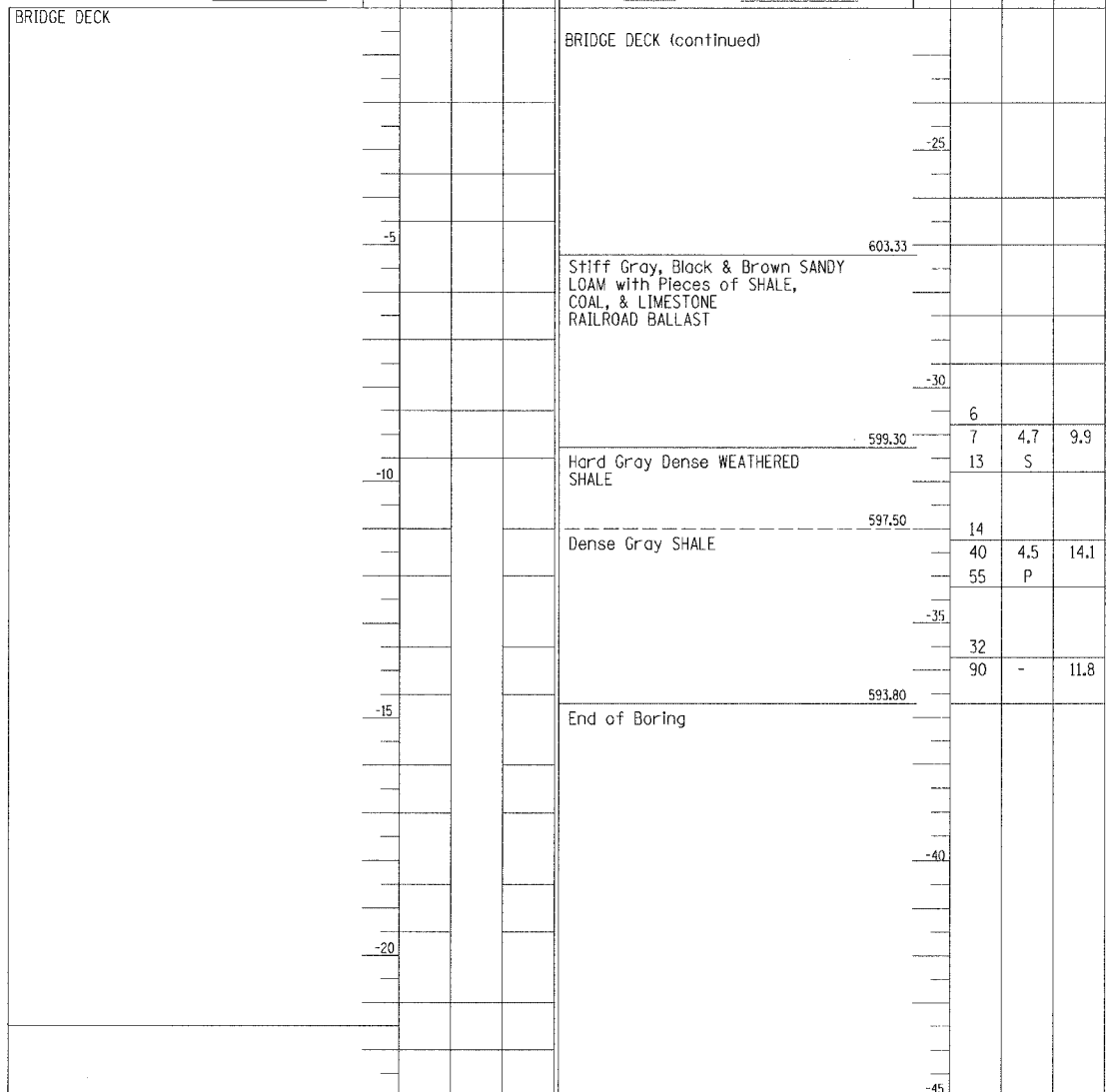
ROUTE FAP 6108(IL 351) DESCRIPTION ILLINOIS 351 OVER ABANDONED RAILROAD NORTH OF LASALLE LOGGED BY IDOT-BW

SECTION (70X,71X)RS-1, (71X-VBR)DM LOCATION SE 1/4, SEC. 3, TWP. 33N, RNG. 1E, 3rd PM

COUNTY LASALLE DRILLING METHOD Hollow Stem Auger HAMMER TYPE AUTOMATIC

STRUCT. NO. 050-0025 EXISTING
Station 229+42.73
BORING NO. 1
Station 229+37
Offset 8.00ft RT.
Ground Surface Elev. 630.50 ft

D	B	U	M	Surface Water Elev.	ft	D	B	U	M
E	L	C	O	Stream Bed Elev.	ft	P	O	S	I
T	W	Q	S	Groundwater Elev.:		H	S	Q	T
H	S	Qu	T	First Encounter	NONE				
				Upon Completion		(ft)	(/6")	(tsf)	(%)
				After	Hrs.				



The Unconfined Compressive Strength (UCS) Failure Mode is indicated by (B-Bulge, S-Shear, P-Penetrator)
The SPT (N value) is the sum of the last two blow values in each sampling zone (AASHTO T206)

BBS, from 137 (Rev. 8-99)

BM=Centerline Bridge/Centerline Road=100 ft

ILLINOIS DEPARTMENT OF TRANSPORTATION

BORING LOGS

FAU 6108 (IL. RTE. 351)
SECTION (70X, 71X)RS-1, (71X - VBR)DM
LASALLE COUNTY

REVISIONS	
NAME	DATE

SCALE: VERT. HORIZ.
DATE: 12/9/03
DRAWN BY: HEBERLING
DESIGNED BY: WATKINS
CHECKED BY: BOTT

 GREENE & BRADFORD, INC. OF SPRINGFIELD CONSULTING ENGINEERS 1010 SOUTH MAIN STREET SPRINGFIELD, ILLINOIS 62761-1010 (217) 525-4444 FAX (217) 525-4445 WWW.GRENEANDBRADFORD.COM	COMPUTER FILE NO. REMOVAL_B.S.-4 PROJECT 01194.B.S. 4/23/04 - MML
--	--

\\cslth\paw\res\res\p_5.dgn 12/9/2004 8:24:47 PM User = green