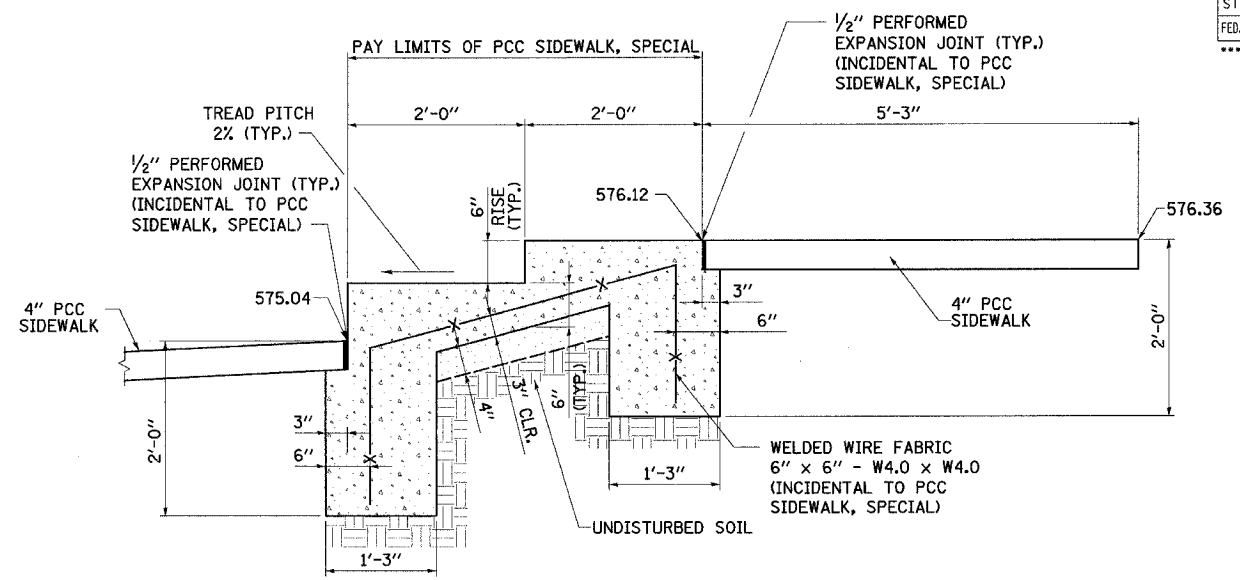
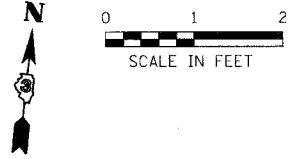
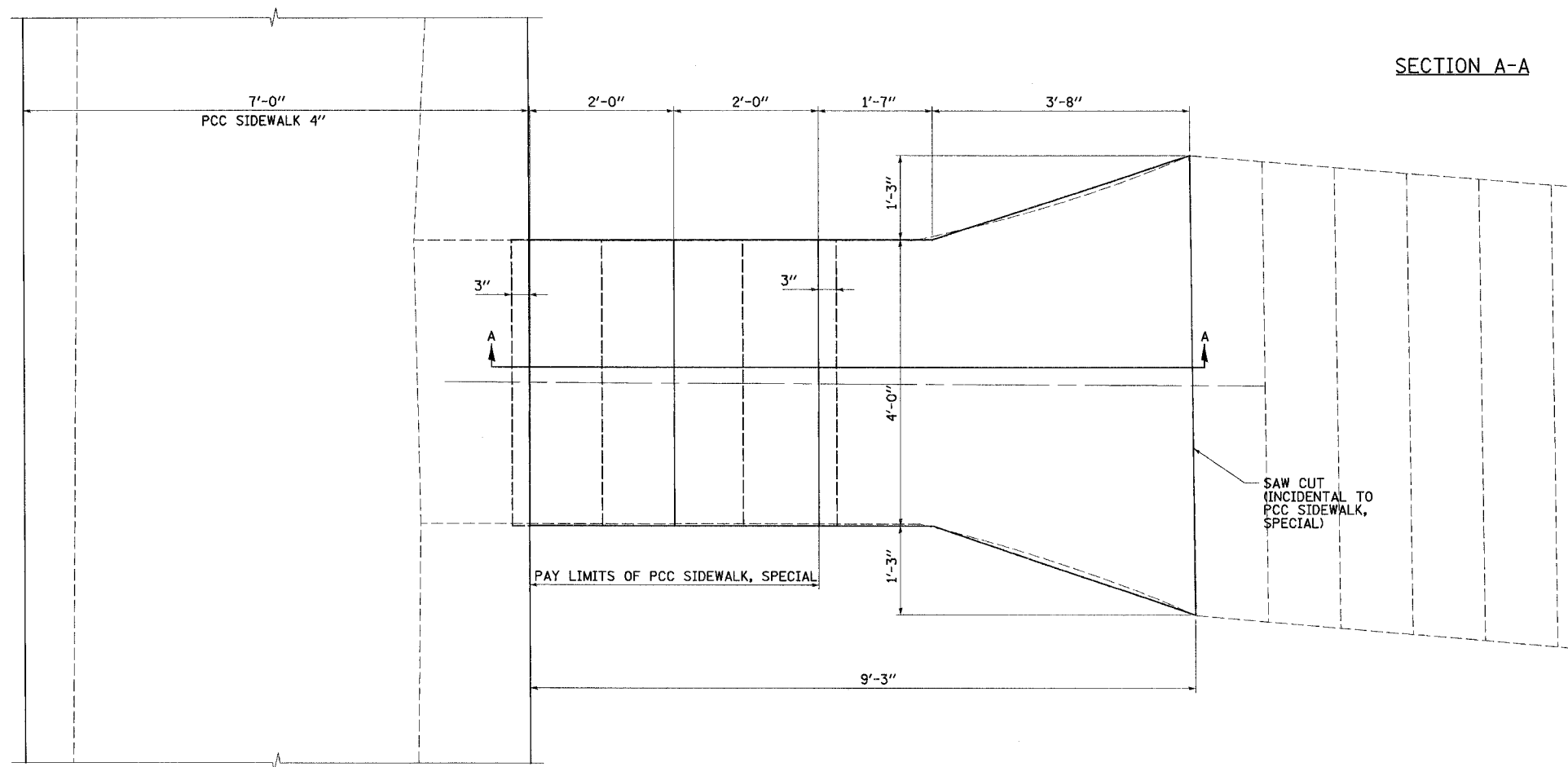


DESIGN		
INT.	DATE	REASON

F.A.U. RTE.	SECTION	COUNTY	TOTAL SHEETS	SHEET NO.
6108	***	LA SALLE	679	273
STA.		TO STA.		
FED. ROAD DIST. NO.		ILLINOIS FED. AID PROJECT		
*** (70X,71X)RS-1, (71X-VBR)DM		CONTRACT NO. 66225		



PLOTS & CHECKS		
INT.	DATE	REASON



SECTION A-A

PLAN VIEW

BILL OF MATERIALS		
ITEM	QUANTITY	UNIT
PCC SIDEWALK, SPECIAL	16.0	SQ. FT.

NOTE: ALL EXPOSED EDGE SHALL HAVE A 3/4" CHAMFER.

CHECKS		
INT.	DATE	REASON

REVISIONS	
NAME	DATE

ILLINOIS DEPARTMENT OF TRANSPORTATION
PCC SIDEWALK SPECIAL DETAIL
 RT. STA. 143+73

FAU 6108 (IL RTE. 351)
 SEC. (70X,71X)RS-1, (71X-VBR)DM
 LA SALLE COUNTY

SCALE: VERT. _____
 HORIZ. _____
 DATE 03/29/02-MMS

DRAWN BY: MABUS
 DESIGNED BY: KUNTZMAN
 CHECKED BY: COLBROOK

GREENE & BRADFORD, INC.
 OF SPRINGFIELD

CONSULTING ENGINEERS
 PROFESSIONAL ENGINEERS
 PROFESSIONAL ARCHITECTS
 PROFESSIONAL SURVEYORS
 PROFESSIONAL LAND SURVEYORS
 PROFESSIONAL CIVIL ENGINEERS
 PROFESSIONAL ELECTRICAL ENGINEERS
 PROFESSIONAL MECHANICAL ENGINEERS
 PROFESSIONAL CHEMICAL ENGINEERS
 PROFESSIONAL INDUSTRIAL ENGINEERS
 PROFESSIONAL AERONAUTICAL ENGINEERS
 PROFESSIONAL NUCLEAR ENGINEERS
 PROFESSIONAL METALLURGICAL ENGINEERS
 PROFESSIONAL ENVIRONMENTAL ENGINEERS
 PROFESSIONAL SAFETY ENGINEERS
 PROFESSIONAL FIRE ENGINEERS
 PROFESSIONAL MARINE ENGINEERS
 PROFESSIONAL AGRICULTURAL ENGINEERS
 PROFESSIONAL FORESTRY ENGINEERS
 PROFESSIONAL MINING ENGINEERS
 PROFESSIONAL PETROLEUM ENGINEERS
 PROFESSIONAL TRANSPORTATION ENGINEERS
 PROFESSIONAL WATER RESOURCES ENGINEERS
 PROFESSIONAL WIND ENGINEERS
 PROFESSIONAL POLYMER ENGINEERS
 PROFESSIONAL FOOD ENGINEERS
 PROFESSIONAL TEXTILE ENGINEERS
 PROFESSIONAL FIBER ENGINEERS
 PROFESSIONAL PAPER ENGINEERS
 PROFESSIONAL CERAMIC ENGINEERS
 PROFESSIONAL GLASS ENGINEERS
 PROFESSIONAL RUBBER ENGINEERS
 PROFESSIONAL PLASTIC ENGINEERS
 PROFESSIONAL COMPOSITE ENGINEERS
 PROFESSIONAL BIOMATERIALS ENGINEERS
 PROFESSIONAL BIOMEDICAL ENGINEERS
 PROFESSIONAL BIOMECHANICAL ENGINEERS
 PROFESSIONAL BIODESIGN ENGINEERS
 PROFESSIONAL BIOTECHNOLOGY ENGINEERS
 PROFESSIONAL BIOPHARMACEUTICALS ENGINEERS
 PROFESSIONAL BIOPROCESS ENGINEERS
 PROFESSIONAL BIOPRODUCTION ENGINEERS
 PROFESSIONAL BIOPROCESSING ENGINEERS
 PROFESSIONAL BIOPROCESSORS ENGINEERS
 PROFESSIONAL BIOPROCESSING ENGINEERS
 PROFESSIONAL BIOPROCESSORS ENGINEERS

COMPUTER FILE NO. STEPDETAIL_06
 PROJECT 01194_B.S
 09/29/04-MML