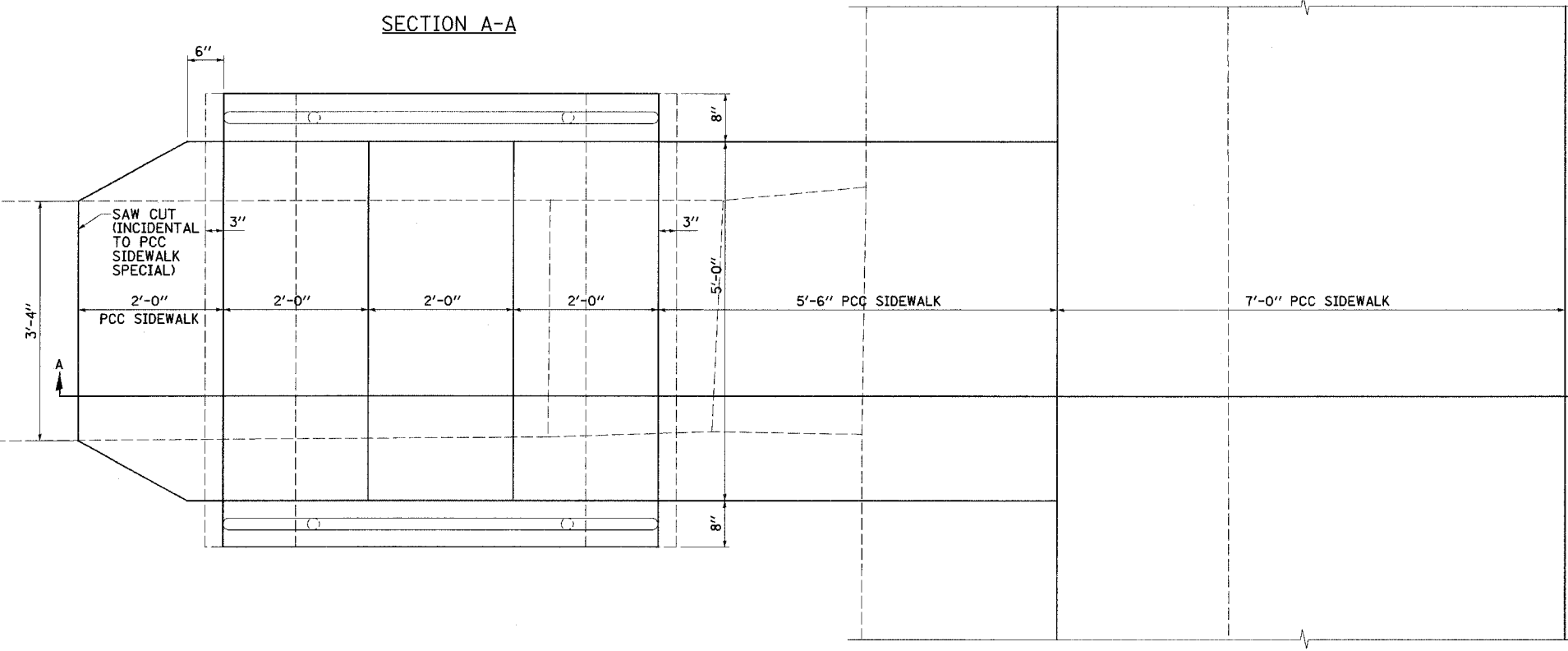
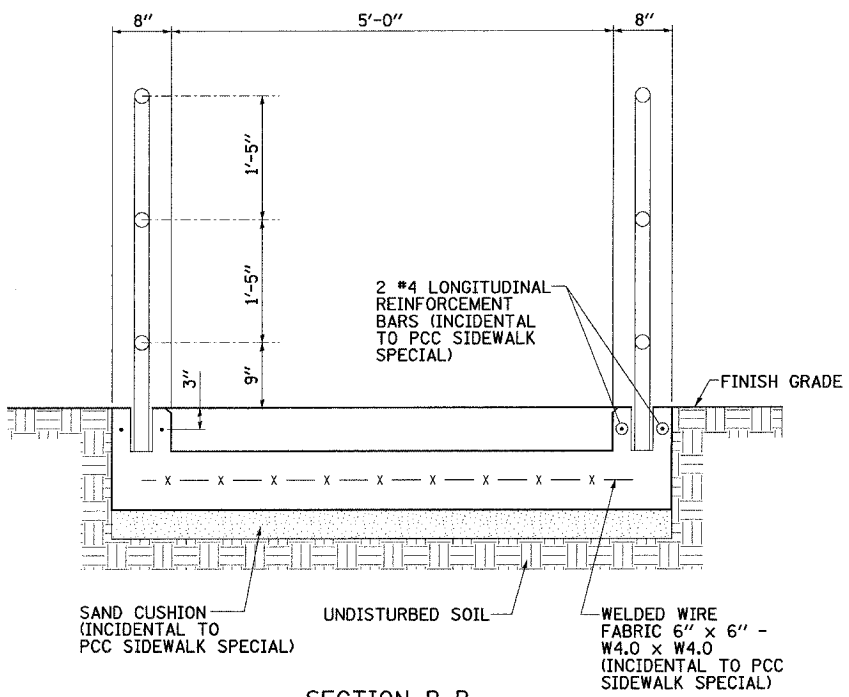
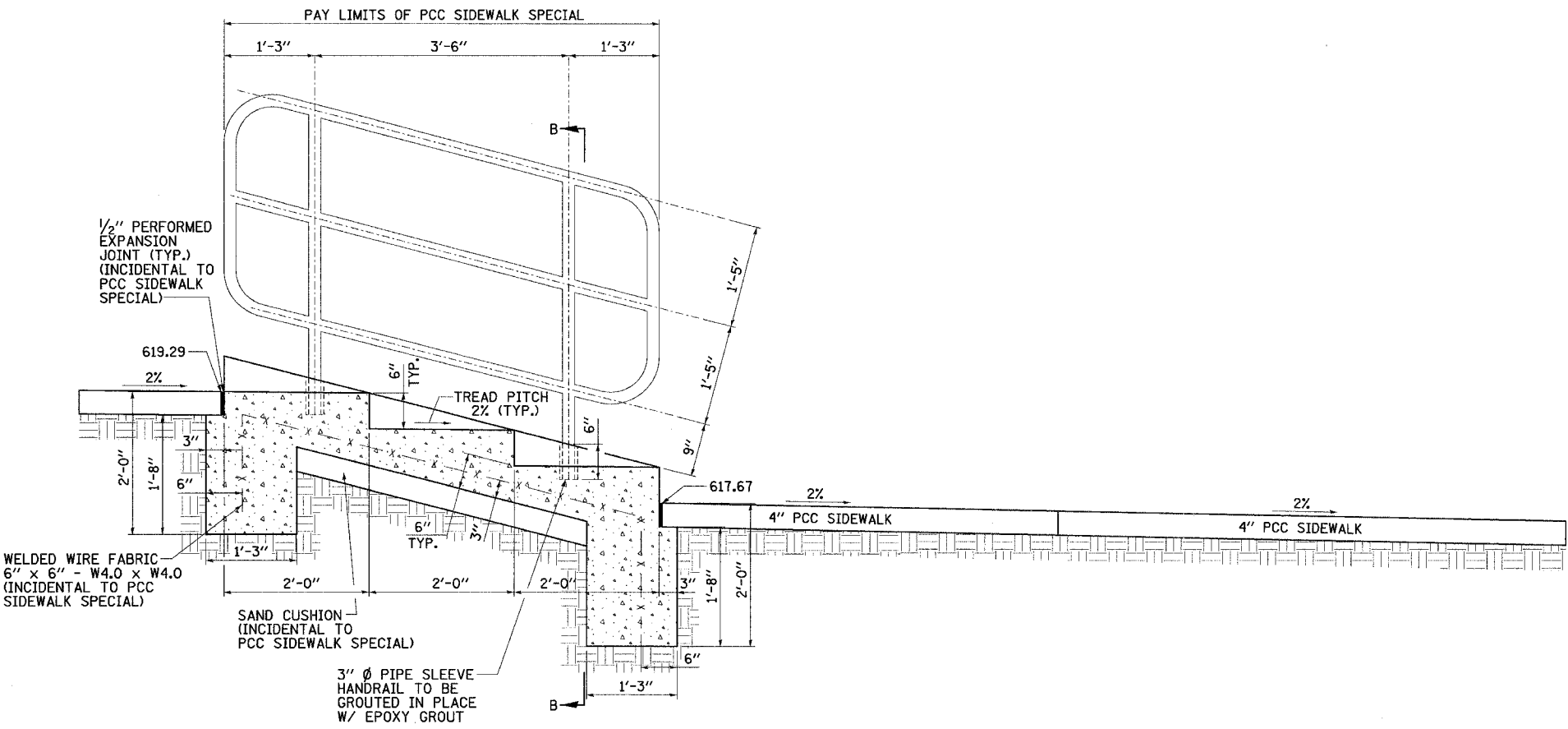


DESIGN		
INT.	DATE	REASON

PLOTS & CHECKS			
INT.	DATE	NO.	REASON

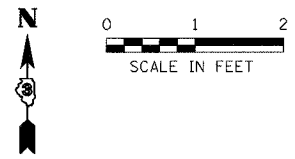
CHECKS		
INT.	DATE	REASON

FAU RTE.	SECTION	COUNTY	TOTAL SHEETS	SHEET NO.
6108	***	LA SALLE	679	276
STA.	TO STA.			
FED. ROAD DIST. NO.	ILLINOIS	FED. AID PROJECT		
*** (70X,71X)RS-1, (71X-VBR)DM				
CONTRACT NO. 66225				



BILL OF MATERIALS		
ITEM	QUANTITY	UNIT
PCC SIDEWALK SPECIAL	38.0	SQ. FT
PIPE HANDRAIL, SPECIAL	62.3	FOOT

NOTE: ALL EXPOSED EDGES SHALL HAVE A 3/4" CHAMFER.



ILLINOIS DEPARTMENT OF TRANSPORTATION  
**PCC SIDEWALK SPECIAL DETAIL**  
 LT. STA. 175+32.59

FAU 6108 (IL RTE. 351)  
 SEC. (70X,71X)RS-1, (71X-VBR)DM  
 LA SALLE COUNTY

SCALE: VERT.      DRAWN BY: LANDREY  
 HORIZ.              DESIGNED BY: BOTT  
 DATE: 9/23/04      CHECKED BY: COLBROOK

GREENE & BRADFORD, INC.  
 OF SPRINGFIELD

COMPUTER FILE NO.  
 STEPDETAIL-09

PROJECT 01194.B.S  
 09/24/04-MML

South Carolina State Capitol 12/22/2004 6:30:55 PM User: greg