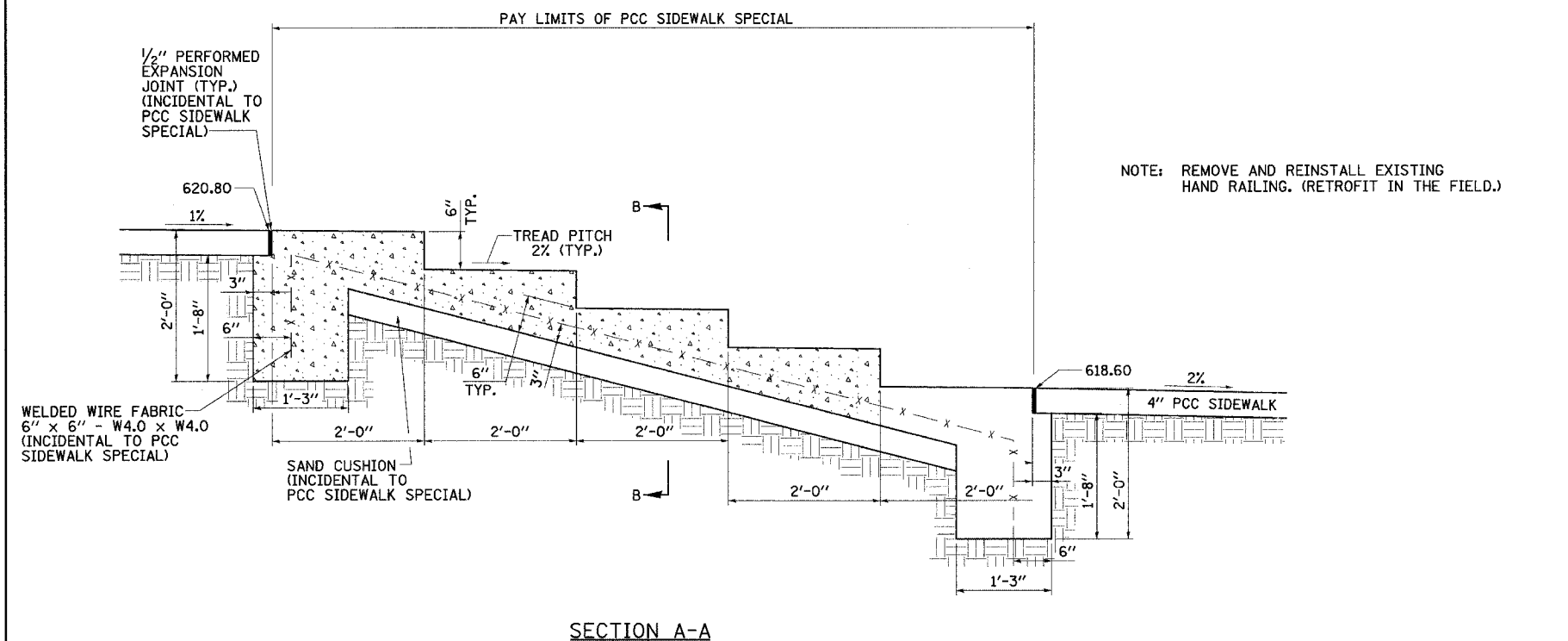


DESIGN		
INT.	DATE	REASON

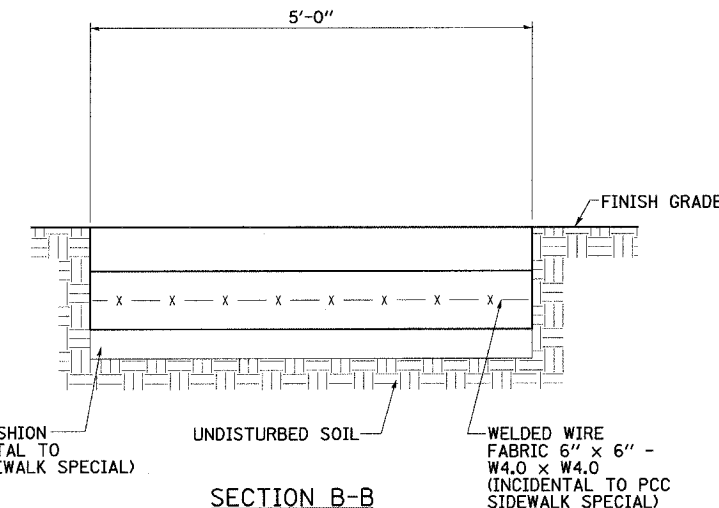
FAU RTE.	SECTION	COUNTY	TOTAL SHEETS	SHEET NO.
6108	***	LA SALLE	679	277
STA.	TO STA.			
FED. ROAD DIST. NO.	ILLINOIS	FED. AID PROJECT	*** (70X,71X)RS-1, (71X-VBR)DM	
CONTRACT NO. 66225				

PLOTS & CHECKS		
INT.	DATE	REASON

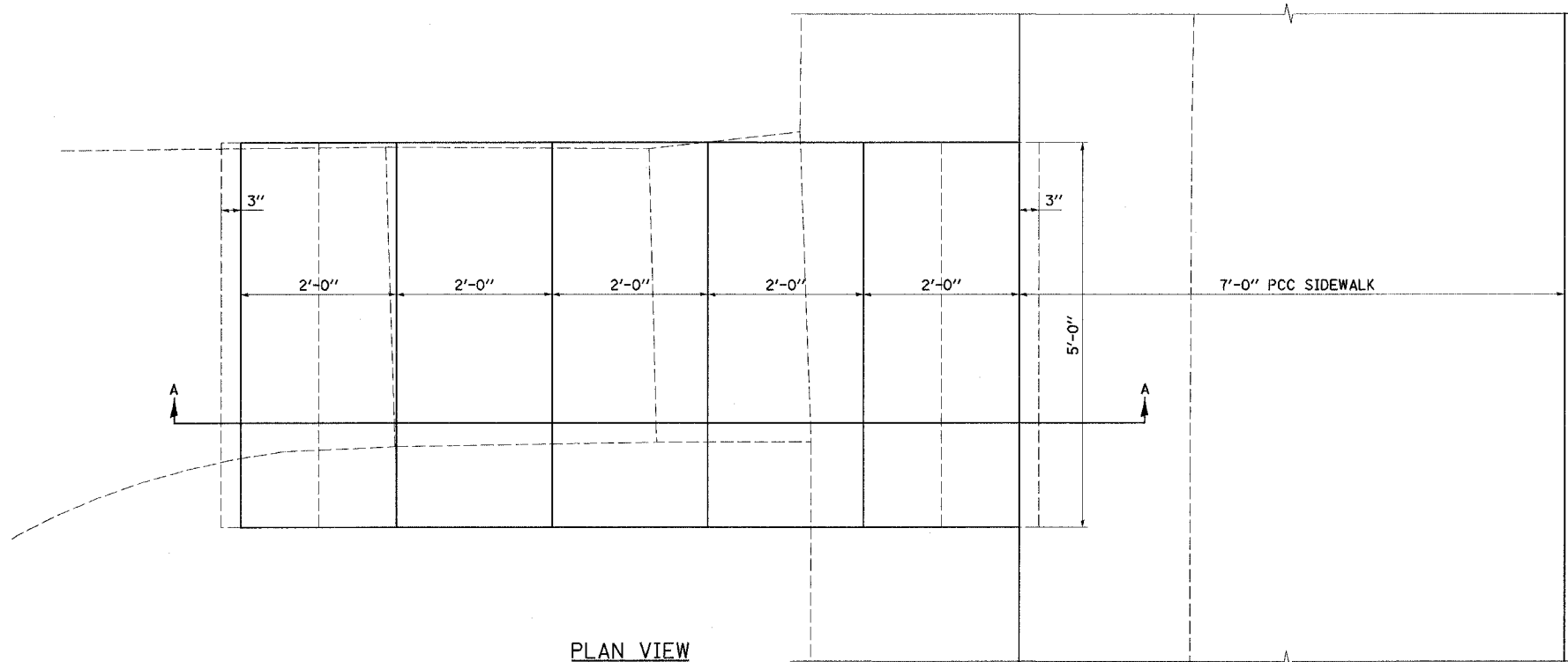
CHECKS		
INT.	DATE	REASON



SECTION A-A



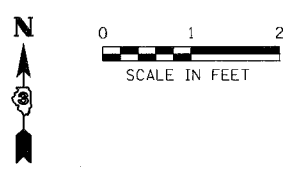
SECTION B-B



PLAN VIEW

BILL OF MATERIALS		
ITEM	QUANTITY	UNIT
PCC SIDEWALK SPECIAL	50.0	SQ. FT

NOTE: ALL EXPOSED EDGES SHALL HAVE A 3/4" CHAMFER.



ILLINOIS DEPARTMENT OF TRANSPORTATION
PCC SIDEWALK SPECIAL DETAIL
 LT. STA. 175+89.31

FAU 6108 (IL RTE. 351)
 SEC. (70X,71X)RS-1, (71X-VBR)DM
 LA SALLE COUNTY

SCALE: VERT. _____ DRAWN BY: LANDREY
 HORIZ. _____ DESIGNED BY: BOTI
 DATE: 9/23/04 CHECKED BY: COLBROOK

GREENE & BRADFORD, INC.
 OF SPRINGFIELD
 ENGINEERS ARCHITECTS INTERIORS
 PROFESSIONAL DESIGN FIRM INC. NO. 0688
 1001 W. STATE ST. SUITE 200 SPRINGFIELD, ILL. 62760
 (618) 792-8884 FAX (618) 792-8227 P.L.L.C. #0026248

COMPUTER FILE NO.
 STEPDETAIL-10
 PROJECT 01194_B.S
 09/24/04-MML

REVISIONS	
NAME	DATE

Source: par1\stepdetail.dgn 12/2/2004 6:30:55 PM User: ur201