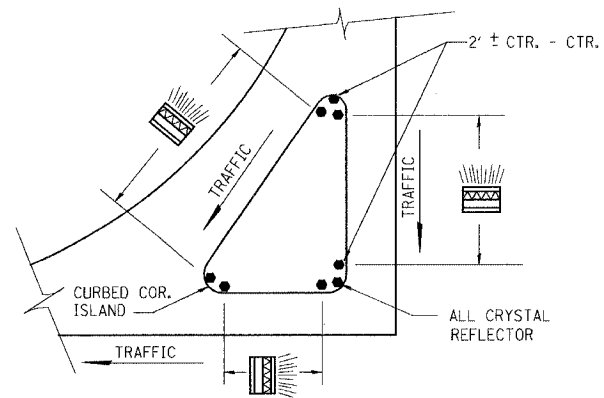
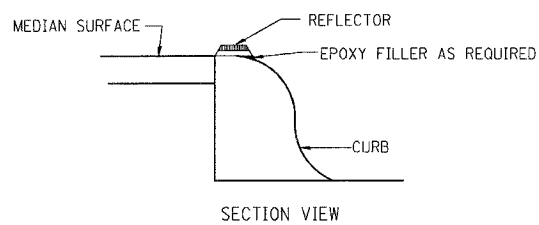


F.A.U. RTE.	SECTION	COUNTY	TOTAL SHEETS	SHEET NO.
6108	***	LA SALLE	679	296
STA.		TO STA.		
FED. ROAD DIST. NO.	ILLINOIS	FED. AID PROJECT		
*** (70X, 71X)RS-1, (71X-VBR)DM				
CONTRACT NO. 66225				



PRISMATIC REFLECTORS

782-2

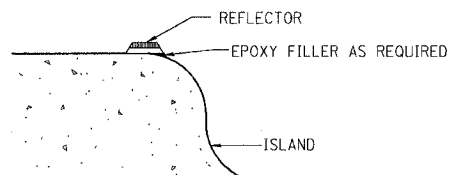


SECTION VIEW

NOTES

1. PRISMATIC REFLECTORS SHALL BE MONO-DIRECTIONAL AND POSITIONED SO THAT THE REFLECTIVE FACE IS FACING THE APPROACHING TRAFFIC.
2. PRISMATIC REFLECTORS SHALL BE SECURED IN PLACE WITH AN EPOXY ADHESIVE.
3. PRISMATIC REFLECTORS SHALL BE EITHER AMBER OR CRYSTAL IN COLOR.

OPTION 1

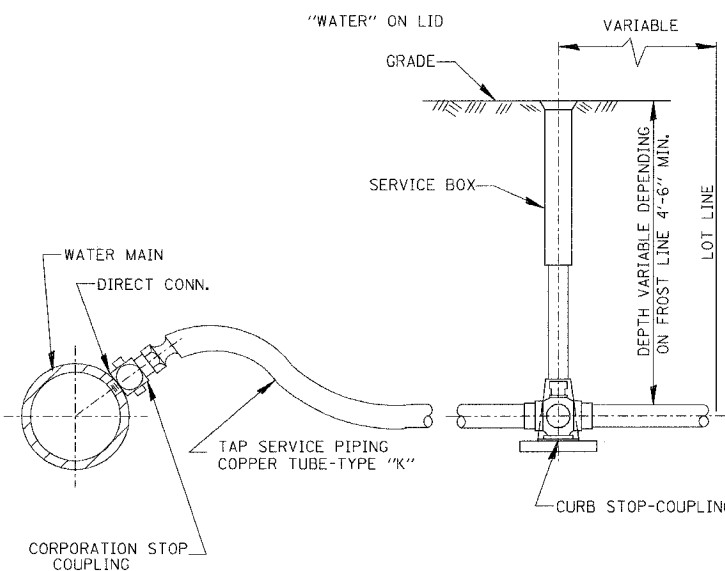


SECTION VIEW

NOTES

1. PRISMATIC REFLECTORS SHALL BE MONO-DIRECTIONAL AND POSITIONED SO THAT THE REFLECTIVE FACE IS FACING THE APPROACHING TRAFFIC.
2. PRISMATIC REFLECTORS SHALL BE SECURED IN PLACE WITH AN EPOXY ADHESIVE.
3. PRISMATIC REFLECTORS SHALL BE EITHER AMBER OR CRYSTAL IN COLOR.

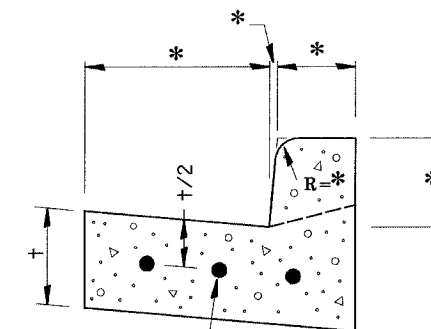
OPTION 2



TYPICAL
TAP SERVICE
PIPING (COPPER)

562-1

* VARIES - SEE STANDARD 606001



CONTINUOUSLY REINFORCED
WITH 3 - #4 BARS
EVENLY SPACED

REINFORCEMENT SHALL NOT BE PAID FOR
SEPARATELY BUT WILL BE INCLUDED IN THE
CONTRACT UNIT PRICE FOR CC&G.

**REINFORCEMENT DETAIL
FOR
COMBINATION CONCRETE
CURB AND GUTTER**

606-4

ILLINOIS DEPARTMENT OF TRANSPORTATION
DETAILS
FAU 6108 (IL. RTE. 351)
SECTION (70X, 71X)RS-1, (71X-VBR)DM
LASALLE COUNTY

REVISIONS	
NAME	DATE

SCALE: VERT.
HORIZ.
DATE: 06/06/03

DRAWN BY: MABUS
DESIGNED BY: BOTT
CHECKED BY: COLBROOK

GREENE & BRADFORD, INC.
OF SPRINGFIELD
CONSULTING ENGINEERS
AND ARCHITECTS
PROFESSIONAL ENGINEER REG. NO. 041-0000
PROFESSIONAL ARCHITECT REG. NO. 041-0000
1075 W. 84th St., Suite 100, Springfield, IL 62761-1075

COMPUTER FILE NO.
STANDARDS-09
PROJECT: 01194.B.S
03/03/04-RPB

DESIGN		
INT.	DATE	REASON

PLOTS & CHECKS		
INT.	DATE	REASON

FILE NAME = \$FILES\$
PLOT SCALE = \$PLOTSCALE\$
PLOT TIME = \$PLOTTIME\$
OPERATOR = \$OPERATOR\$

CHECKS		
INT.	DATE	REASON