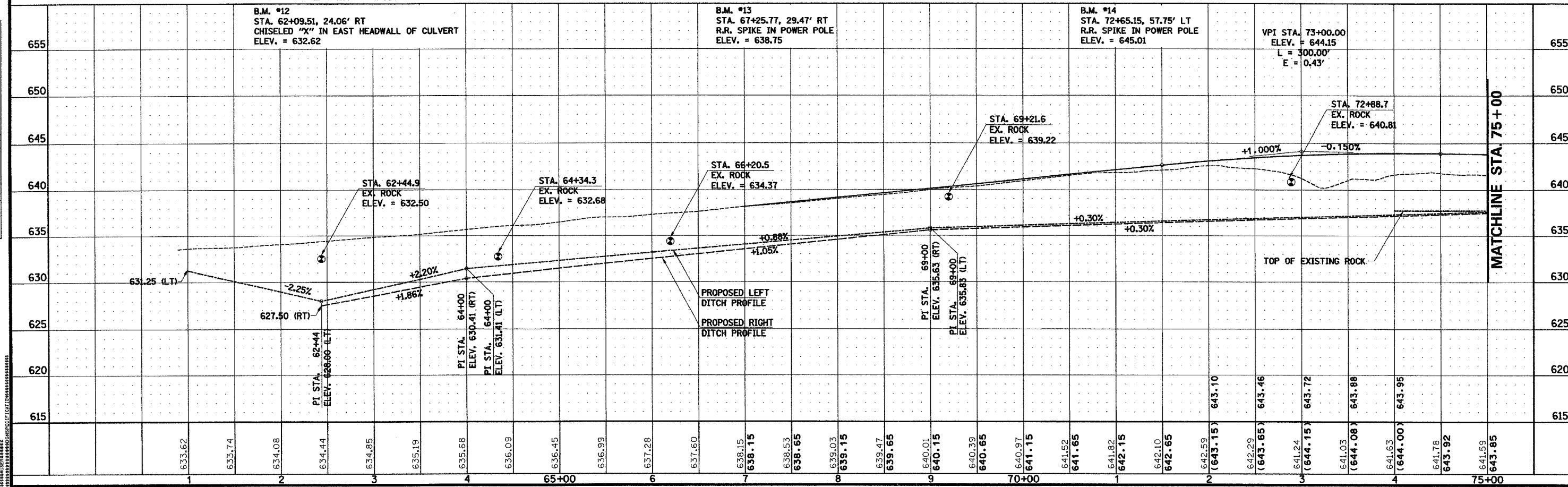
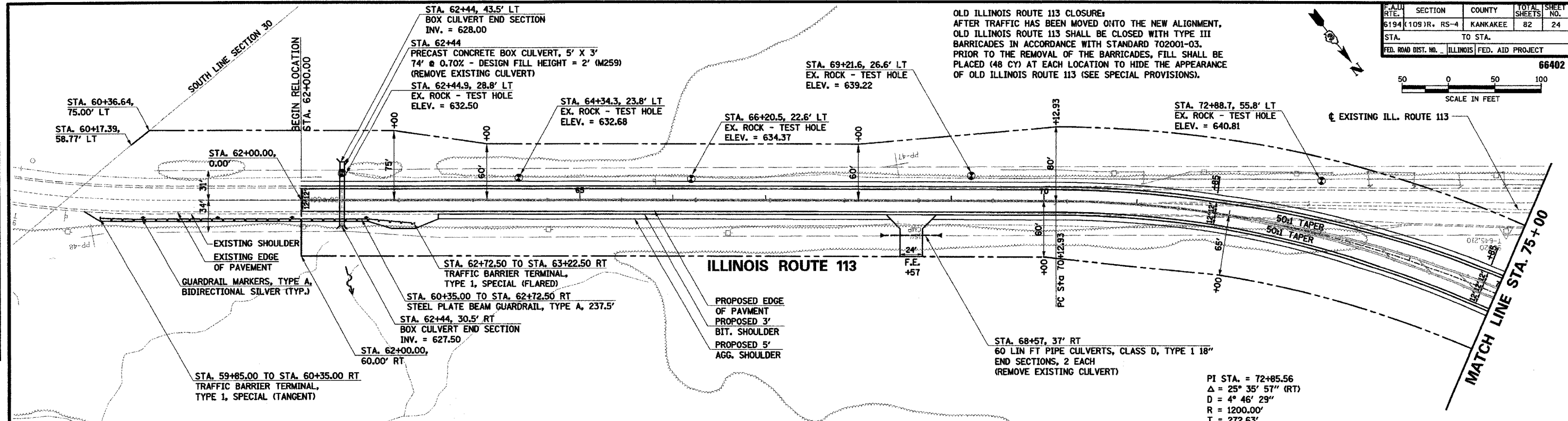


SECTION	COUNTY	TOTAL SHEETS	SHEET NO.
6194 (109)R, RS-4	KANKAKEE	82	24
STA. TO STA.		ILLINOIS FED. AID PROJECT	
FED. ROAD DIST. NO.		66402	



OLD ILLINOIS ROUTE 113 CLOSURE:
 AFTER TRAFFIC HAS BEEN MOVED ONTO THE NEW ALIGNMENT, OLD ILLINOIS ROUTE 113 SHALL BE CLOSED WITH TYPE III BARRICADES IN ACCORDANCE WITH STANDARD 702001-03. PRIOR TO THE REMOVAL OF THE BARRICADES, FILL SHALL BE PLACED (48 CY) AT EACH LOCATION TO HIDE THE APPEARANCE OF OLD ILLINOIS ROUTE 113 (SEE SPECIAL PROVISIONS).



ILLINOIS ROUTE 113 STA. 62+00 TO STA. 75+00 - PLAN AND PROFILE