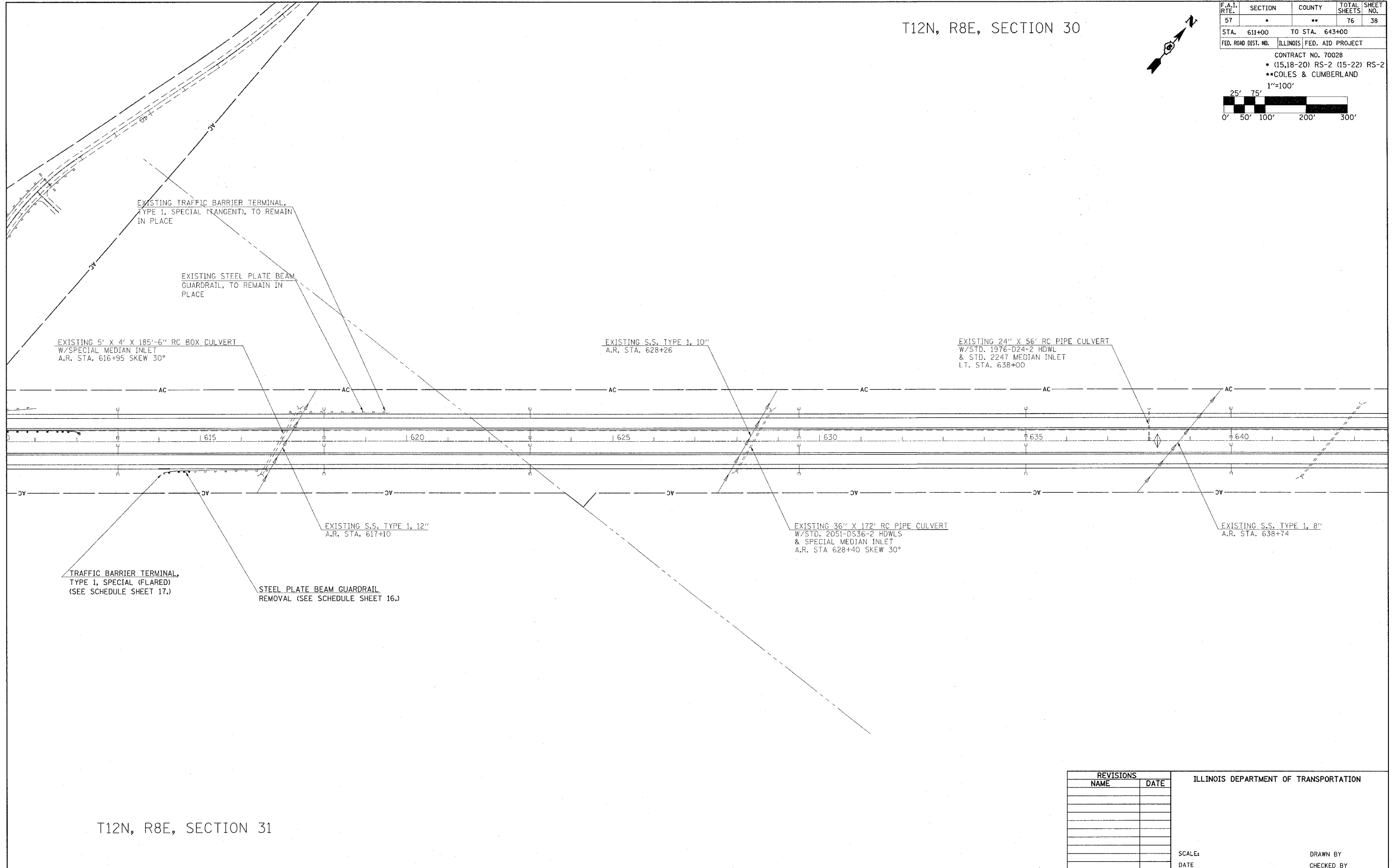
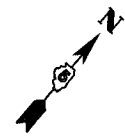


T12N, R8E, SECTION 30

F.A.I. RTE.	SECTION	COUNTY	TOTAL SHEETS	SHEET NO.
57		**	76	38
STA. 611+00		TO STA. 643+00		
FED. ROAD DIST. NO.	ILLINOIS	FED. AID PROJECT		
CONTRACT NO. 70028				
• (15,18-20) RS-2 (15-22) RS-2				
••COLES & CUMBERLAND				
1"=100'				



T12N, R8E, SECTION 31

REVISIONS		ILLINOIS DEPARTMENT OF TRANSPORTATION
NAME	DATE	
		SCALE: DATE
DRAWN BY		CHECKED BY

REVISED
2-22-05
SHEET