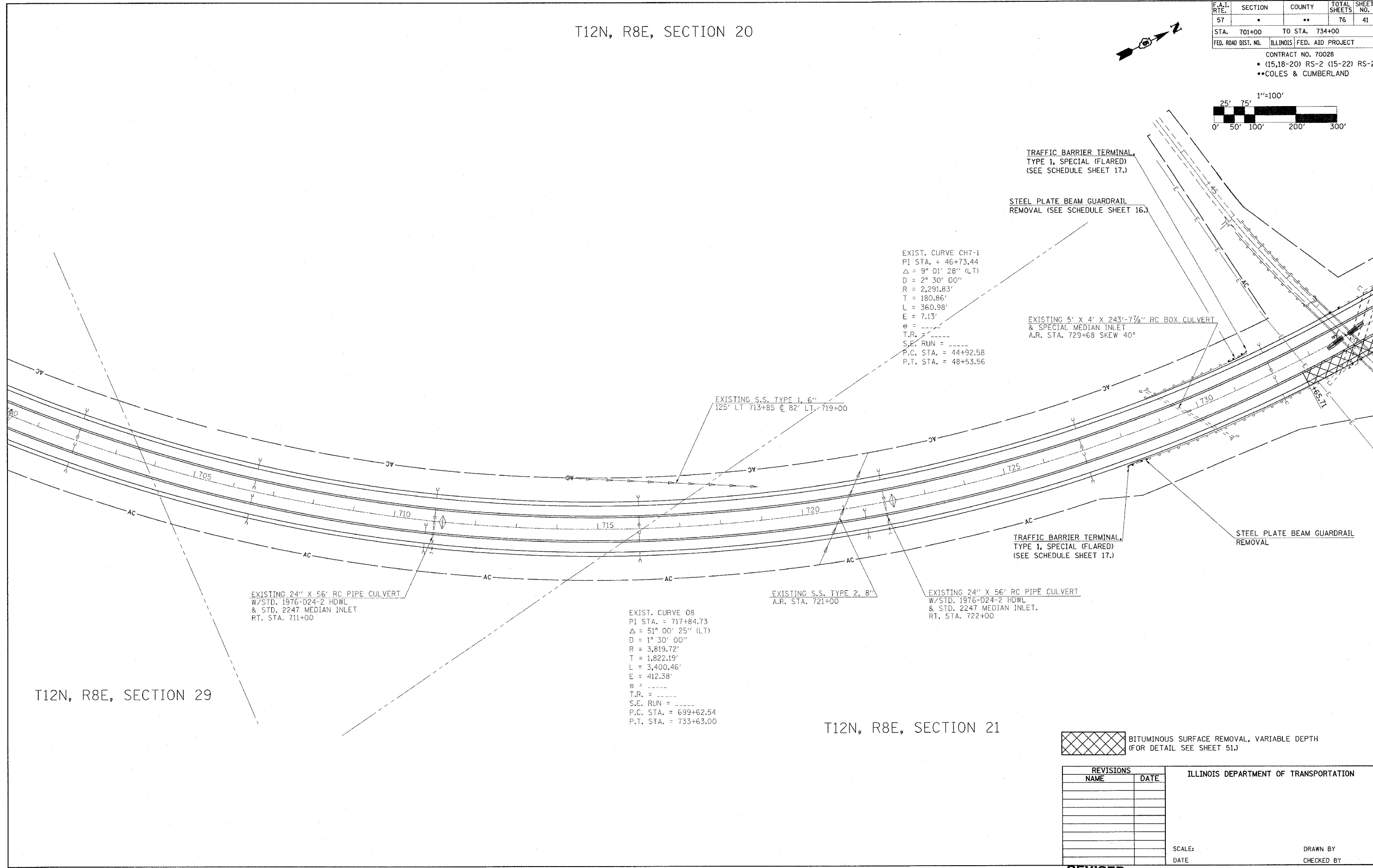
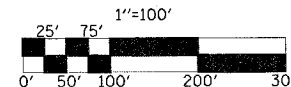


T12N, R8E, SECTION 20

F.A.I. RTE.	SECTION	COUNTY	TOTAL SHEETS	SHEET NO.
57	*	**	76	41
STA. 701+00	TO STA. 734+00			
FED. ROAD DIST. NO. ILLINOIS FED. AID PROJECT				
CONTRACT NO. 70028				
* (15,18-20) RS-2 (15-22) RS-2				
**COLES & CUMBERLAND				



T12N, R8E, SECTION 29

T12N, R8E, SECTION 21

BITUMINOUS SURFACE REMOVAL, VARIABLE DEPTH (FOR DETAIL SEE SHEET 51.)

REVISIONS	
NAME	DATE

ILLINOIS DEPARTMENT OF TRANSPORTATION

SCALE:
DATE

DRAWN BY
CHECKED BY

REVISED
2-22-05
SHEET