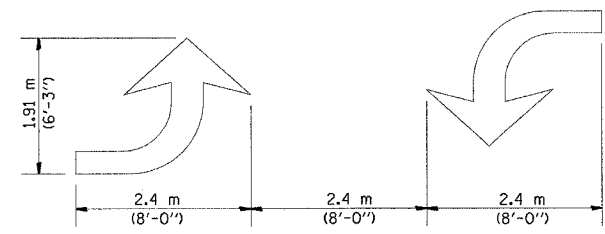


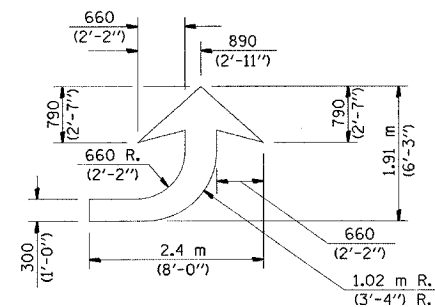
F.A. RTE.	SECTION	COUNTY	TOTAL SHEETS	SHEET NO.
74		**	76	55

CONTRACT NO. 70028  
 (15,18-20)RS-2&(15-22)RS-2  
 \*\* COLES & CUMBERLAND

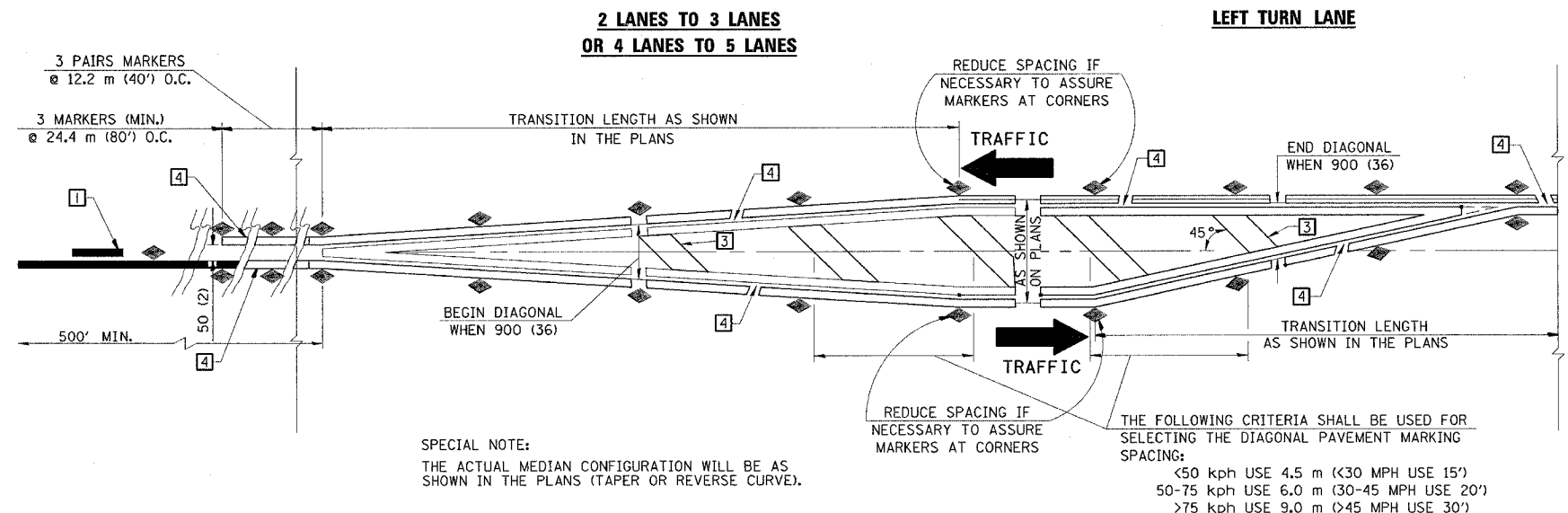
### TYPICAL APPLICATIONS OF PAVEMENT MARKINGS AND MARKERS



**TYPICAL DOUBLE TURN ARROWS (WHITE)**

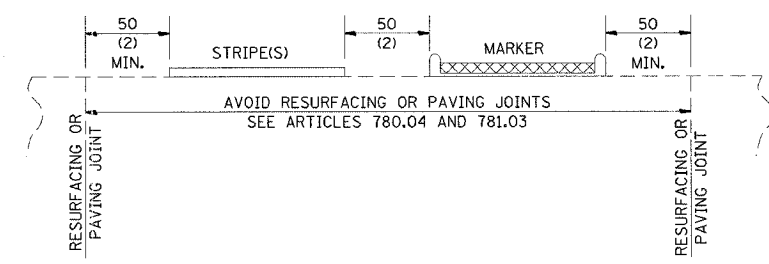


**LEFT ARROW**  
 REVERSE FOR RIGHT ARROW  
 AREA= 1.47 m<sup>2</sup> (15.6 SQ. FT.)  
 (WHITE)

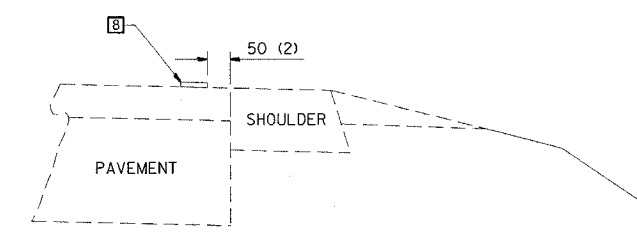


**SPECIAL NOTE:**  
 THE ACTUAL MEDIAN CONFIGURATION WILL BE AS SHOWN IN THE PLANS (TAPER OR REVERSE CURVE).

**TYPICAL MEDIAN TRANSITIONS**



**RELATIONSHIP OF STRIPES, MARKERS AND JOINTS**



**RELATIONSHIP OF EDGE STRIPE TO SAFETY SHOULDER OR PAVED SURFACE**

**GENERAL NOTES**

1. WHEN MEDIANS ARE PRESENT PAVEMENT MARKINGS ARE TO BE PLACED ADJACENT TO MEDIANS.
2. SCALE: NONE
3. SOME OF THE INFORMATION INCLUDED WITH THIS DETAIL MAY NOT BE APPLICABLE TO THIS IMPROVEMENT.
4. PAVEMENT MARKINGS ARE TO BE EXTENDED THROUGH OMISSIONS WHEN APPLICABLE.
5. A STRIPING KEY IS AVAILABLE ELSEWHERE AND SHALL BE SHOWN WHERE THE QUANTITIES ARE LISTED.
6. FINAL PAVEMENT MARKINGS SHALL BE IN PLACE PRIOR TO PLACING ANY RAISED REFLECTIVE PAVEMENT MARKERS.
7. THE FOLLOWING CRITERIA SHALL BE USED FOR SELECTING THE DIAGONAL PAVEMENT MARKING SPACING:  
 < 50 kph USE 4.5 m (< 30 MPH USE 15')  
 50-75 kph USE 6.0 m (30-45 MPH USE 20')  
 > 75 kph USE 9.0 m (> 45 MPH USE 30')

All dimensions are in millimeters (inches) unless otherwise shown.

	NAME	DATE
DESIGNED	J.M.H.	6/88
CHECKED	C.T.D.	6/88
CADD NO.	F-5.25	

REVISIONS	
NAME	DATE
G.A.M.	11/95
CHECKED D.L.P.	12/95

REVISIONS	
NAME	DATE
D.L.P.	8/97
GEOMETRICS	6/01