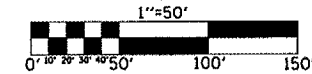
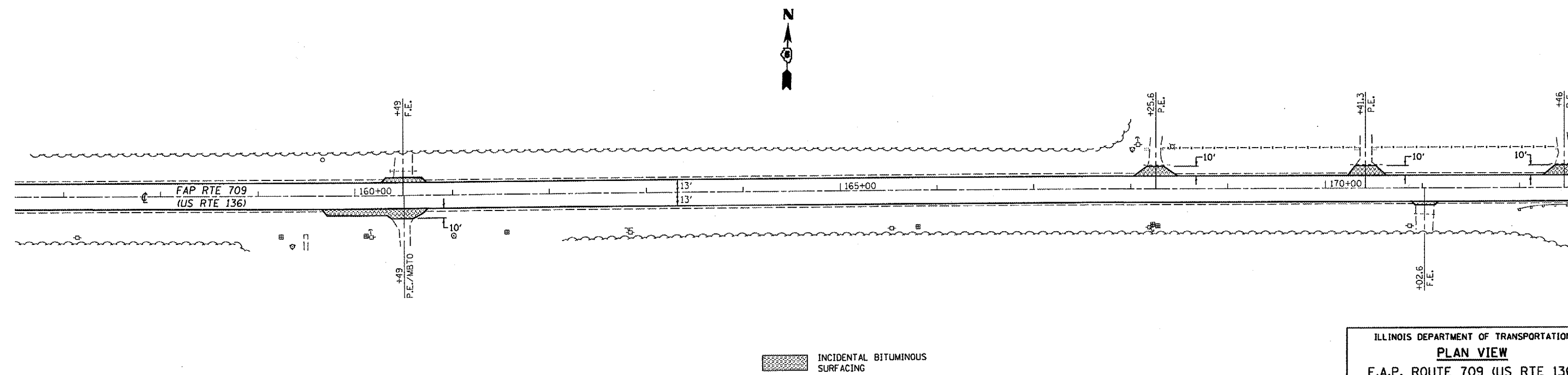
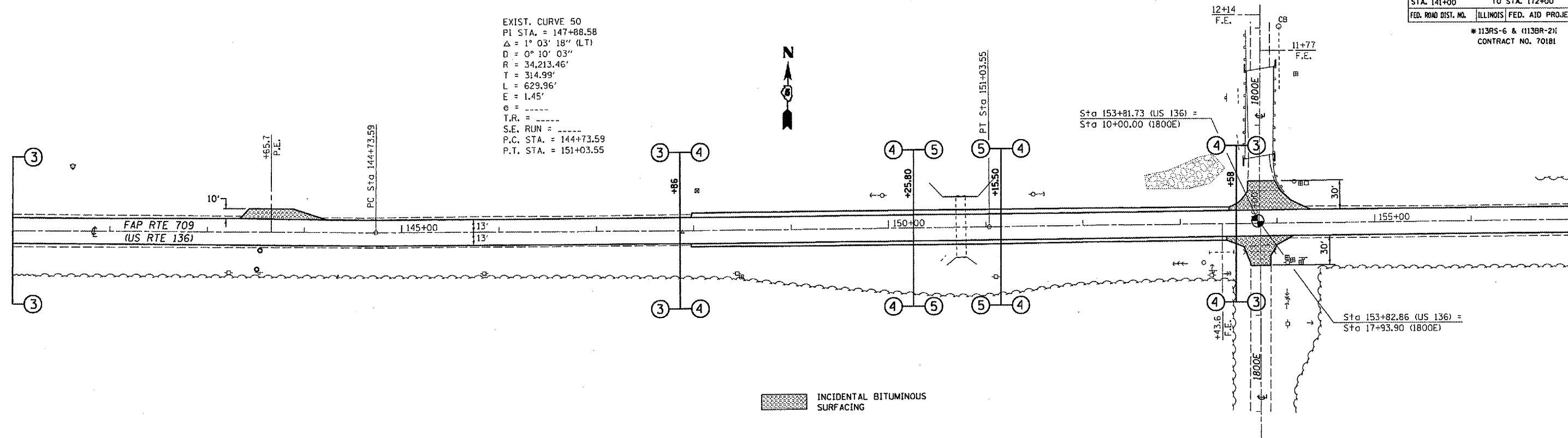


F.A.P. RTE.	SECTION	COUNTY	TOTAL SHEETS	SHEET NO.
709	*	CHAMPAIGN	64	30
STA. 141+00		TO STA. 172+00		
FED. ROAD DIST. NO.	ILLINOIS	FED. AID PROJECT		

* 113RS-6 & (113BR-2)
CONTRACT NO. 70181

EXIST. CURVE 50
 PI STA. = 147+88.58
 $\Delta = 1^\circ 03' 18''$ (LT)
 $D = 0^\circ 10' 03''$
 $R = 34,213.46'$
 $T = 314.99'$
 $L = 629.96'$
 $E = 1.45'$
 $e = \dots$
 $T.R. = \dots$
 $S.E. RUN = \dots$
 $P.C. STA. = 144+73.59$
 $P.T. STA. = 151+03.55$



ILLINOIS DEPARTMENT OF TRANSPORTATION
PLAN VIEW
 F.A.P. ROUTE 709 (US RTE 136)
 SECTION 113RS-6 & (113BR-2)
 CHAMPAIGN COUNTY
 SCALE: 1"=50'
 DATE 08/23/04
 DRAWN BY: CADD
 CHECKED BY: