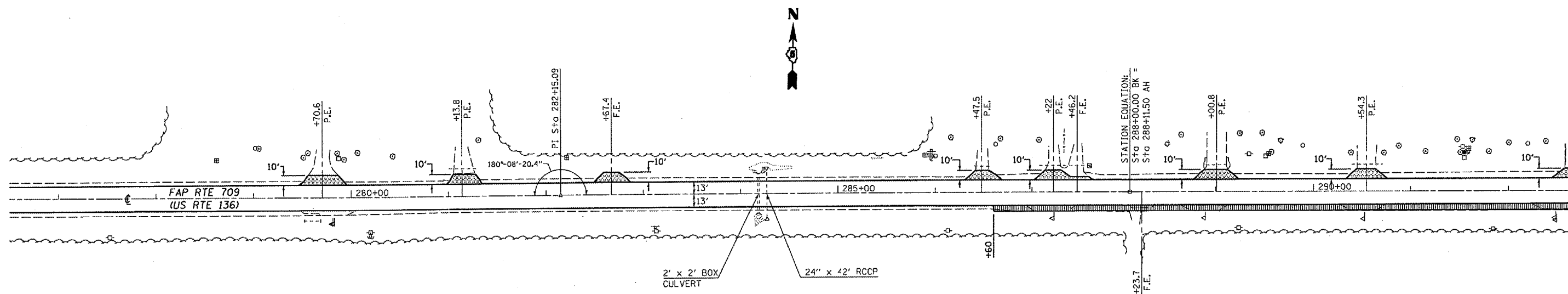
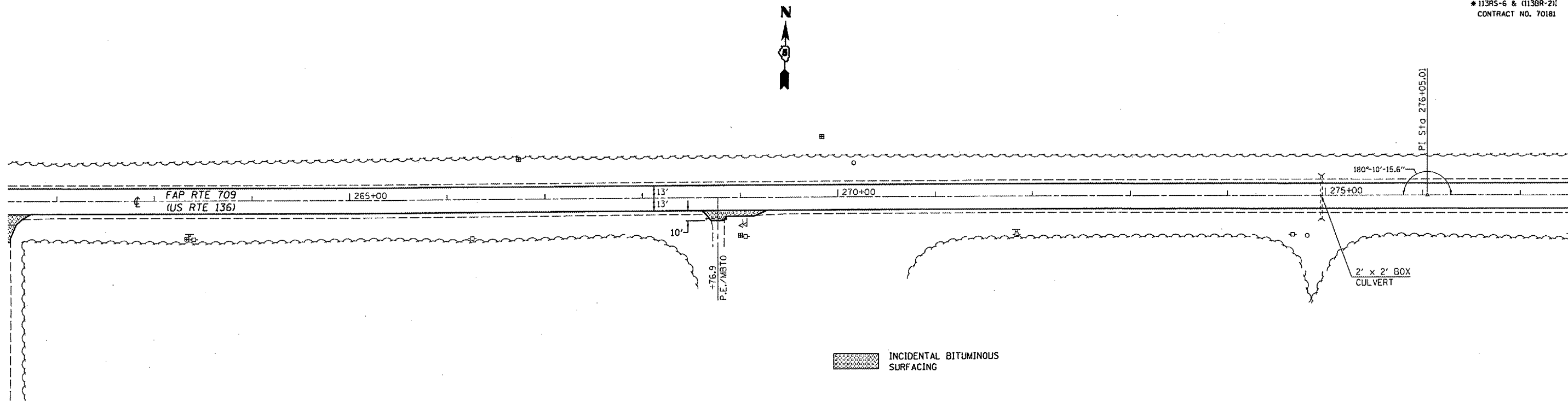
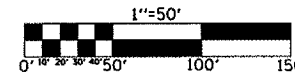


F.A.P. RTE.	SECTION	COUNTY	TOTAL SHEETS	SHEET NO.
709	*	CHAMPAIGN	64	34
STA. 262+00		TO STA. 292+00		
FED. ROAD DIST. NO.	ILLINOIS	FED. AID PROJECT		
* 113RS-6 & (113BR-2) CONTRACT NO. 70181				



- BITUMINOUS SHOULDERS SUPERPAVE 6"
- INCIDENTAL BITUMINOUS SURFACING

NOTE:  
WHILE CONSTRUCTING BITUMINOUS SHOULDERS 6", NO OPEN HOLES OR DROP-OFFS SHALL BE LEFT AT THE END OF EACH WORK DAY.



ILLINOIS DEPARTMENT OF TRANSPORTATION  
**PLAN VIEW**  
F.A.P. ROUTE 709 (US RTE 136)  
SECTION 113RS-6 & (113BR-2)  
CHAMPAIGN COUNTY

SCALE: 1"=50'  
DATE 08/23/04

DRAWN BY: CADD  
CHECKED BY: