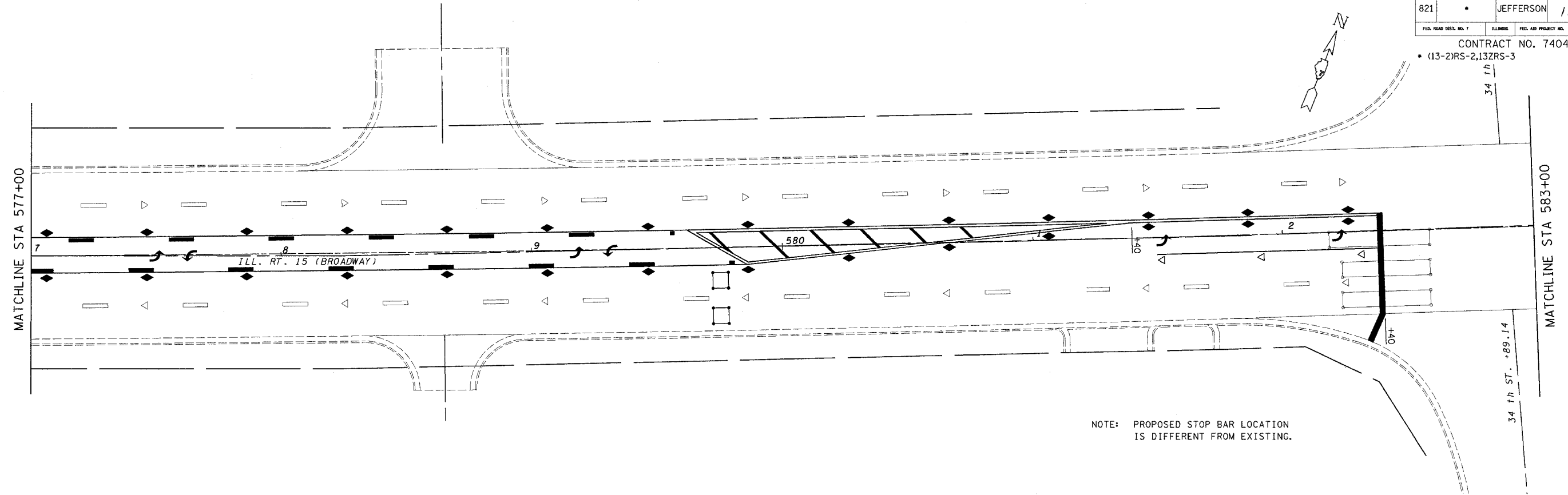


steffenmk
 10/26/2004
 c:\projects\74048d\02904pa.dgn

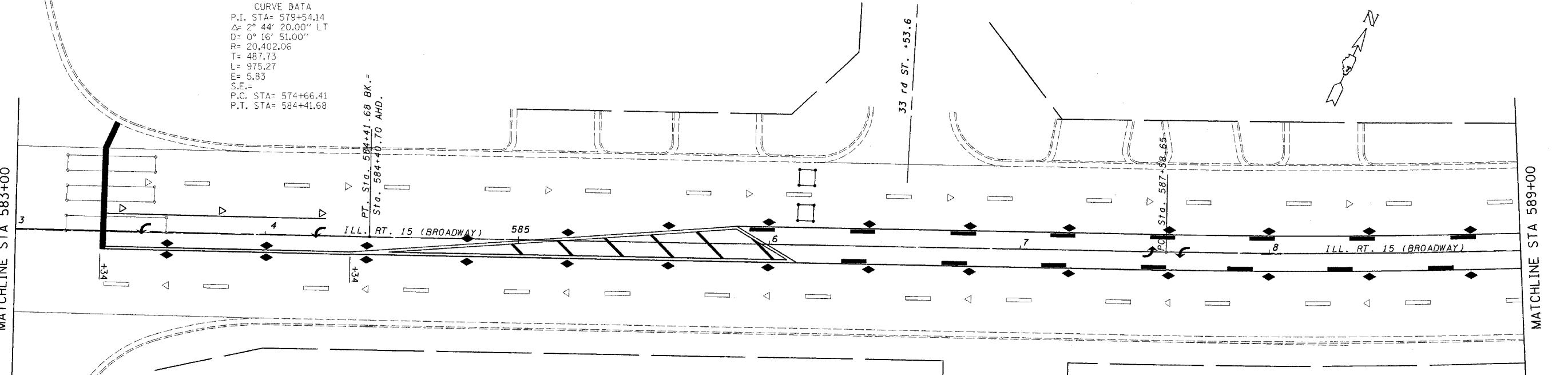
FAP NO.	SECTION	COUNTY	TOTAL SHEETS	SHEET NO.
821		JEFFERSON	11	8
FED. ROAD DIST. NO. 7		ILLINOIS	FED. AID PROJECT NO.	

CONTRACT NO. 74048
 (13-2)RS-2,13ZRS-3



NOTE: PROPOSED STOP BAR LOCATION IS DIFFERENT FROM EXISTING.

CURVE DATA
 P.I. STA= 579+54.14
 Δ= 2° 44' 20.00" LT
 D= 0° 16' 51.00"
 R= 20,402.06
 T= 487.73
 L= 975.27
 E= 5.83
 P.C. STA= 574+66.41
 P.T. STA= 584+41.68



NOTE: PROPOSED STOP BAR LOCATION IS DIFFERENT FROM EXISTING.

REVISIONS	
NAME	DATE

ILLINOIS DEPARTMENT OF TRANSPORTATION

**STA. 577 + 00
 TO
 STA. 589 + 00**

SCALE: VERT.
 HORIZ.
 DATE

DRAWN BY
 CHECKED BY