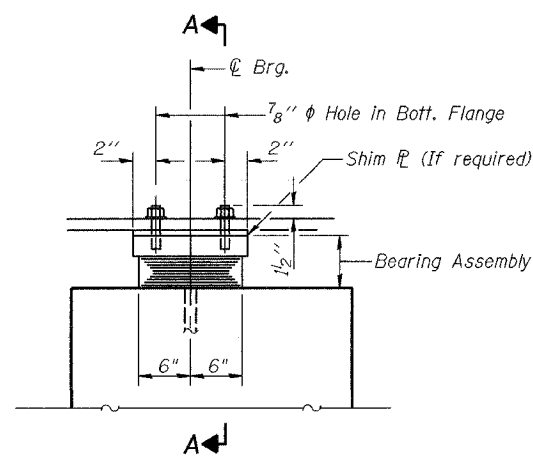


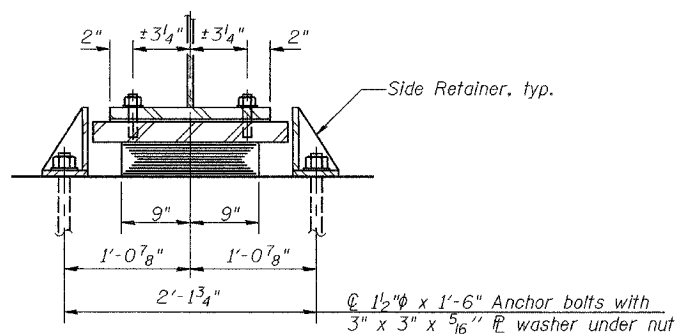
STATE OF ILLINOIS
DEPARTMENT OF TRANSPORTATION

| | | | | | |
|-----------------------|----------|------------------|--------|-------|--------------|
| ROUTE NO. | SECTION | COUNTY | SHEETS | SHEET | SHEET NO. 15 |
| F.A.P. 312 | 71BR | RANDOLPH | 73 | 39 | 31 SHEETS |
| FED. ROAD DIST. NO. 7 | ALLIANCE | FED. AID PROJECT | | | |

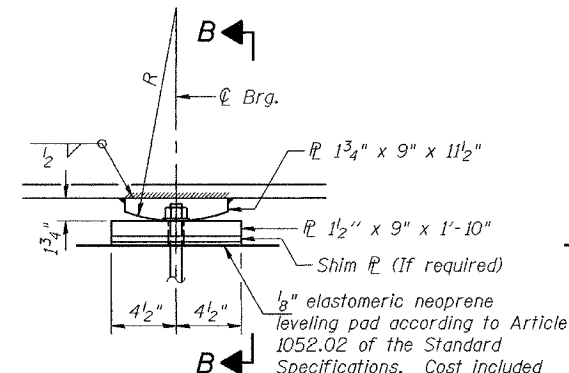
Contract No. 76125



ELEVATION AT PIER 2



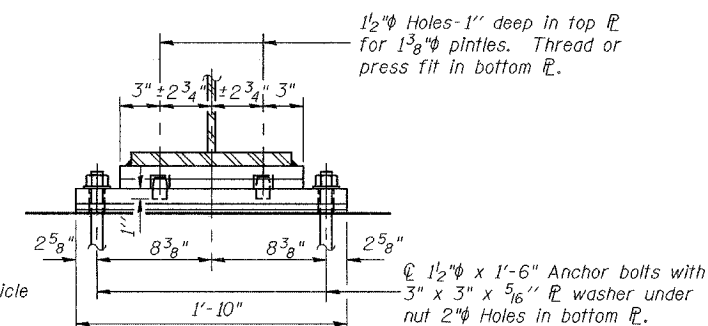
SECTION A-A



ELEVATION AT PIER 1

FIXED BEARING

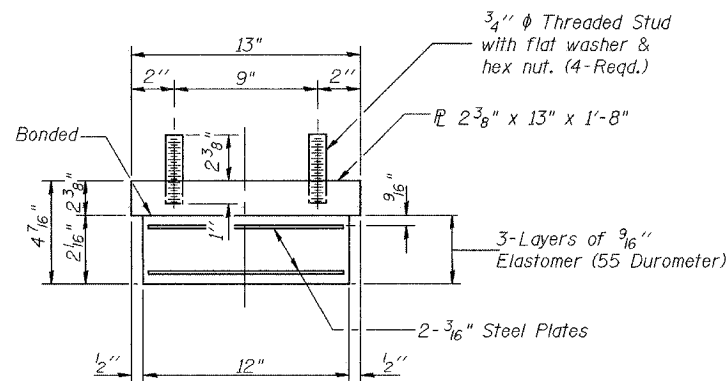
6 Required



SECTION B-B

TYPE I ELASTOMERIC EXP. BRG.

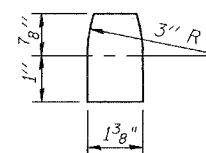
Notes: See sheet 16 of 31 for Anchor Bolt installation.



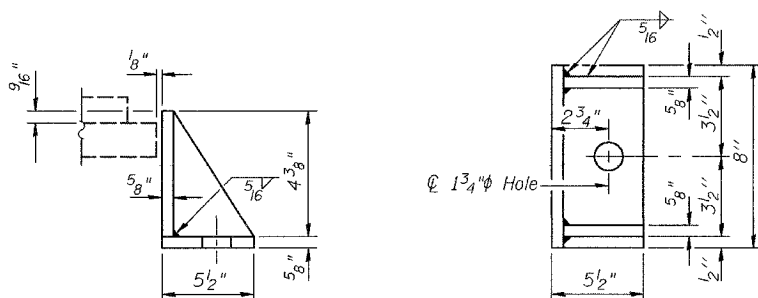
BEARING ASSEMBLY

Note: Shim plates shall not be placed under Bearing Assembly.

Notes:
Provide a shim plate 1/4" thick for beam #4 at Pier 1 and Pier 2.
The Structural Steel including Pintles for the fixed bearings shall conform to the requirements of AASHTO M270 Grade 50.



PINTLE



SIDE RETAINER

Equivalent rolled angle with stiffeners will be allowed in lieu of welded plates. Weight included with Structural Steel.

| | |
|----------|-----------------|
| DESIGNED | J.E. Kramer |
| CHECKED | T.L. Kurtenbach |
| DRAWN | A.M. Seiber |
| CHECKED | JEK/TLK |

| | |
|----------|--|
| EXAMINED | January 26, 2005 <i>Thomas J. Domagala</i> ENGINEER OF BRIDGE DESIGN |
| PASSED | <i>Ralph E. Anderson</i> ENGINEER OF BRIDGES AND STRUCTURES |

I-2-E1 09-01-03

BILL OF MATERIAL

| Item | Unit | Total |
|-------------------------------------|------|-------|
| Elastomeric Bearing Assembly Type I | Each | 6 |

PIER BEARING DETAILS
F.A.P. RT. 312 - SEC. 71BR
RANDOLPH COUNTY
STATION 1128+90
STRUCTURE NO. 079-0048