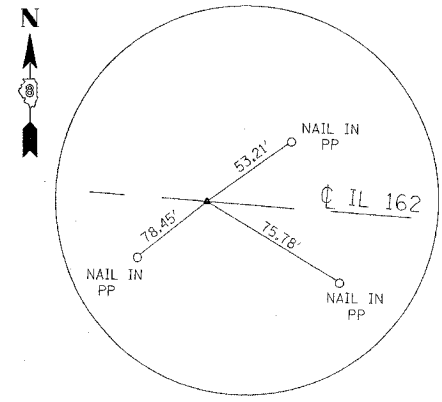
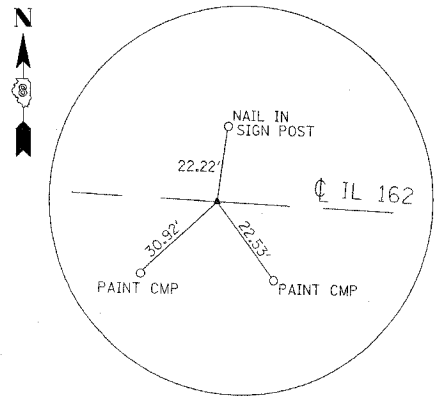


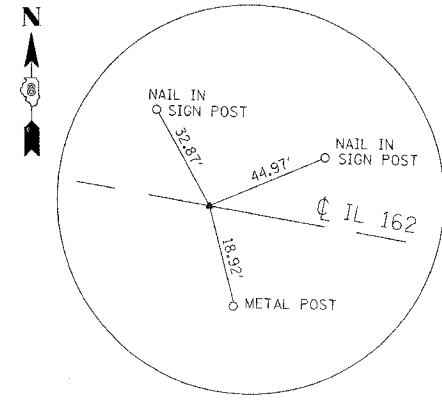
NAIL IN PAVEMENT
PT STA. 698+38.29
N 747,886.37 E 2,387,281.20



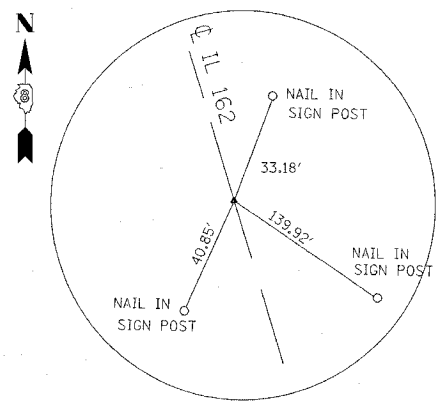
NAIL IN PAVEMENT
PC STA. 705+01.65
N 747,793.10 E 2,387,937.97



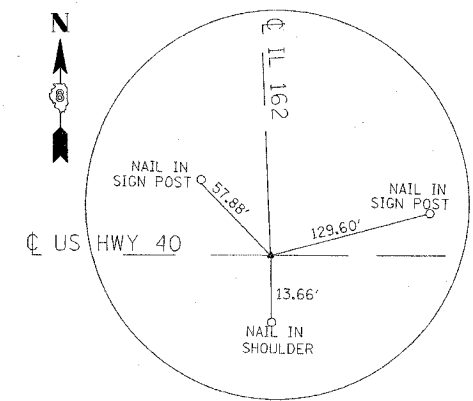
NAIL IN PAVEMENT
PT STA. 709+85.57
N 747,607.47 E 2,388,379.30



NAIL IN PAVEMENT
PC STA. 717+60.23
N 747,137.52 E 2,388,995.13



NAIL IN PAVEMENT
PT STA. 718+69.98
N 747,043.64 E 2,389,045.26



NAIL IN PAVEMENT
POT STA. 100+00.00 (US HWY 40)
N 746,968.18 E 2,389,049.95

BENCHMARKS

- BM 2020-8 CUT " □ " ON SIDEWALK @ SE CORNER OF AMERICAN LEGION POST 708 BUILDING - NW CORNER OF IL 162 & MAIN ST. ELEV. 563.60'
- BM 2020-9 CUT " X " ON SOUTH FLANGE BOLT ON FIRE HYDRANT @ NW CORNER OF MARKER ST. AND DEWEY ST. ELEV. 548.33'
- BM 2020-10 CUT " □ " ON SE CORNER OF CONC. SLAB FOR ABANDONED U.S. POSTAL MAILBOX @ NE CORNER OF IL 162 & MARY DR. ELEV. 542.40'
- BM 2020-11 CUT " □ " ON CONC. RIM OF MANHOLE IN FROM HOUSE #502, NORTH SIDE OF IL 162, ACROSS FROM WEST ENT. TO FRIEDENS CEMETERY ELEV. 539.42'
- BM 2020-12 CUT " X " ON NORTH FLANGE BOLT OF FIRE HYDRANT @ SW CORNER OF IL 162 & BRENTMOOR DRIVE ELEV. 538.39'
- BM 2020-13 CUT " □ " ON HEADWALL @ SOUTH SIDE OF IL 162 APPROXIMATELY 150 EAST OF BIT. DIRVEWAY (HOUSE #8752) ELEV. 524.25
- BM 2020-14 CUT " □ " @ NORTH END OF DROP INLET, NW CORNER OF IL 162 & HWY 40 ELEV. 464.23'
- BM 2020-14A CUT " □ " @ EAST END OF OLD HANDRAIL, NORTH SIDE OF HWY 40, APPROXIMATELY 150' WEST OF RUSTIC LANE, APPROXIMATELY 58" FROM EP ELEV. 460.09'
- BM 2020-15 CUT " □ " ON HANDRAIL OF HWY 40 BRIDGE OVER SILVER CREEK, EAST END - SOUTH SIDE BRDIGE #060-0077 ELEV. 463.19'

PLAN	SURVEYED	DATE
NOTE BOOK	PLOTTED & CHECKED	BY
NO.	BY	DATE
	BY	DATE
	BY	DATE

REVISIONS	
NAME	DATE

ILLINOIS DEPARTMENT OF TRANSPORTATION
ALIGNMENT TIE POINTS
AND BENCHMARKS
FAP ROUTE 586 (IL 162)
SECTION 60R-2, 37R-1
MADISON COUNTY
DRAWN BY:
PLOT DATE: Friday July 02, 2004 @ 10:11:25 AM