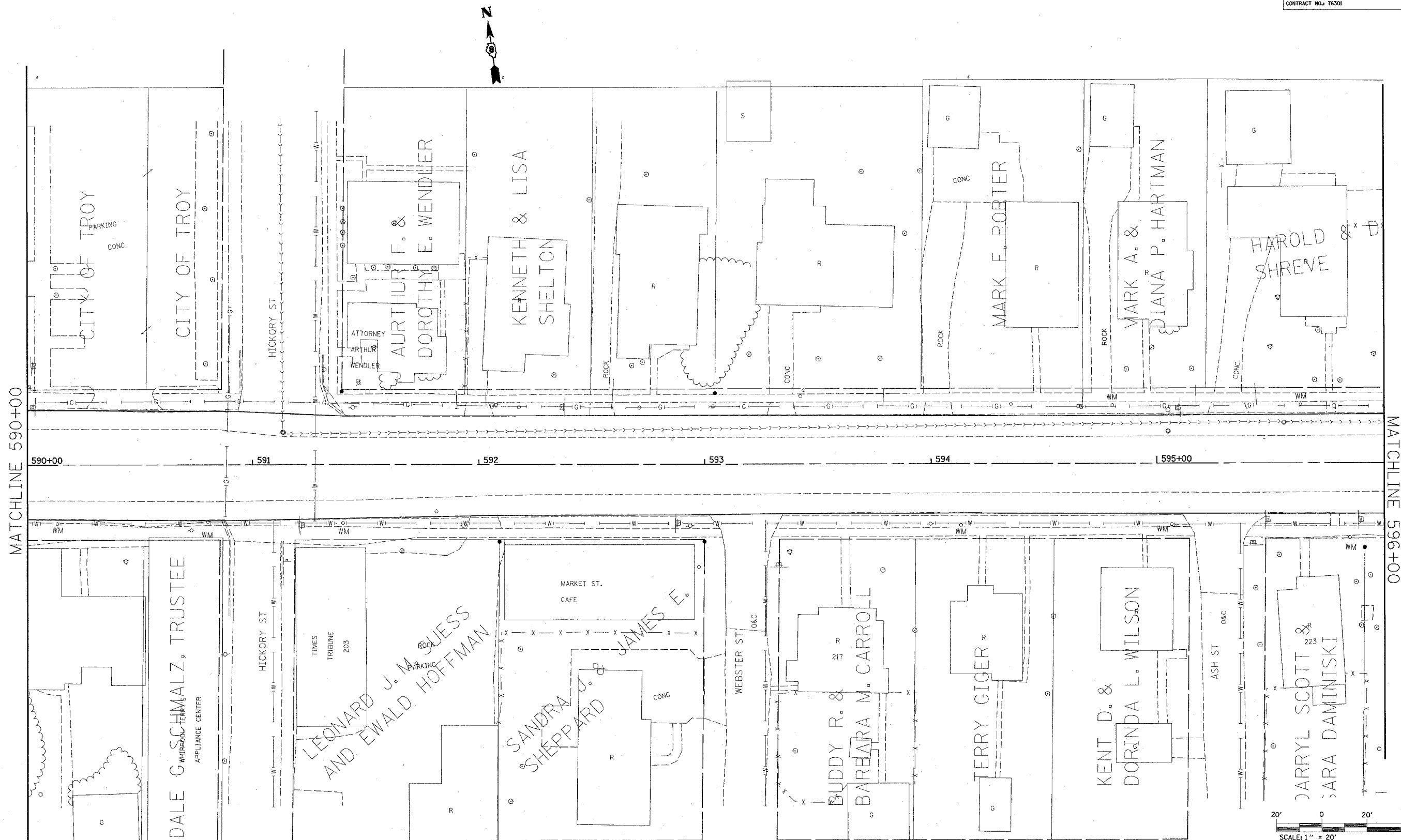


| FAP ROUTE           | SECTION      | COUNTY         | TOTAL SHEETS | SHEET NO. |
|---------------------|--------------|----------------|--------------|-----------|
| 586                 | 60R-2, 37R-1 | MADISON        | 502          | 64        |
| STA. 590+00         |              | TO STA. 596+00 |              |           |
| CONTRACT NO.: 76301 |              |                |              |           |

| PLAN      | DATE |
|-----------|------|
| REVISED   |      |
| NOTE BOOK |      |
| NO.       |      |



7/1/2004 2:04:50 PM  
 Thursday, July 01, 2004 @ 2:04:50 PM  
 C:\projects\586\586\plan\p0468.dgn L:\1\163  
 C:\projects\586\586\plan\p0468.dgn L:\1\163  
 C:\projects\586\586\plan\p0468.dgn L:\1\163  
 C:\projects\586\586\plan\p0468.dgn L:\1\163

| REVISIONS |      |
|-----------|------|
| NAME      | DATE |
|           |      |
|           |      |
|           |      |
|           |      |
|           |      |

ILLINOIS DEPARTMENT OF TRANSPORTATION  
**PLAN VIEW**  
 FAP 586  
 SECTION 60R-2, 37R-1  
 MADISON COUNTY  
 DRAWN BY:

