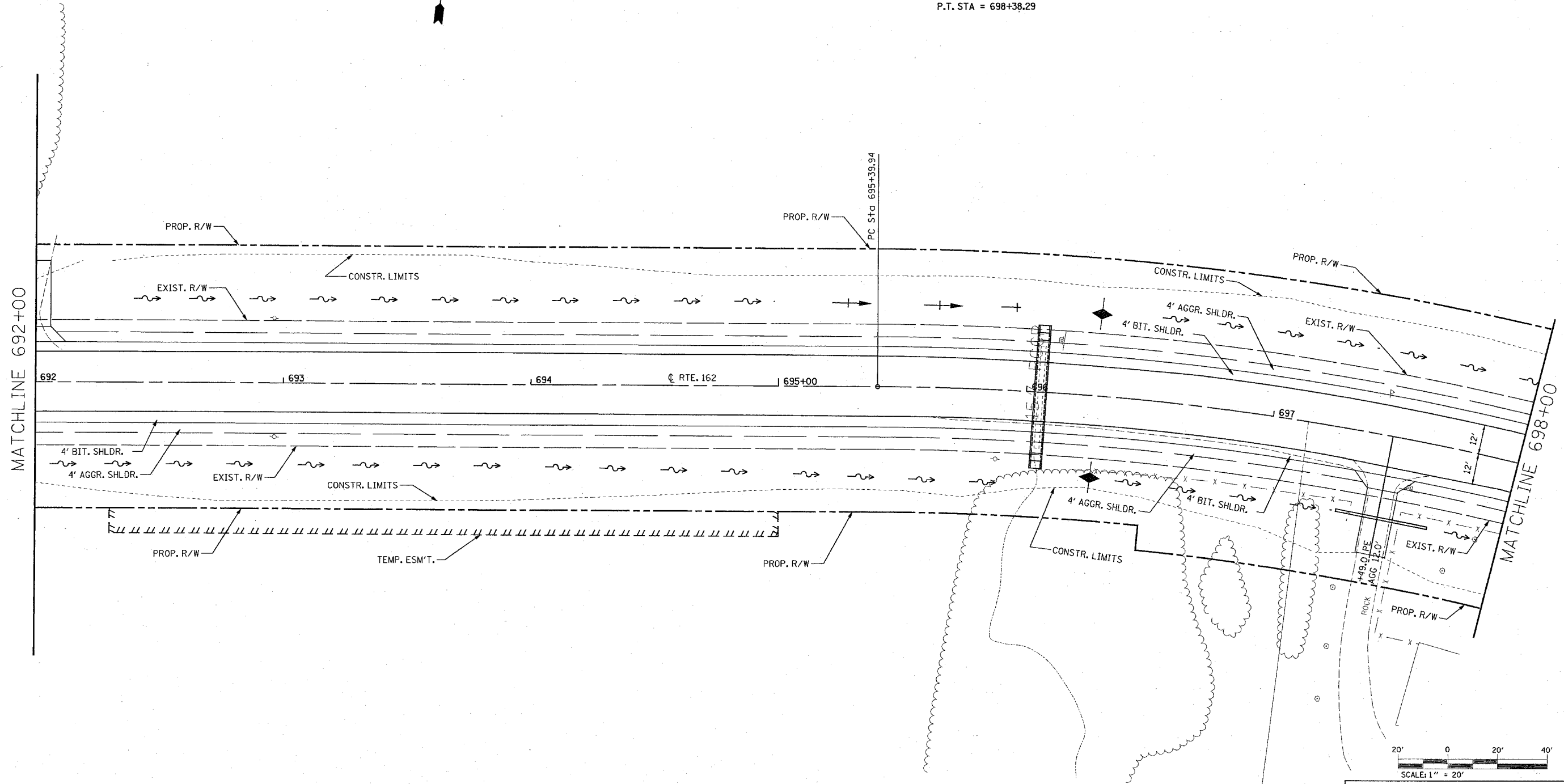


F&P NO.	SECTION	COUNTY	TOTAL SHEETS	SHEET NO.
586	60R-2, 37R-1	MADISON	502	82
STA. 692+00		TO STA. 698+00		
CONTRACT NO.: 76301				

PI STA. = 696+89.94
 $\Delta = 14^\circ 43' 27''$ (RT)
 $D = 4^\circ 56' 07''$
 $R = 1,160.95'$
 $T = 150.00'$
 $L = 298.35'$
 $E = 9.65'$
 $e =$
 $T.R. =$
 $S.E. RUN =$
 $P.C. STA = 695+39.94$
 $P.T. STA = 698+38.29$



PLAN NO.	BY	DATE
SURVEYED	CHECKED	
ALIGNED	CHECKED	
CALC.	CHECKED	
CAD FILE NAME		



REVISIONS	
NAME	DATE

ILLINOIS DEPARTMENT OF TRANSPORTATION
PLAN VIEW
 FAP 586
 SECTION 60R-2, 37R-1
 MADISON COUNTY
 DRAWN BY:

7/1/2004 2:04:43 PM
 Thursday July 01, 2004 @ 2:04:43 PM
 C:\projects\60R-2\37R-1\plan\plan.dwg L:\603
 C:\projects\60R-2\37R-1\plan\plan.dwg L:\603
 C:\projects\60R-2\37R-1\plan\plan.dwg L:\603

PLOT DATE: Thursday July 01, 2004 @ 2:04:43 PM