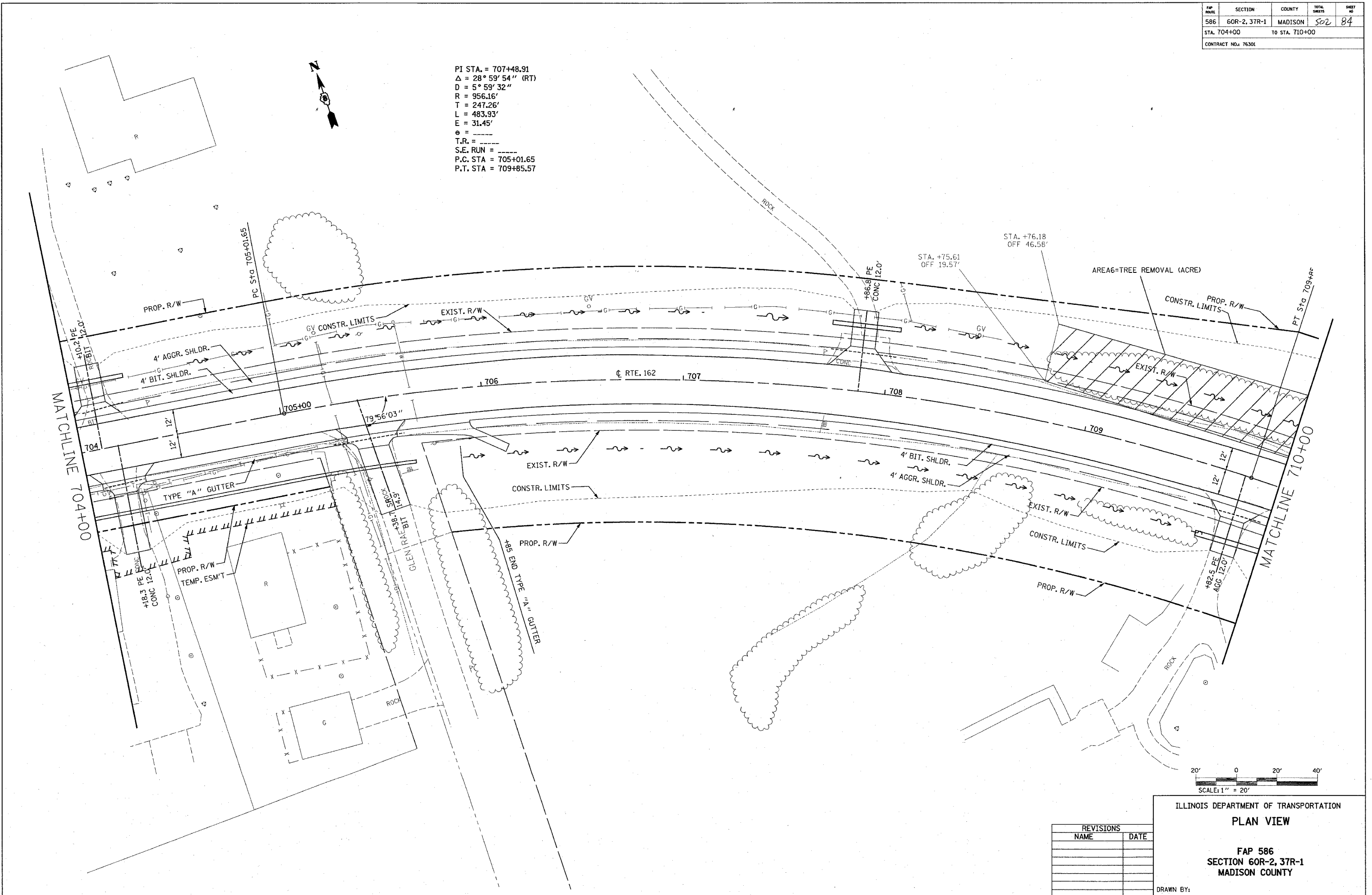


FAP ROUTE	SECTION	COUNTY	TOTAL SHEETS	SHEET NO
586	60R-2, 37R-1	MADISON	502	84
STA. 704+00		TO STA. 710+00		
CONTRACT NO.: 76301				

PI STA. = 707+48.91
 $\Delta = 28^\circ 59' 54''$ (RT)
 $D = 5^\circ 59' 32''$
 $R = 956.16'$
 $T = 247.26'$
 $L = 483.93'$
 $E = 31.45'$
 $e =$ -----
 T.R. = -----
 S.E. RUN = -----
 P.C. STA = 705+01.65
 P.T. STA = 709+85.57

DATE	BY



REVISIONS	
NAME	DATE

ILLINOIS DEPARTMENT OF TRANSPORTATION
PLAN VIEW
 FAP 586
 SECTION 60R-2, 37R-1
 MADISON COUNTY
 DRAWN BY:

PLOT DATE: Thursday July 01, 2004 2:04:43 PM

7/1/2004 1:21:04 PM
 C:\projects\road\plan\8101\8101.dgn
 C:\projects\road\plan\8101\8101.dgn
 C:\projects\road\plan\8101\8101.dgn
 C:\projects\road\plan\8101\8101.dgn