

F.A.I. RTE.	SECTION	COUNTY	TOTAL SHEETS	SHEET NO.
55,80	99-1(K, BY & AC-B)	WILL	502	1
FED. ROAD DIST. NO.	ILLINOIS	FED. AID PROJECT		
		CONTRACT NO.	80906	

STATE OF ILLINOIS
DEPARTMENT OF TRANSPORTATION
DIVISION OF HIGHWAYS

VOLUME 1 OF 2

FOR INDEX OF SHEETS, SEE SHEET NO. 2

DESIGN DESIGNATION

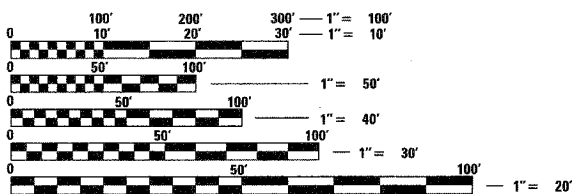
RAMPS = 550 (10) CONNECTOR AND LOOP RAMPS (RIGID-20)

TRAFFIC DATA

1987 ADT = 24,700 (F.A.I. 80)
29,900 (F.A.I. 55)
2010 ADT = 36,000 (F.A.I. 80)
40,000 (F.A.I. 55)

IMPROVEMENT LOCATED IN THE
TOWNSHIP OF TROY

J.U.L.I.E.
JOINT UTILITY LOCATION INFORMATION FOR EXCAVATION
1-800-892-0123
BP PIPELINES (NORTH AMERICA) INC.
1-800-548-6482



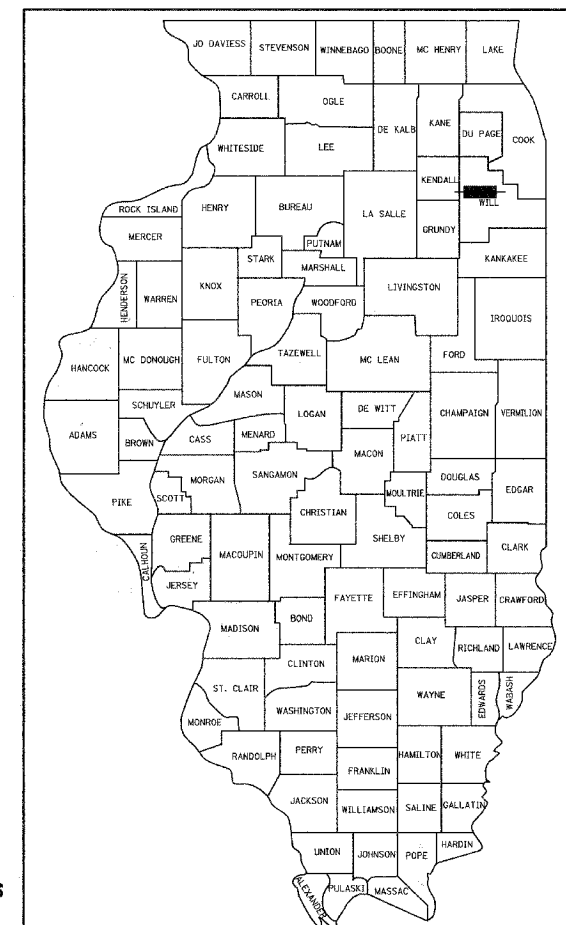
FULL SIZE PLANS HAVE BEEN PREPARED USING STANDARD ENGINEERING SCALES, REDUCED SIZED PLANS WILL NOT CONFORM TO STANDARD SCALES, IN MAKING MEASUREMENTS ON REDUCED PLANS, THE ABOVE SCALES MAY BE USED.

CONTRACT NO. 80906

PLANS FOR
PROPOSED HIGHWAY

SCALES PLAN 1:50
PROFILE HORIZ. 1:50
PROFILE VERT. 1:5
CROSS SECTIONS 1:10 HORIZONTAL, 1:5 VERTICAL

F.A.I. ROUTE 80 AT F.A.I. ROUTE 55
SECTION 99-1 (K, BY & AC-B) Proj. No. IM-080-4(184)126
INTERCHANGE RECONSTRUCTION
& FRONTAGE ROAD BRIDGE CONSTRUCTION
WILL COUNTY
C-91-425-90
PROJECT



LOCATION OF SECTION INDICATED THUS: -



DATE: 01/03/2005
SEAL EXPIRES: 11/30/2005
Matthew J. Stefan

SIGNATURE & SEAL APPLY TO SHEETS

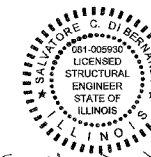
1 - 182
193 - 202
298 - 299
321 - 498



DATE: 01/03/05
Expires: 11/30/05

SIGNATURE & SEAL APPLY TO SHEETS

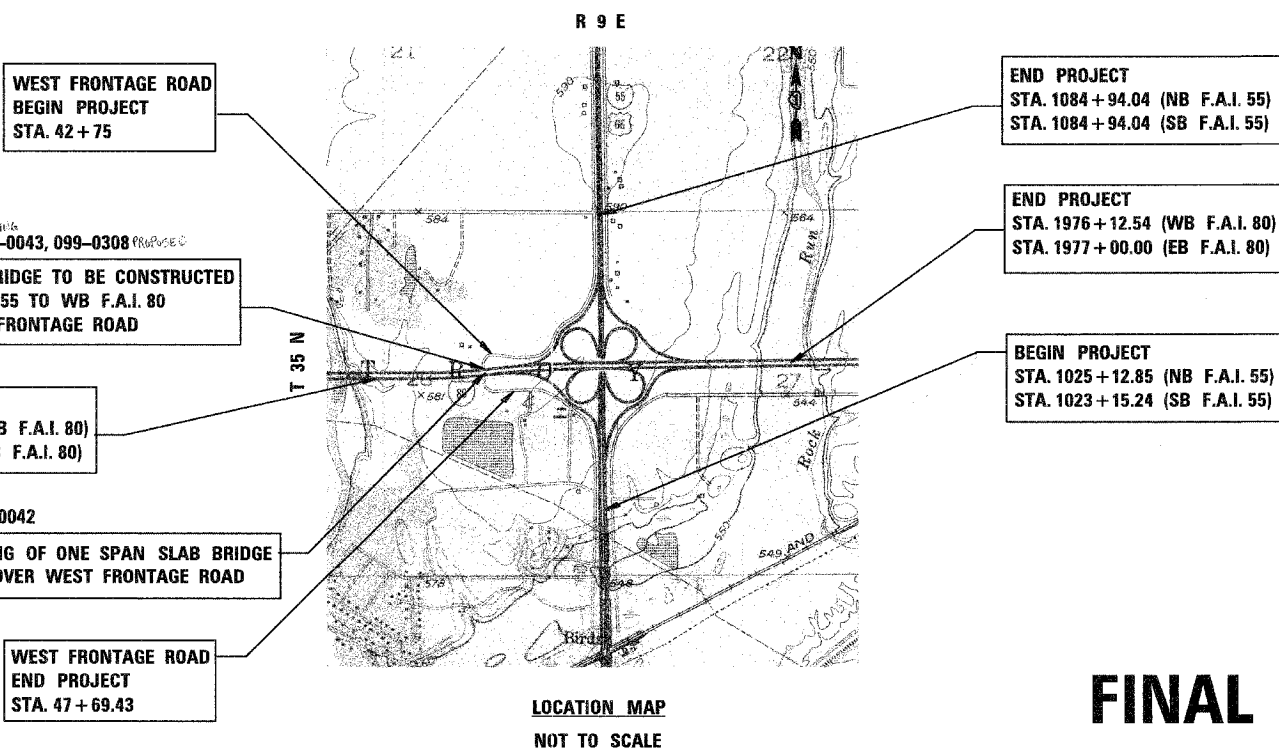
251 - 297



DATE: 01/03/2005
SEAL EXPIRES: 11/30/2005

SIGNATURE & SEAL APPLY TO SHEETS

300 - 320



WEST FRONTAGE ROAD
BEGIN PROJECT
STA. 42 + 75

STRUCTURE NO. 099-0043, 099-0308
ONE SPAN SLAB BRIDGE TO BE CONSTRUCTED
CARRYING SB F.A.I. 55 TO WB F.A.I. 80
RAMP OVER WEST FRONTAGE ROAD

BEGIN PROJECT
STA. 1917 + 48.22 (WB F.A.I. 80)
STA. 1927 + 04.09 (EB F.A.I. 80)

STRUCTURE NO. 099-0042
STRUCTURE WIDENING OF ONE SPAN SLAB BRIDGE
CARRYING F.A.I. 80 OVER WEST FRONTAGE ROAD

WEST FRONTAGE ROAD
END PROJECT
STA. 47 + 69.43

END PROJECT
STA. 1084 + 94.04 (NB F.A.I. 55)
STA. 1084 + 94.04 (SB F.A.I. 55)

END PROJECT
STA. 1976 + 12.54 (WB F.A.I. 80)
STA. 1977 + 00.00 (EB F.A.I. 80)

BEGIN PROJECT
STA. 1025 + 12.85 (NB F.A.I. 55)
STA. 1023 + 15.24 (SB F.A.I. 55)

LOCATION MAP
NOT TO SCALE

F.A.I. 80 GROSS AND NET LENGTH OF PROJECT = 10,860.23 FT = 2.06 MI.
F.A.I. 55 GROSS AND NET LENGTH OF PROJECT = 12,159.99 FT = 2.30 MI.
WEST FRONTAGE ROAD GROSS AND NET LENGTH OF PROJECT = 494.43 FT = 0.09 MI.

FINAL

STATE OF ILLINOIS
DEPARTMENT OF TRANSPORTATION
DIVISION OF HIGHWAYS

SUBMITTED JANUARY 5 20 05

Dina Okupe DISTRICT ENGINEER

February 4, 20 05
Mike Stone ENGINEER OF DESIGN AND ENVIRONMENT

February 4, 20 05
Victor Maden DIRECTOR, DIVISION OF HIGHWAYS

Ciorba Group, Inc.

DESIGN FIRM
REGISTRATION NUMBER
184-001016

CONSULTING ENGINEERS
SUITE 402, 5507 NORTH CUMBERLAND AVE
CHICAGO, ILLINOIS 60656 ☎ (773) 775-4009

CONSULTANT PROJECT MANAGER - CATHERINE KIBBLE, (847) 705-4269