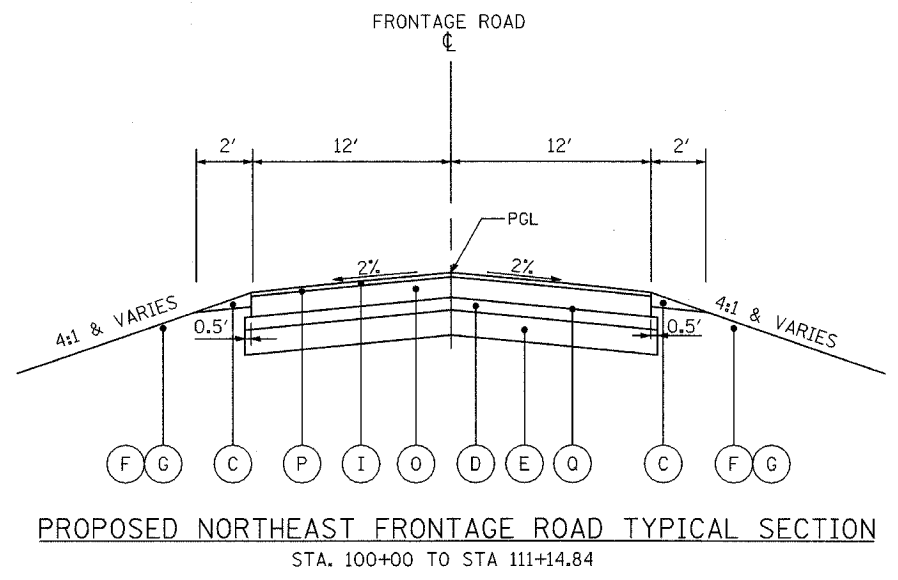
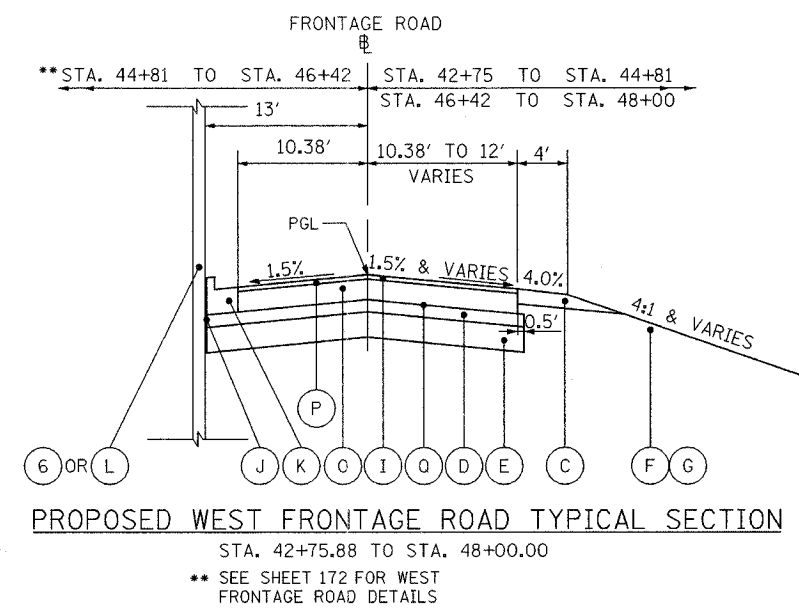
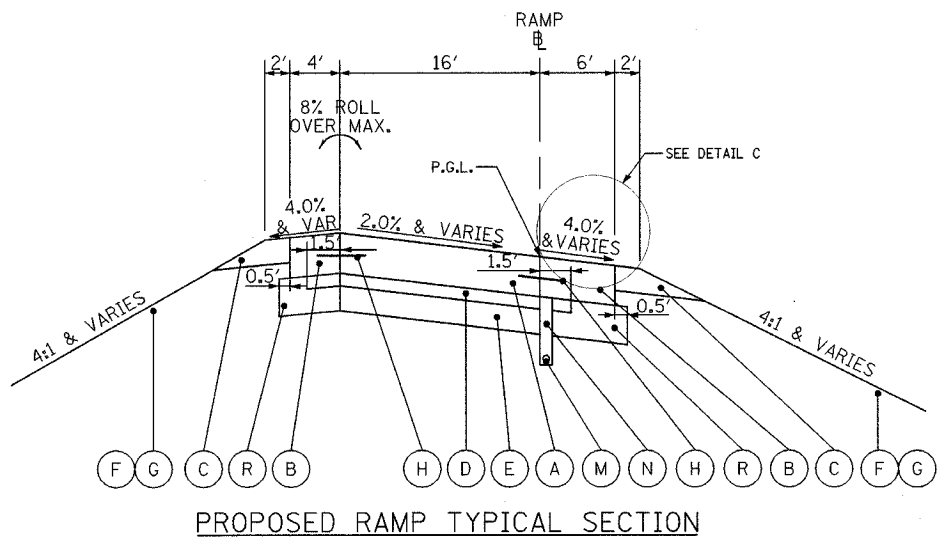
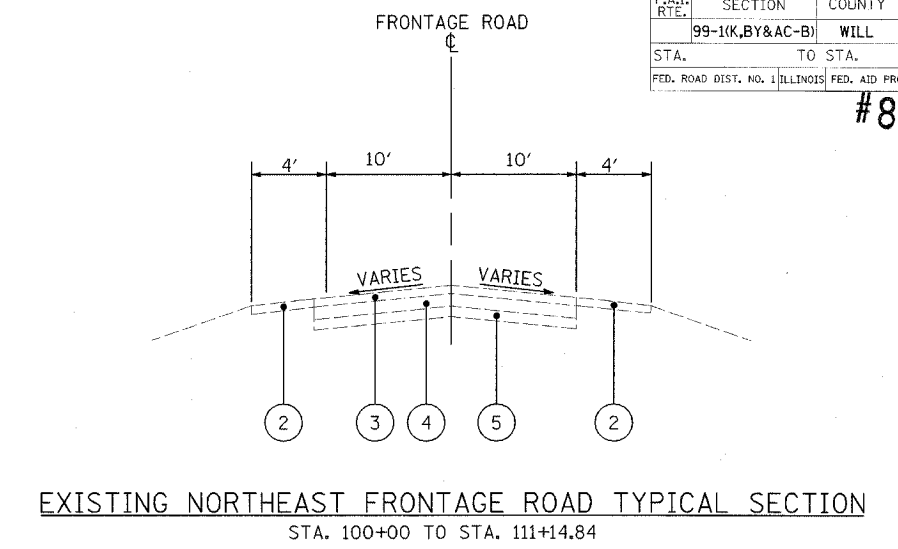
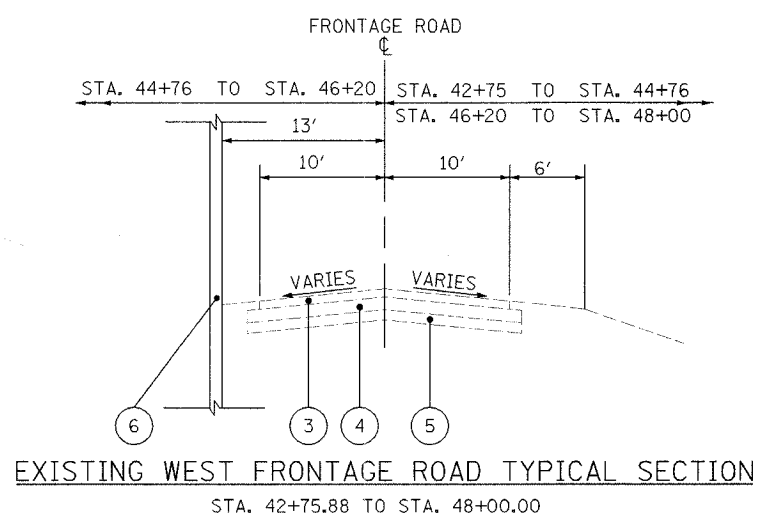
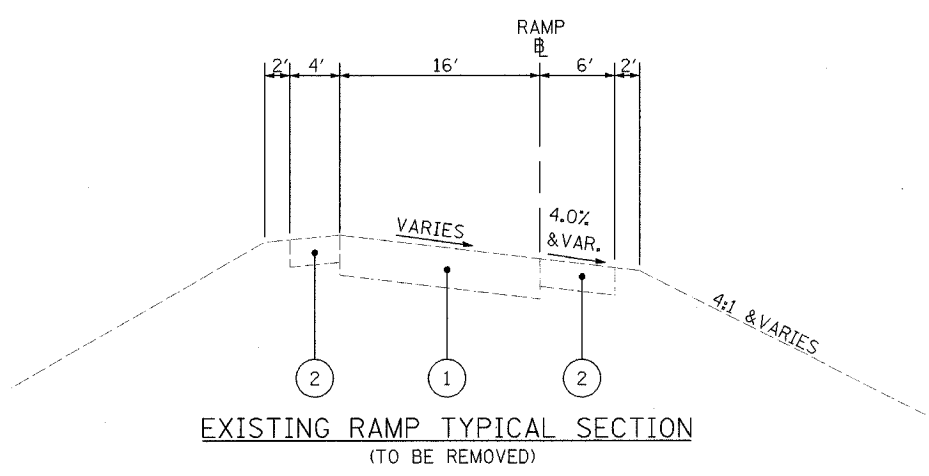


#80906



- RAMP A STA. 13+30.17 TO STA. 45+46.55
- RAMP B STA. 1+85.58 TO STA. 15+41.20
- RAMP C STA. 13+99.72 TO STA. 44+38.23
- RAMP D STA. 2+29.35 TO STA. 15+79.49
- RAMP E STA. 13+79.16 TO STA. 42+38.86
- RAMP F STA. 1+81.74 TO STA. 15+97.30
- RAMP G STA. 13+61.87 TO STA. 41+47.14
- RAMP H STA. 1+95.57 TO STA. 14+94.85

EXISTING LEGEND

- ① EXISTING CONCRETE PAVEMENT, (10"±) WITH BITUMINOUS OVERLAY
- ② EXISTING BITUMINOUS SHOULDER
- ③ EXISTING BITUMINOUS CONCRETE SURFACE, 3"±
- ④ EXISTING GRAVEL BASE COURSE, 6"±
- ⑤ EXISTING GRANULAR SUB-BASE, 4"±
- ⑥ EXISTING RETAINING WALL OR BRIDGE ABUTMENT

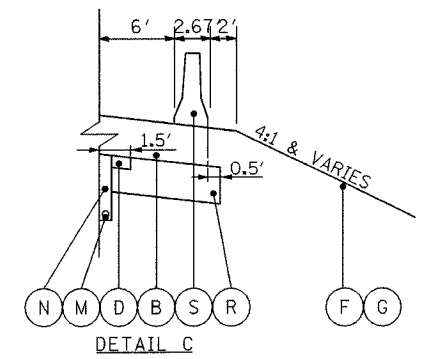
PROPOSED LEGEND

- A PORTLAND CEMENT CONCRETE PAVEMENT, 11½" (JOINTED)
- B PORTLAND CEMENT CONCRETE SHOULDER 11½"
- C AGGREGATE SHOULDER, TYPE B, 6"
- D STABILIZED SUB-BASE, 4"
- E AGGREGATE SUBGRADE, 12"
- F SEEDING, CLASS 2A
- G TOPSOIL PLACEMENT 4"
- H #6 EPOXY COATED TIE BARS AT 24" CENTER
- I BITUMINOUS CONCRETE SURFACE COURSE, SUPERPAVE, MIX D, N50, 2"
- J ½" PREFORMED EXPANSION JOINT FILLER (INCLUDED IN COMB. CONC. CURB AND GUTTER, TYPE B-6.24)

- K COMBINATION CONCRETE CURB AND GUTTER, TYPE B-6.24**
- L PROPOSED RETAINING WALL OR BRIDGE ABUTMENT
- M PIPE UNDERDRAINS 6"
- N POROUS GRANULAR BACKFILL
- O BITUMINOUS CONCRETE BINDER COURSE, SUPERPAVE, IL-19, N70, 7"
- P BITUMINOUS MATERIALS (PRIME COAT)
- Q AGGREGATE (PRIME COAT)
- R AGGREGATE SUBGRADE, 16"
- S CONCRETE BARRIER, DOUBLE FACE, 32 INCH HEIGHT

STRUCTURE DESIGN INFORMATION FOR RAMP PAVEMENT

STRUCTURAL DESIGN FACTOR:	YEAR 2020
PV = 6.924	SU = 418 MU = 2,382
ROAD/STREET CLASSIFICATION:	CLASS 1
PERCENT OF STRUCTURAL DESIGN TRAFFIC IN DESIGN LANE:	P = 100% S = 100% M = 100%
TRAFFIC FACTOR:	ACTUAL TF = 51.61 AC TYPE = N/A
	MINIMUM TF = 33.50
AC GRADE: SURFACE = N/A	BINDER = N/A
SUBGRADE SUPPORT RATING:	SSR = 2.00
	IBR = 2.00



RAMP C
STA. 38+63.12 TO STA. 41+11.12

REVISIONS	
NAME	DATE

STATE OF ILLINOIS
DEPARTMENT OF TRANSPORTATION
F.A.I. 80 & F.A.I. 55 INTERCHANGE
WEST FRONTAGE ROAD, NORTHEAST FRONTAGE ROAD AND RAMP EXISTING AND PROPOSED TYPICAL SECTIONS
SCALE: NTS
DATE: JANUARY, 2005
DRAWN BY: KDM
CHECKED BY: MJL