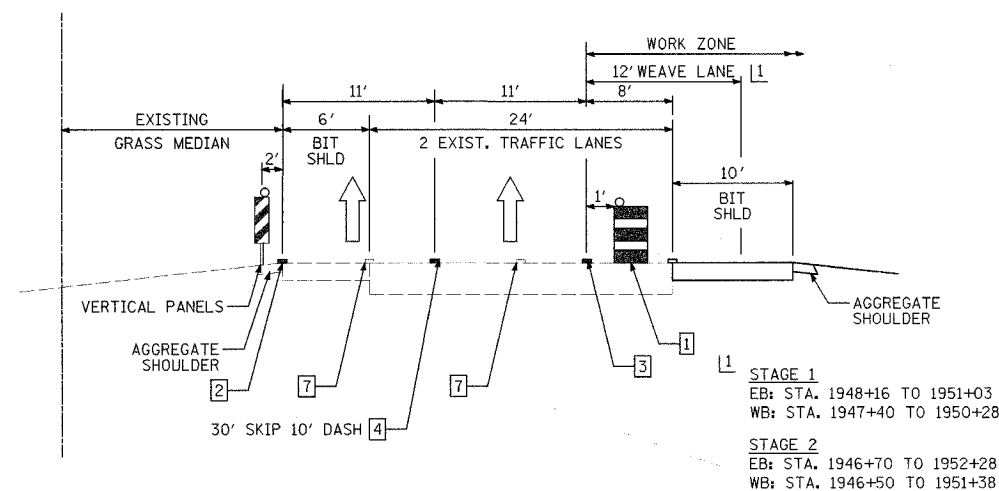


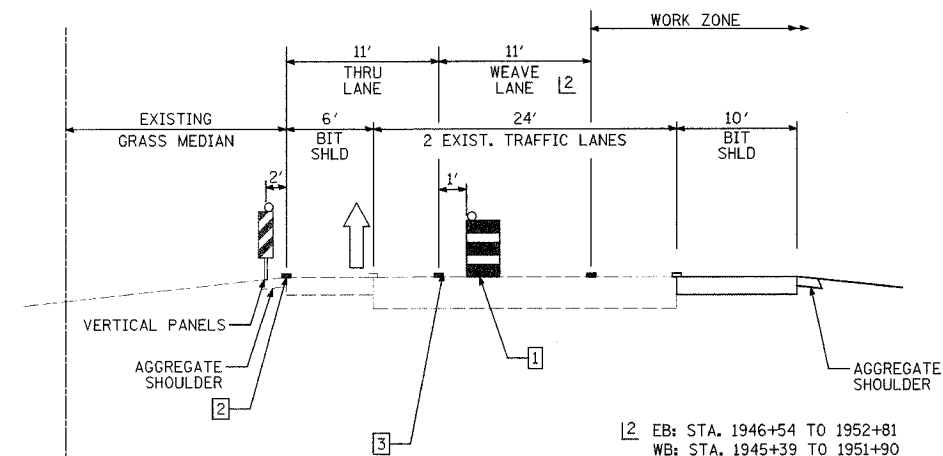
F.A.I. ROUTE	SECTION	COUNTY	TOTAL SHEETS	SHEET NO.
80-55	99-1K, BY&AC-BJ	WILL	497	74
STA.	TO STA.		FED. AID PROJECT	
FED. ROAD DIST. NO. 1	ILLINOIS	CONTRACT NO. 80906		

☐ F.A.I. 80

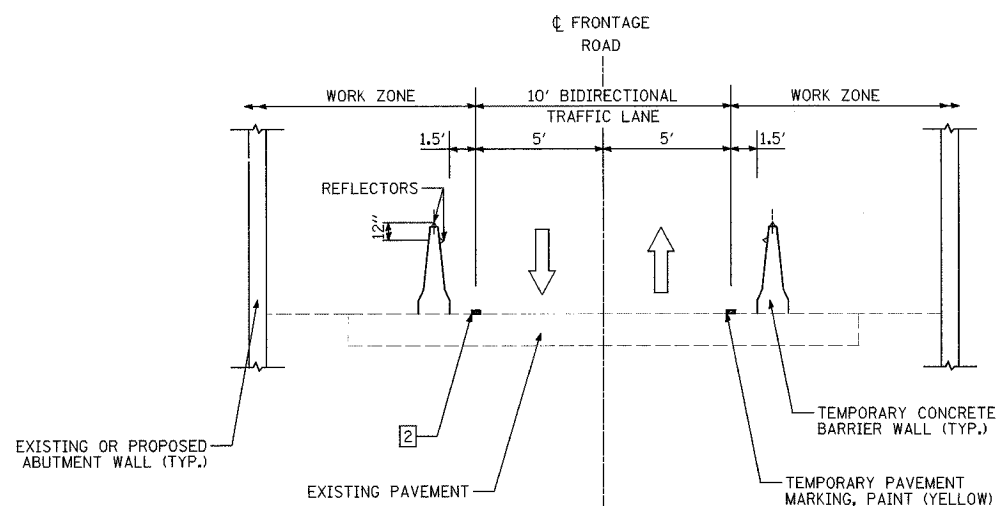


F.A.I. 80 STAGES 1, 2, AND 3

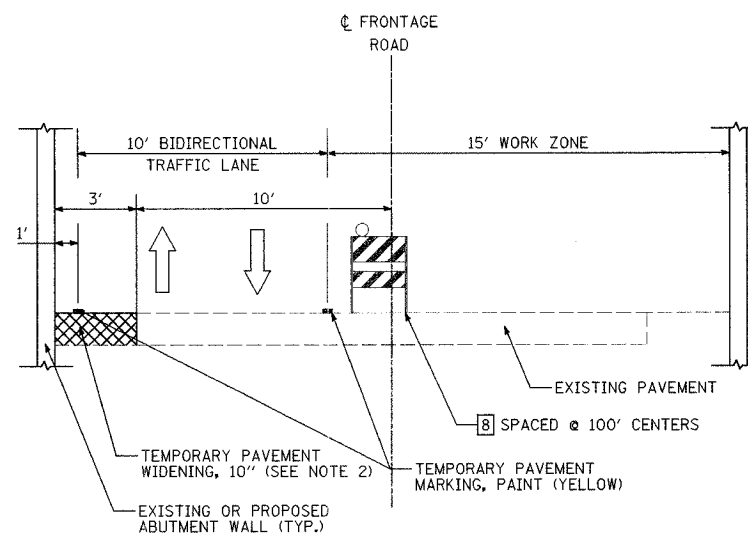
☐ F.A.I. 80



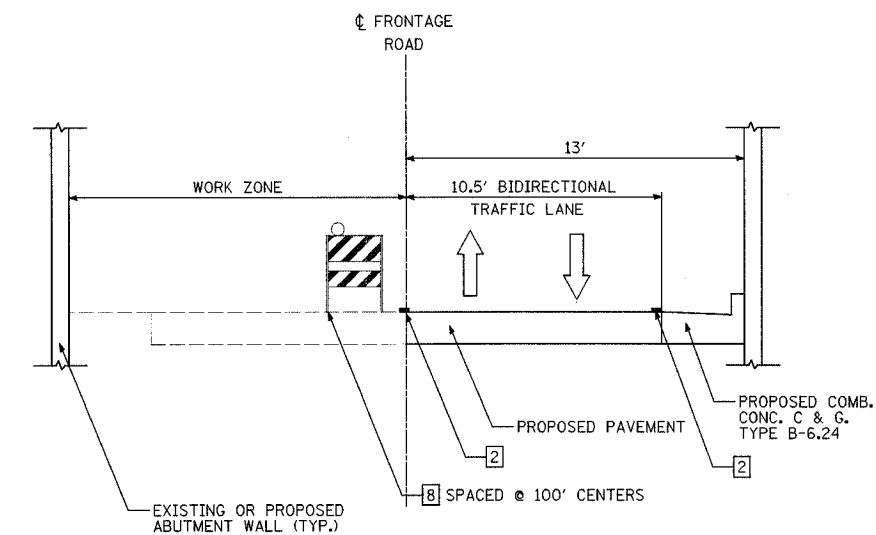
F.A.I. 80 STAGE 3A AND 3B
WEEKEND ONLY



FRONTAGE ROAD TYPICAL SECTION
F.A.I. 80 STAGE 1



FRONTAGE ROAD TYPICAL SECTION
F.A.I. 80 STAGE 2A



FRONTAGE ROAD TYPICAL SECTION
F.A.I. 80 STAGE 2B

LEGEND

- ☐ 1 DRUM WITH STEADY BURNING LIGHT
- ☐ 2 PAVEMENT MARKING TAPE, TYPE III-(4 INCH), YELLOW
- ☐ 3 PAVEMENT MARKING TAPE, TYPE III-(4 INCH), WHITE
- ☐ 4 PAVEMENT MARKING TAPE, TYPE III-(5 INCH), WHITE
- ☐ 5 PAVEMENT MARKING TAPE, TYPE III-(8 INCH), WHITE
- ☐ 6 PAVEMENT MARKING TAPE, TYPE III-(12 INCH), WHITE
- ☐ 7 PAVEMENT MARKING REMOVAL (LINE)
- ☐ 8 BARRICADE OR DRUM WITH STEADY BURNING LIGHT

NOTES

- 1. RAISED PAVEMENT REFLECTOR LENS WHICH CONFLICT WITH TEMPORARY PAVEMENT MARKINGS SHALL BE REMOVED. THIS WORK SHALL BE INCLUDED IN THE COST TO THE CONTRACT UNIT PRICE FOR REPLACEMENT REFLECTORS.
- 2. TEMPORARY PAVEMENT WIDENING SHALL CONSIST OF 10" BITUMINOUS BASE COURSE. THE TEMPORARY PAVEMENT WIDENING SHALL MEET THE MATERIAL AND CONSTRUCTION REQUIREMENTS AND BE PAID FOR AT THE CONTRACT UNIT PRICE FOR TEMPORARY PAVEMENT, 10".
- 3. TEMPORARY INSIDE AGGREGATE SHOULDERS SHALL BE PLACED PRIOR TO THE INSTALLATION OF THE VERTICAL PANELS.
- 4. TYPE C MONO DIRECTIONAL REFLECTORS PLACED ON TANGENT PORTION OF BARRIER @ 50' CENTERS.
- 5. TRAFFIC CONTROL FOR THE FRONTAGE ROAD SHALL BE IN ACCORDANCE WITH STATE STANDARD 701316

REVISIONS	
NAME	DATE

STATE OF ILLINOIS
DEPARTMENT OF TRANSPORTATION
F.A.I. 80 & F.A.I. 55 INTERCHANGE
**TRAFFIC CONTROL
TYPICAL SECTIONS**

SCALE: N.T.S.
DATE: JANUARY, 2005

DRAWN BY: DLP
CHECKED BY: MJL