

F.A.I. ROUTE	SECTION	COUNTY	TOTAL SHEETS	SHEET NO.
80-55 99-1K, BY&AC-BJ	WILL		497	77
STA. 1761+10 TO STA. 1925+50		FED. ROAD DIST. NO. 1 ILLINOIS FED. AID PROJECT		
CONTRACT NO. 80906				

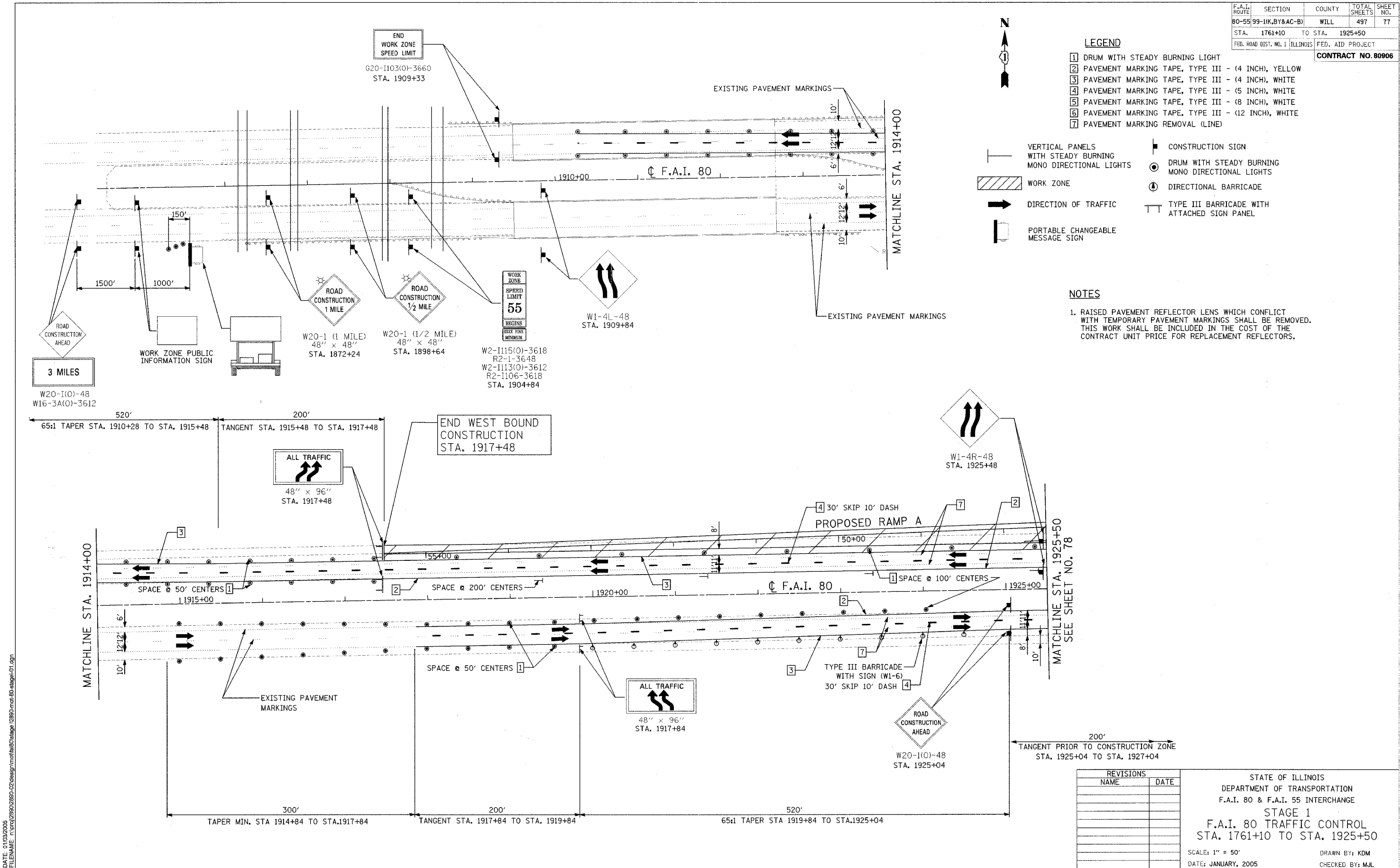
LEGEND

- 1 DRUM WITH STEADY BURNING LIGHT
- 2 PAVEMENT MARKING TAPE, TYPE III - (4 INCH), YELLOW
- 3 PAVEMENT MARKING TAPE, TYPE III - (4 INCH), WHITE
- 4 PAVEMENT MARKING TAPE, TYPE III - (5 INCH), WHITE
- 5 PAVEMENT MARKING TAPE, TYPE III - (8 INCH), WHITE
- 6 PAVEMENT MARKING TAPE, TYPE III - (12 INCH), WHITE
- 7 PAVEMENT MARKING REMOVAL (LINE)

- VERTICAL PANELS WITH STEADY BURNING MONO DIRECTIONAL LIGHTS
- WORK ZONE
- DIRECTION OF TRAFFIC
- PORTABLE CHANGEABLE MESSAGE SIGN
- CONSTRUCTION SIGN
- DRUM WITH STEADY BURNING MONO DIRECTIONAL LIGHTS
- DIRECTIONAL BARRICADE
- TYPE III BARRICADE WITH ATTACHED SIGN PANEL

NOTES

- 1. RAISED PAVEMENT REFLECTOR LENS WHICH CONFLICT WITH TEMPORARY PAVEMENT MARKINGS SHALL BE REMOVED. THIS WORK SHALL BE INCLUDED IN THE COST OF THE CONTRACT UNIT PRICE FOR REPLACEMENT REFLECTORS.



DATE: 01/03/2005
FILENAME: I:\03\28902890-C2\design\mch\80stage 12890-mch-80-stage-01.dgn

REVISIONS	
NAME	DATE

STATE OF ILLINOIS
DEPARTMENT OF TRANSPORTATION
F.A.I. 80 & F.A.I. 55 INTERCHANGE
STAGE 1
F.A.I. 80 TRAFFIC CONTROL
STA. 1761+10 TO STA. 1925+50

SCALE: 1" = 50'
DATE: JANUARY, 2005

DRAWN BY: KDM
CHECKED BY: MJL