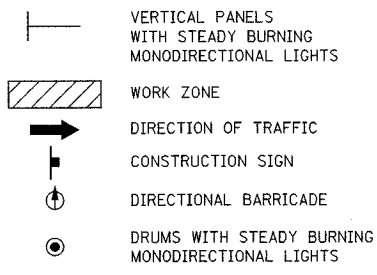
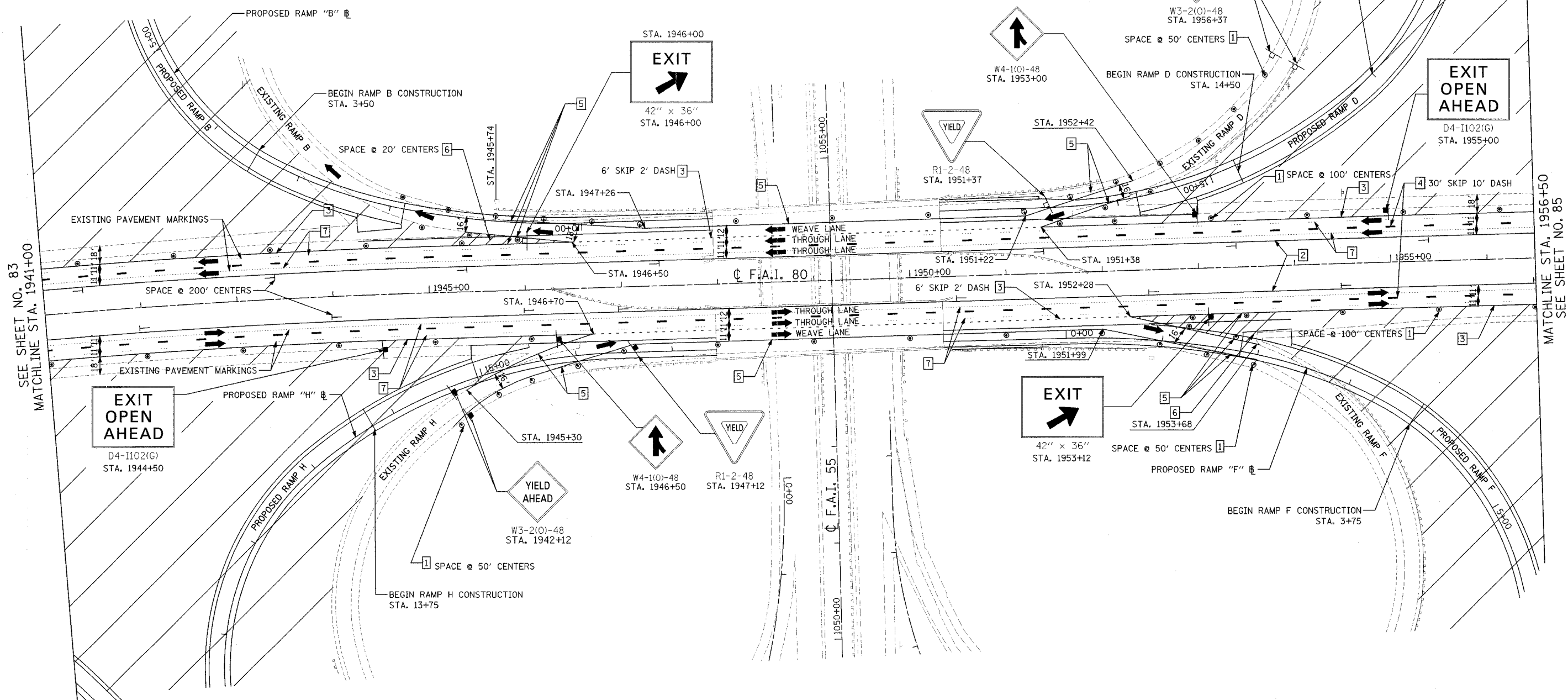
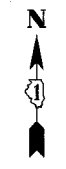


F.A.I. ROUTE	SECTION	COUNTY	TOTAL SHEETS	SHEET NO.
80-55	99-1(K, BY & AC-B)	WILL	497	84
STA. 1941+00 TO STA. 1956+50		FED. ROAD DIST. NO. 1 ILLINOIS FED. AID PROJECT		
CONTRACT NO. 80906				



- LEGEND**
- 1 DRUM WITH STEADY BURNING LIGHT
 - 2 PAVEMENT MARKING TAPE, TYPE III - (4 INCH), YELLOW
 - 3 PAVEMENT MARKING TAPE, TYPE III - (4 INCH), WHITE
 - 4 PAVEMENT MARKING TAPE, TYPE III - (5 INCH), WHITE
 - 5 PAVEMENT MARKING TAPE, TYPE III - (8 INCH), WHITE
 - 6 PAVEMENT MARKING TAPE, TYPE III - (12 INCH), WHITE
 - 7 PAVEMENT MARKING REMOVAL (LINE)

- NOTES**
1. RAISED PAVEMENT REFLECTOR LENS WHICH CONFLICT WITH TEMPORARY PAVEMENT MARKINGS SHALL BE REMOVED. THIS WORK SHALL BE INCLUDED IN THE COST TO THE CONTRACT UNIT PRICE FOR REPLACEMENT REFLECTORS.
 2. SEE STATE STANDARD 701411 FOR APPLICABLE RAMP SIGNING AND BARRICADE PLACEMENT IN ADDITION TO THE TRAFFIC CONTROL ITEMS SHOWN ON THIS SHEET.



SEE SHEET NO. 83
MATCHLINE STA. 1941+00

MATCHLINE STA. 1956+50
SEE SHEET NO. 85

DATE: 01/03/2005
FILENAME: I:\03\26503850-C2\design\mof\80\stage 1\2650-mt-80-stage1-08.dgn

REVISIONS	
NAME	DATE

STATE OF ILLINOIS
DEPARTMENT OF TRANSPORTATION
F.A.I. 80 & F.A.I. 55 INTERCHANGE
STAGE 2
F.A.I. 80 TRAFFIC CONTROL
STA. 1941+00 TO STA. 1956+50

SCALE: 1" = 50'
DATE: JANUARY, 2005

DRAWN BY: KDM
CHECKED BY: MJL