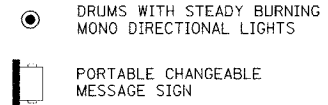
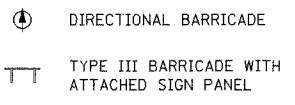
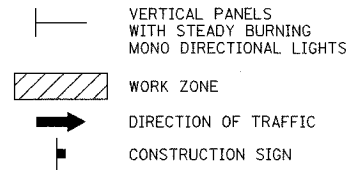


F.A.I. ROUTE	SECTION	COUNTY	TOTAL SHEETS	SHEET NO.
80-55	99-1(K, BY&AC-B)	WILL	497	86
STA. 1972+00		TO STA. 2143+00		
FED. ROAD DIST. NO. 1		ILLINOIS		FED. AID PROJECT
CONTRACT NO. 80906				

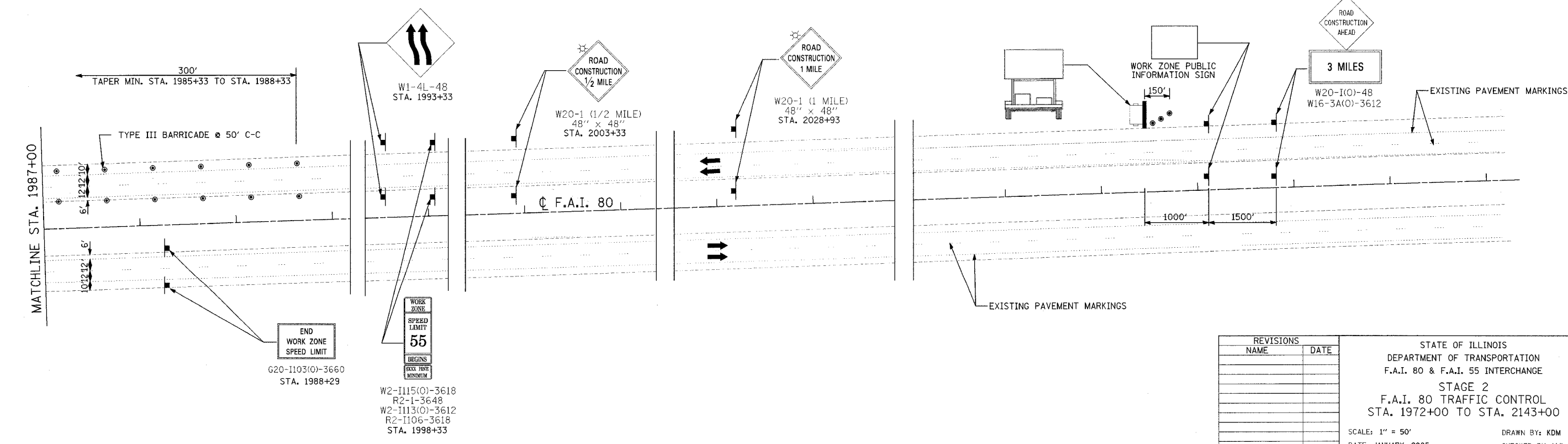
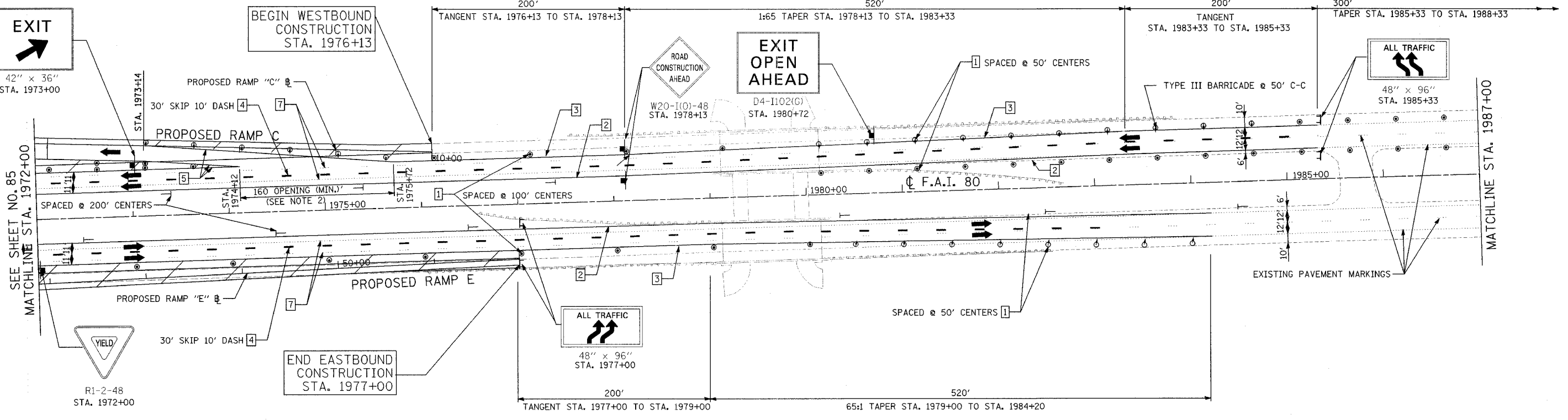
LEGEND

- 1 DRUM WITH STEADY BURNING LIGHT
- 2 PAVEMENT MARKING TAPE, TYPE III - (4 INCH), YELLOW
- 3 PAVEMENT MARKING TAPE, TYPE III - (4 INCH), WHITE
- 4 PAVEMENT MARKING TAPE, TYPE III - (5 INCH), WHITE
- 5 PAVEMENT MARKING TAPE, TYPE III - (8 INCH), WHITE
- 6 PAVEMENT MARKING TAPE, TYPE III - (12 INCH), WHITE
- 7 PAVEMENT MARKING REMOVAL (LINE)



NOTES

1. RAISED PAVEMENT REFLECTOR LENS WHICH CONFLICT WITH TEMPORARY PAVEMENT MARKINGS SHALL BE REMOVED. THIS WORK SHALL BE INCLUDED IN THE COST TO THE CONTRACT UNIT PRICE FOR REPLACEMENT REFLECTORS.
2. SEE STATE STANDARD 701411 FOR APPLICABLE RAMP SIGNING AND BARRICADE PLACEMENT IN ADDITION TO THE TRAFFIC CONTROL ITEMS SHOWN ON THIS SHEET.



REVISIONS	
NAME	DATE

STATE OF ILLINOIS
DEPARTMENT OF TRANSPORTATION
F.A.I. 80 & F.A.I. 55 INTERCHANGE
STAGE 2
F.A.I. 80 TRAFFIC CONTROL
STA. 1972+00 TO STA. 2143+00

SCALE: 1" = 50'
DATE: JANUARY, 2005

DRAWN BY: KDM
CHECKED BY: MJL

DATE: 01/04/2005
FILENAME: m:\proj\28090280-02\design\m\14180\stage 1\2809.mcd-80.dwg:mjl-10.dgn