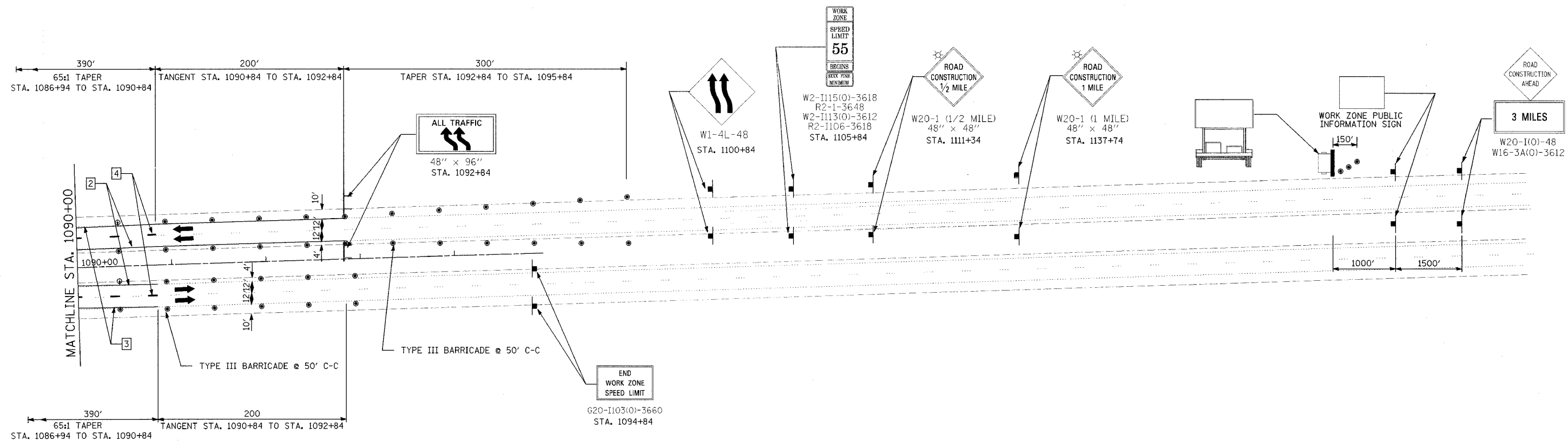
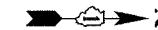


F.A.I. ROUTE	SECTION	COUNTY	TOTAL SHEETS	SHEET NO.
80-55	99-1(K, BY&AC-B)	WILL	497	113
STA. 1090+00		TO STA. 1244+74		
FED. ROAD DIST. NO. 1		ILLINOIS FED. AID PROJECT		
<b>CONTRACT NO. 80906</b>				



**LEGEND**

- 1 DRUM WITH STEADY BURNING LIGHT
- 2 PAVEMENT MARKING TAPE, TYPE III - (4 INCH), YELLOW
- 3 PAVEMENT MARKING TAPE, TYPE III - (4 INCH), WHITE
- 4 PAVEMENT MARKING TAPE, TYPE III - (5 INCH), WHITE
- 5 PAVEMENT MARKING TAPE, TYPE III - (8 INCH), WHITE
- 6 PAVEMENT MARKING TAPE, TYPE III - (12 INCH), WHITE
- 7 PAVEMENT MARKING REMOVAL (LINE)

- VERTICAL PANELS WITH STEADY BURNING MONO DIRECTIONAL LIGHTS
- WORK ZONE
- DIRECTION OF TRAFFIC
- CONSTRUCTION SIGN
- DRUMS WITH STEADY BURNING MONO DIRECTIONAL LIGHTS
- DIRECTIONAL BARRICADE
- TYPE III BARRICADE WITH ATTACHED SIGN PANEL
- PORTABLE CHANGEABLE MESSAGE SIGN

**NOTES**

1. RAISED PAVEMENT REFLECTOR LENS WHICH CONFLICT WITH TEMPORARY PAVEMENT MARKINGS SHALL BE REMOVED. THIS WORK SHALL BE INCLUDED IN THE COST OF THE CONTRACT UNIT PRICE FOR REPLACEMENT REFLECTORS.
2. SEE STATE STANDARD 701411 FOR APPLICABLE RAMP SIGNING AND BARRICADE PLACEMENT IN ADDITION TO THE TRAFFIC CONTROL ITEMS SHOWN ON THIS SHEET.

REVISIONS	
NAME	DATE

STATE OF ILLINOIS  
DEPARTMENT OF TRANSPORTATION  
F.A.I. 80 & F.A.I. 55 INTERCHANGE  
STAGE 3  
F.A.I. 55 TRAFFIC CONTROL  
STA. 1090+00 TO STA. 1244+74

SCALE: 1"=50'

DATE: JANUARY, 2005

DRAWN BY: DLP

CHECKED BY: MJL