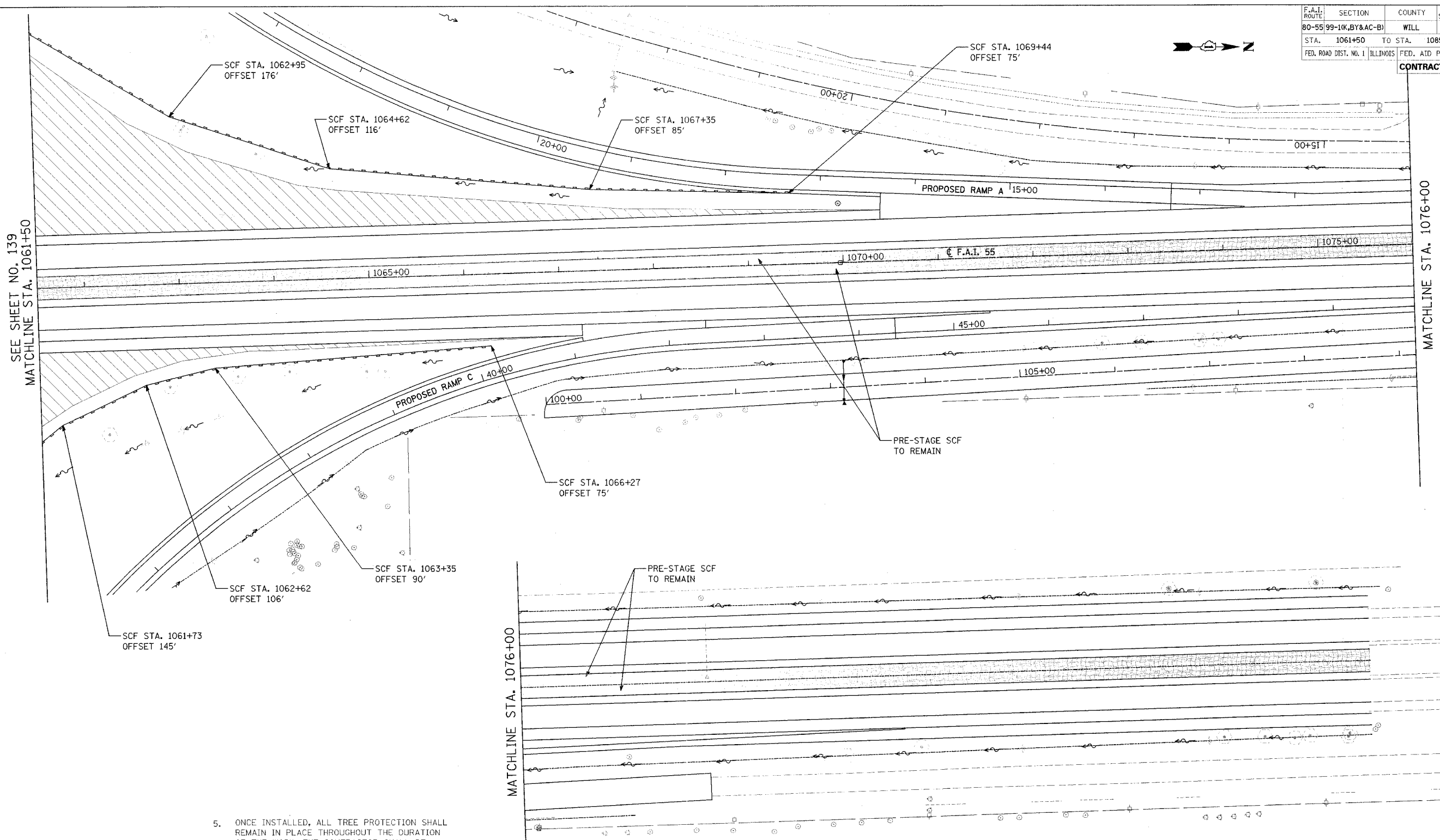


F.A.I. ROUTE	SECTION	COUNTY	TOTAL SHEETS	SHEET NO.
80-55-99-1(K, BY&AC-B)	WILL		497	140
STA. 1061+50 TO STA. 1085+00		FED. AID PROJECT		
FED. ROAD DIST. NO. 1 ILLINOIS		CONTRACT NO. 80906		



NOTES

- FOR PERMANENT DRAINAGE STRUCTURES AND PIPE INFORMATION SEE SHEETS 150 TO 151
- FOR PERMANENT SEEDING INFORMATION SEE SHEETS 191 TO 192
- PER STANDARD 28000001 ALL SEDIMENT BASINS TO BE PLACED AS SHOWN AND REMOVED AT THE END OF THE PROJECT. THE COST WILL BE PAID FOR AS EARTH EXCAVATION FOR EROSION CONTROL.
- AGGREGATE EROSION CONTROL IS NOT REQUIRED FOR SEDIMENT BASINS WHERE THESE DISCHARGE TO STONE RIPRAP.
- ONCE INSTALLED, ALL TREE PROTECTION SHALL REMAIN IN PLACE THROUGHOUT THE DURATION OF THE WORK. THE CONTRACTOR SHALL BE RESPONSIBLE FOR MAINTAINING AND REPLACING ALL TREE PROTECTION MATERIALS DURING CONSTRUCTION.
- ALL INLET PROTECTION DEVICES AND MATERIAL SHALL REMAIN IN PLACE THROUGHOUT CONSTRUCTION, UNLESS THE STRUCTURE IS TO BE REMOVED, WHEREUPON, ALL INLET PROTECTION MEASURES SHALL BE ALSO REMOVED BY THE CONTRACTOR.
- ALL AREAS DESIGNATED FOR TEMPORARY SEEDING WITHIN 30 FEET OF PAVEMENT SHALL INCLUDE EROSION CONTROL BLANKET. ALL OTHER TEMPORARY SEEDING AREAS SHALL INCLUDE MULCH, METHOD 2.

EROSION CONTROL LEGEND

- TEMPORARY DITCH CHECK
- SEDIMENT CONTROL, SILT FENCE (SCF)
- DRAINAGE STRUCTURE INLET FILTER
- PROPOSED FLOW ARROW
- TEMPORARY SEDIMENT BASIN
- EXISTING TEMPORARY EROSION CONTROL SEEDING
- TEMPORARY FENCE
- AGGREGATE DITCH
- TREE PROTECTION
- EXISTING FLOW ARROW
- TEMPORARY EROSION CONTROL SEEDING
- SEEDING CLASS 7 (TEMPORARY)
- TEMPORARY RIP-RAP
- TEMPORARY PAVEMENT
- PERMANENT SEEDING (SEE NOTE 2)

REVISIONS	
NAME	DATE

STATE OF ILLINOIS
DEPARTMENT OF TRANSPORTATION
F.A.I. 80 & F.A.I. 55 INTERCHANGE
STAGE 3
F.A.I. 55 EROSION CONTROL
STA. 1061+50 TO STA. 1085+00

SCALE: 1"=50'
DATE: JANUARY, 2005

DRAWN BY: DMW
CHECKED BY: MJL

DATE: 01/03/2005
FILENAME: n:\proj\28000000\02\design\revision\16155\stage3\102800_erosion_55_stage11_22.dgn