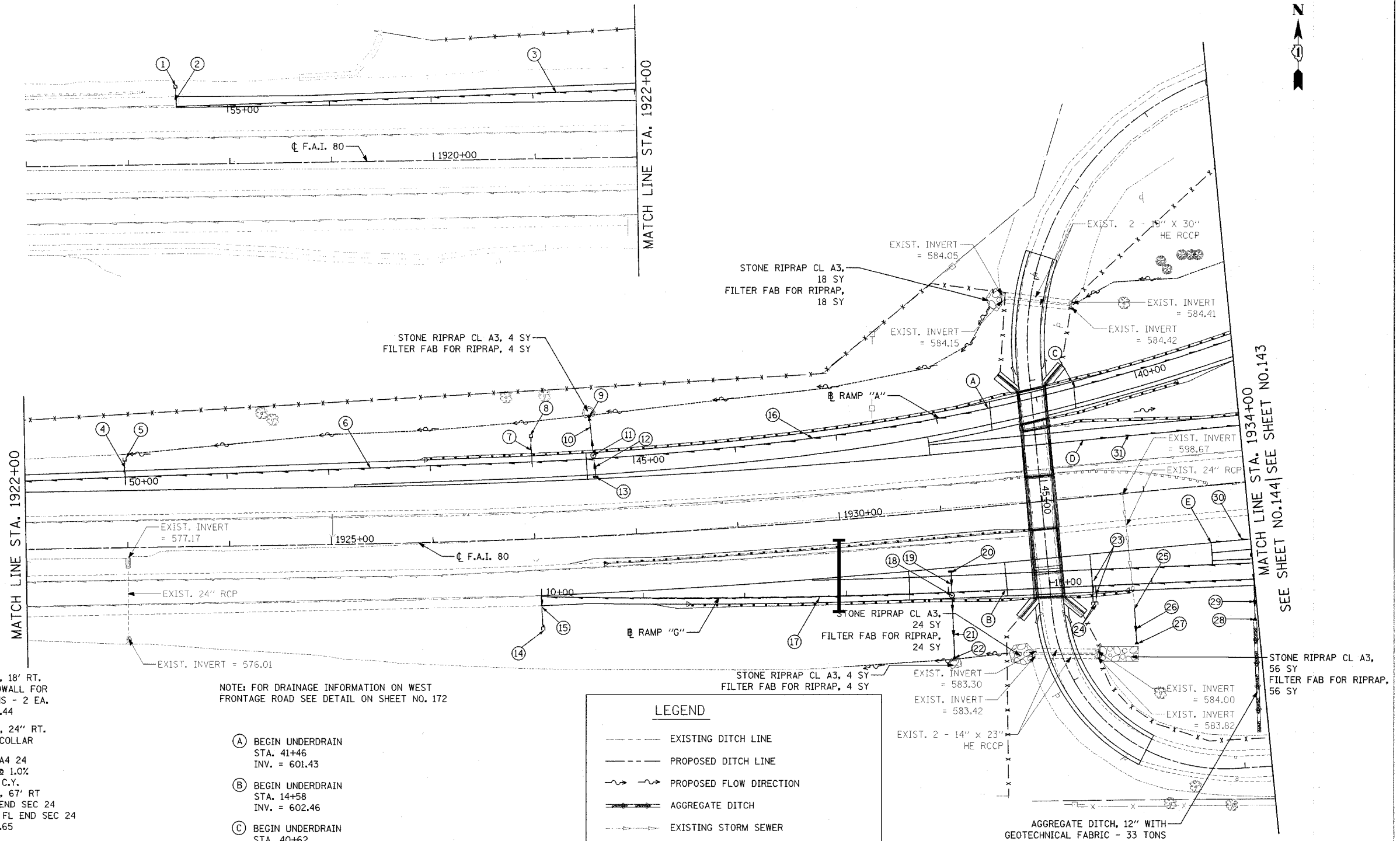


F.A.I. ROUTE	SECTION	COUNTY	TOTAL SHEETS	SHEET NO.
80-55-99-1(K,BY&AC-B)	WILL		497	142
STA. 1916+00	TO STA. 1934+00			
FED. ROAD DIST. NO. 1	ILLINOIS	FED. AID PROJECT		
<b>CONTRACT NO. 80906</b>				

- ① STA. 55+50, 21' RT. CONC. HEADWALL FOR PIPE DRAINS - 1 EA. INV. = 567.41
- ② PIPE UNDERDRAINS 6" (SPECIAL) 18 L.F.
- ③ PIPE UNDERDRAINS 6" 550 L.F.
- ④ PIPE UNDERDRAINS 6" (SPECIAL) 16 L.F.
- ⑤ STA. 50+00, 91' RT. CONC. HEADWALL FOR PIPE DRAINS - 1 EA. INV. = 582.56
- ⑥ PIPE UNDERDRAINS 6" 400 L.F.
- ⑦ PIPE UNDERDRAINS 6" (SPECIAL) 24 L.F.
- ⑧ STA. 46+00, 27' RT. CONC. HEADWALL FOR PIPE DRAINS - 1 EA. INV. = 591.80
- ⑨ STA. 45+41, 42' RT METAL END SEC 12 INV. = 581.83
- ⑩ PIPE DRAINS BCCS 12 (SEE SHEET 166) 31' @ 40% T.B.F. = 2 C.Y.
- ⑪ STA. 45+39, 3' RT MH, TA, 4' DIA., TIF CL T/F= 596.31 INV. = 592.19 INV. = 592.09
- ⑫ SS 2 RCP CL 3 12 18' - 12" @ 1.0% T.B.F. = 3 C.Y.
- ⑬ STA. 45+38, 18' LT CB, TA, 4' DIA., TY 20 F&G T/F = 596.87 INV. = 592.37
- ⑭ STA. 10+00, 20' RT. CONC. HEADWALL FOR PIPE DRAINS - 1 EA. INV. = 590.95
- ⑮ PIPE UNDERDRAINS 6" (SPECIAL) 30 L.F.
- ⑯ PIPE UNDERDRAINS 6" 454 L.F.
- ⑰ PIPE UNDERDRAINS 6" 458 L.F.
- ⑱ STA. 14+03, 3' RT MH, TA, 4' DIA., TIF CL T/F= 603.99 INV. = 598.97 INV. = 598.87
- ⑲ SS 2 RCP CL 3 12 21' - 12" @ 1.0% T.B.F. = 4 C.Y.
- ⑳ STA. 14+04, 20' LT CB, TA, 4' DIA., TY 20 F&G T/F = 603.68 INV. = 599.18
- ㉑ PIPE DRAINS BCCS 12 (SEE SHEET 166 ) 60' @ 26% T.B.F. = 5 C.Y.
- ㉒ STA. 14+03, 67' RT MET END SEC 12 INV. = 583.00
- ㉓ PIPE UNDERDRAINS 6" (SPECIAL) 32 L.F., 16 L.F.

- ㉔ STA. 15+43, 18' RT. CONC. HEADWALL FOR PIPE DRAINS - 2 EA. INV. = 602.44
  - ㉕ STA. 15+82, 24" RT. CONCRETE COLLAR
  - ㉖ P CUL CL A4 24 31' - 24" @ 1.0% T.B.F. = 0 C.Y.
  - ㉗ STA. 15+82, 67' RT PRC FLAR END SEC 24 GRATING-C FL END SEC 24 INV. = 588.65
  - ㉘ STA. 17+00, 45' RT PRC FLAR END SEC 12 INV. = 600.80
  - ㉙ P CUL CL A2 12 59' - 12" @ 1.00% T.B.F. = 10 C.Y.
  - ㉚ PIPE UNDERDRAINS 6" 39 L.F.
  - ㉛ PIPE UNDERDRAINS 6" 247 L.F.
- NOTE: FOR DRAINAGE INFORMATION ON WEST FRONTAGE ROAD SEE DETAIL ON SHEET NO. 172
- (A) BEGIN UNDERDRAIN STA. 41+46 INV. = 601.43
  - (B) BEGIN UNDERDRAIN STA. 14+58 INV. = 602.46
  - (C) BEGIN UNDERDRAIN STA. 40+62 INV. = 603.04
  - (D) BEGIN UNDERDRAIN STA. 1932+53, 56' LT INV. = 603.10
  - (E) BEGIN UNDERDRAIN STA. 1933+61, 56' RT INV. = 604.19



LEGEND	
	EXISTING DITCH LINE
	PROPOSED DITCH LINE
	PROPOSED FLOW DIRECTION
	AGGREGATE DITCH
	EXISTING STORM SEWER
	EXISTING PIPE CULVERT
	PROPOSED STORM SEWER OR PIPE CULVERT
	EXISTING PIPE UNDERDRAIN
	PROPOSED PIPE UNDERDRAIN

REVISIONS	
NAME	DATE

STATE OF ILLINOIS  
DEPARTMENT OF TRANSPORTATION  
F.A.I. 80 & F.A.I. 55 INTERCHANGE

**PROPOSED DRAINAGE PLAN**  
F.A.I. 80, RAMPS "A" & "G"

SCALE: 1" = 50'  
DATE: JANUARY, 2005

DRAWN BY: KMS  
CHECKED BY: MJL

DATE: 01/03/2005  
FILENAME: I:\proj\2890\8650\02\design\drainage\2890-drainage-01.dgn